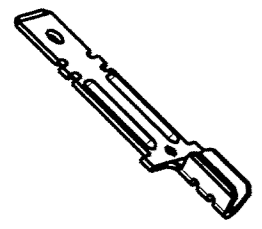
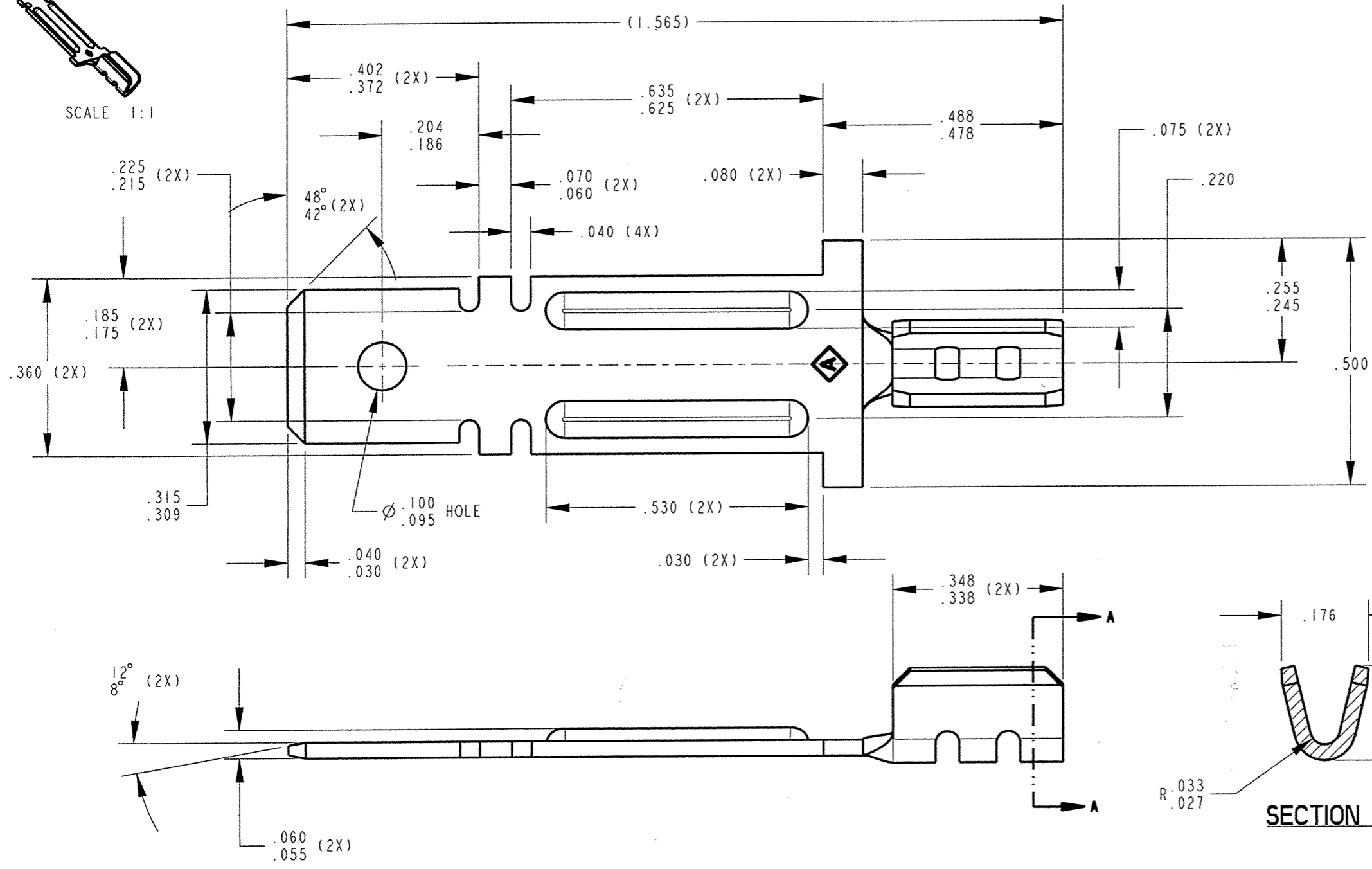


CUSTOMER DRAWING

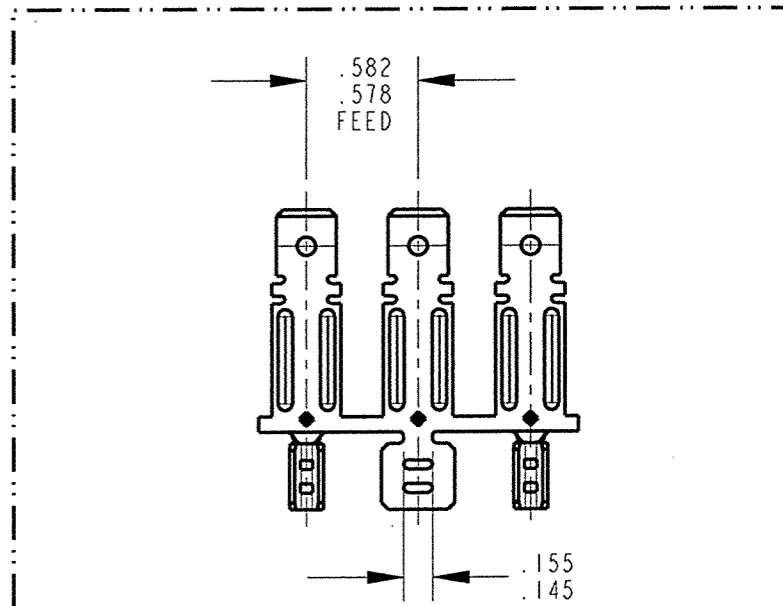
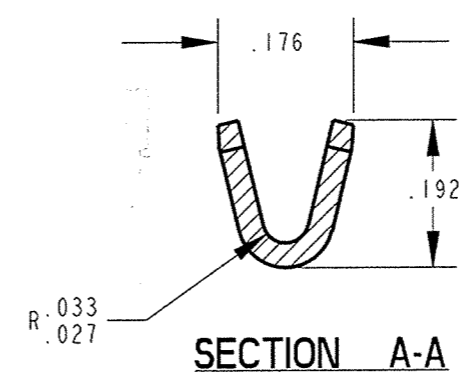
P/N: 3800M 111J REV B



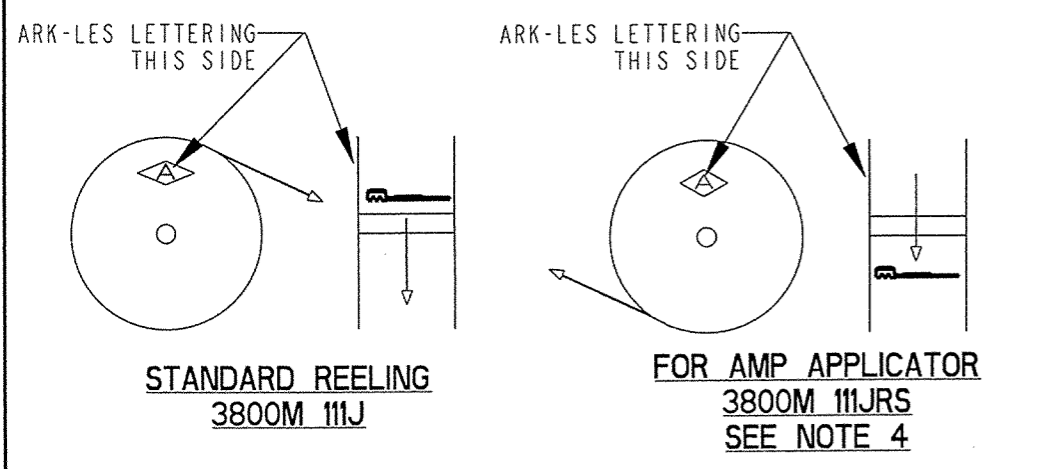
SCALE 1:1



- NOTES:
- TAB MUST BE FLAT AND FREE OF BURRS OR RAISED PLATEAUS, EXCEPT THAT THERE MAY BE IN AN AREA .050 SURROUNDING THE DETENT HOLE, A RAISED PLATEAU OVER THE STOCK THICKNESS OF .001 PER SIDE.
 - TERMINAL TO MATE WITH .312 FEMALE TERMINAL.
 - WIRE RANGE: .0253-.064 DIA. (640-4,096 CMA).
 - FOR REELING USED IN AMP APPLICATOR ADD SUFFIX "RS" TO PART NUMBER (i.e. 3800M 111JRS).



ARK-LES UNCONTROLLED



| | | | | | |
|-------------|------------------------|-----------------------------|---------|----------|---------------------------------------|
| PRINT DIST. | PROD. REL. | S0000065 | 5/14/04 | CHK'D | TOLERANCES UNLESS OTHERWISE SPECIFIED |
| DEPT # | QUOTE REL. | | | APP. | DECIMALS ±.010 |
| ENG I | DRAWN BY | D.O'NEILL | 9/28/05 | 10-21-05 | METRIC ±0.25mm |
| SALES | SUPERSEDES DWG. DATED: | | | | ANGLES ±1° |
| STO X | SCALE 4:1 | DO NOT SCALE PRINT | | | 3RD ANGLE PROJECTION |
| RAL | MATERIAL: | .032 ±.001 THICK C.R. STEEL | | | DWG SIZE B |
| JZ | FINISH: | PRE-NICKEL PLATE | | | |
| CHINA | | | | | |
| REV. B | DESCRIPTION | CUST/DRW REL.ECR# S000118 | DATE | 9/28/05 | DR. DON |

Ark-Les CORPORATION STOUGHTON, MA

ORIGINAL IF RED

PART CUSTOMER DRAWING
NAME TERMINAL, MALE HEATER

CAD#: 3800M_111J-REVB_CUST

P/N: 3800M 111J REV B