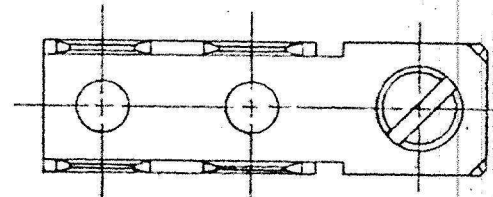


DEPT.	
1	7
2	1
3	4
4	
5	
6	
7	
8	
9	
10	
11	
12	5

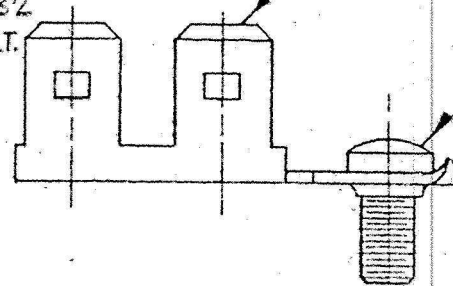
SCREW & TERMINAL SUB ASSEMBLY

386 10 329



NOTE:

TO ACCEPT A .1250 X .032 FEMALE QUICK-CONNECT.



3000M703-1
TIN PLATE (B)

2920-8C
#6-32 X .250
TIN PLATE

ARK-LES UNCONTROLLED

ORIGINAL IN RED

				RELEASED FOR PRODUCTION			TOLERANCES UNLESS OTHERWISE SPECIFIED:		
				RELEASED FOR QUOTATION	97542	3-15-74	P.C.	DECIMALS ±.010	ANGLES ±1°
C	REVISED PER ECR 7823	2-2-74	PT	NEW DRAWING SUPERSEDES				DO NOT SCALE DRAWING	
B	3000M703-1 WAS 3000M702B ECR 306	7-26-85	R.T.	DRAWN BY	P.C.				
A	NO. WAS 386 10 329 PER ECR 306	11-13-74	R.T.	CHECKED BY					
	REVISIONS	DATE	APP.	APPROVED BY	FINISH				

DATE OF DRAWING 3-15-74

SCALE 2 To 1

DATE OF PRINT