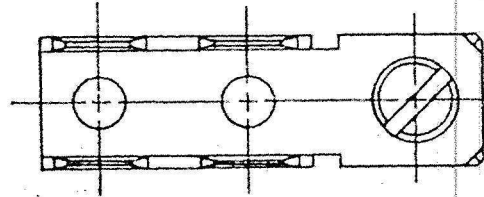


DEPT.	
1	2
2	1
3	
4	
5	2
6	
7	
8	
9	
10	
11	
12	5

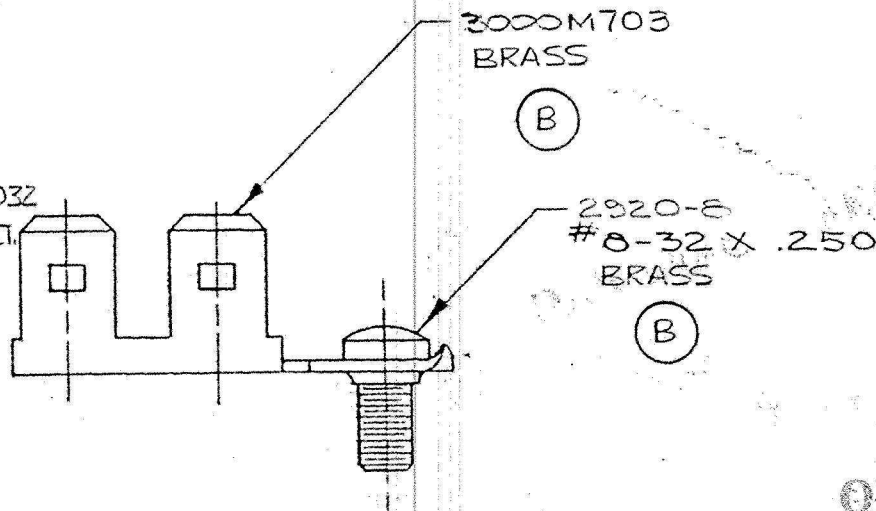
SCREW & TERMINAL SUB ASSEMBLY



NOTE:

1. TO BE ASSEMBLED BY BODINE MACHINE.

(B) 3. TO ACCEPT A .250 X .032 FEMALE QUICK-CONNECT.



ARK-LES UNCONTROLLED

ORIGINAL IN RED

			RELEASED FOR PRODUCTION	75410	1-22-74	P.C.	TOLERANCES UNLESS OTHERWISE SPECIFIED:	
			RELEASED FOR QUOTATION				DECIMALS ±.010	ANGLES ±1°
			NEW DRAWING SUPERSEDES				DO NOT SCALE DRAWING	
E	REVISED PER ECR 7829	2-6-90	R.P.P.	DRAWN BY	P.C.	MATERIAL	H	
A	NO. WAS 38610326 PER ECR 306	11-13-74	R.T.	CHECKED BY	AW			
	REVISIONS	DATE	APP.	APPROVED BY	AW	FINISH	H	
DATE OF DRAWING			1-22-74			SCALE		2 To 1
						DATE OF PRINT		