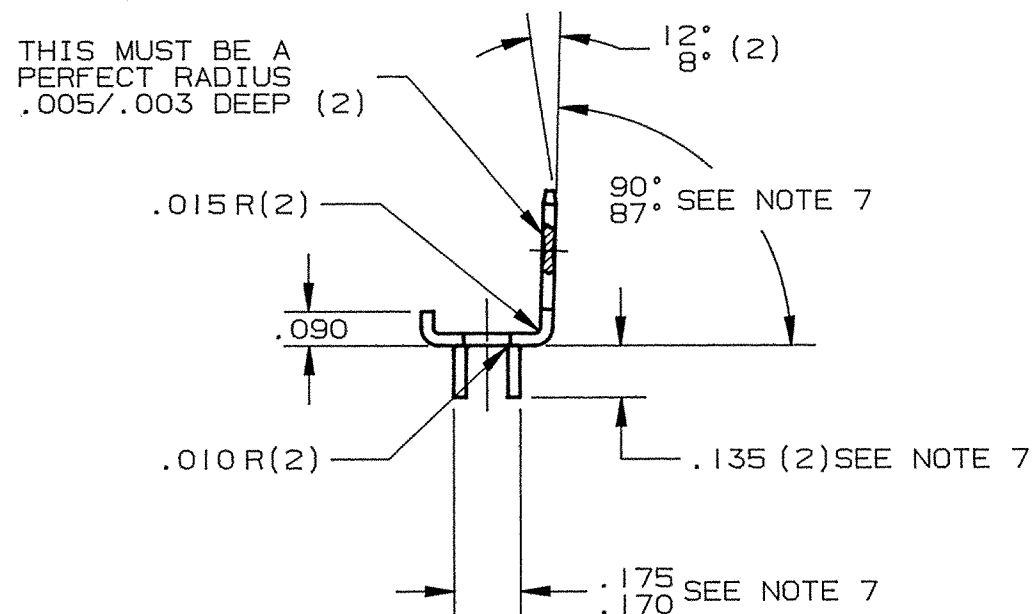
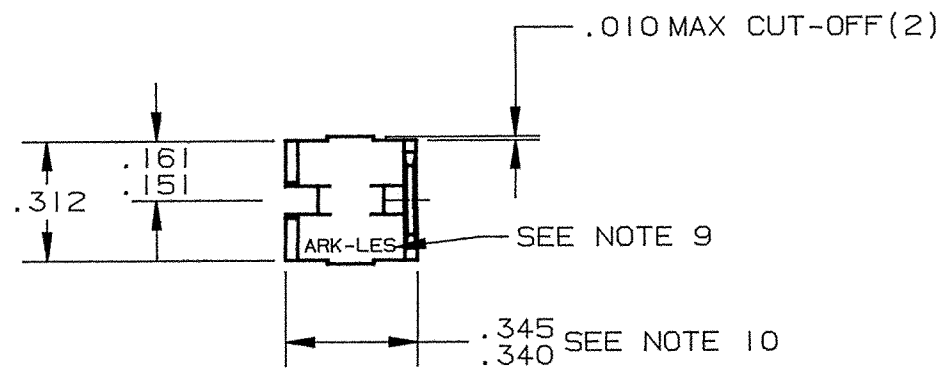


DEPT	1
1	1
2	
3	
4	1
5	
6	
7	
8	
9	
10	
11	
12	7
NC	
JZ	

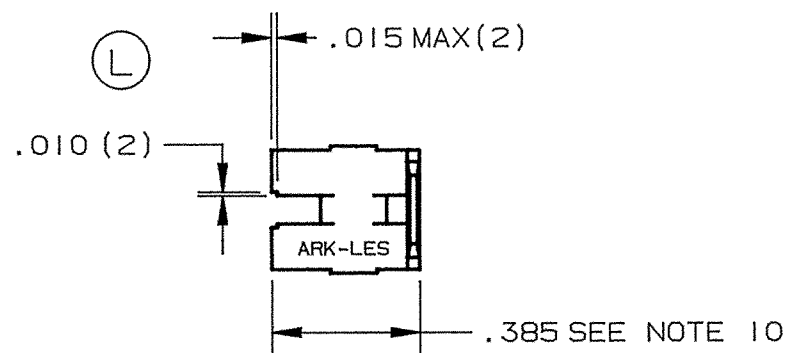
PART NAME: MALE STAKE-ON TERMINAL

PART NO: 3000M727A/

PART NO.	TYPE	MATERIAL	FINISH
3000M727A	1	.032±.001 THK BRASS C26000, 1/2 HARD R30T 56.5-68.0 PRETINNED PCS 1007	SEE MATERIAL
3000M727AB	1	.032±.001 THK BRASS C26000, 1/2 HARD R30T 56.5-68.0	NONE
3000M727AD	1		POST-TIN PCS 1002
3000M727A-2	2	.032±.001 THK BRASS C26000, 1/2 HARD R30T 56.5-68.0 PRETINNED PCS 1007	SEE MATERIAL
3000M727AB-2	2	.032±.001 THK BRASS C26000, 1/2 HARD R30T 56.5-68.0	NONE
3000M727AD-2	2		POST-TIN PCS 1002

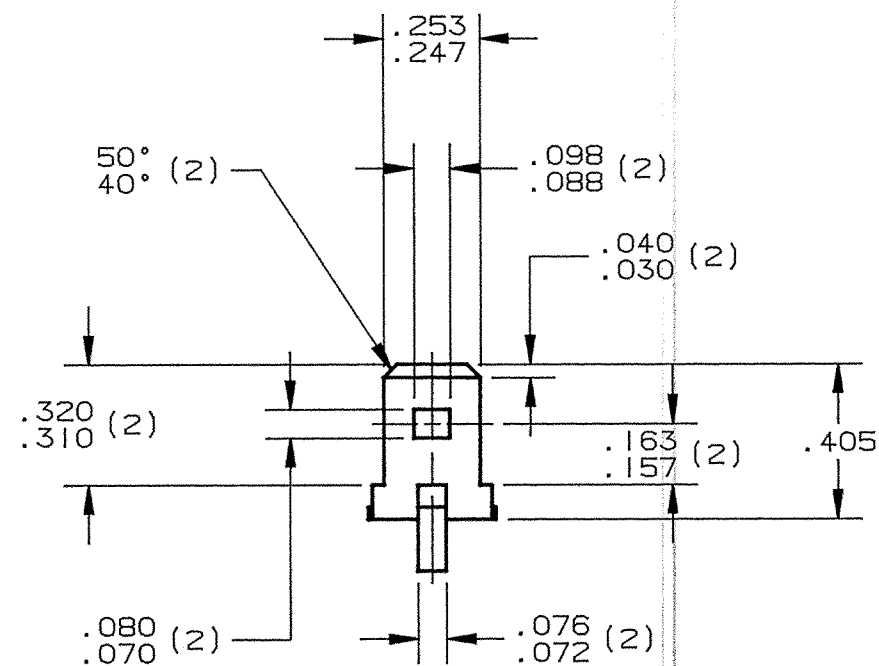
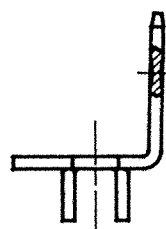


TYPE 1

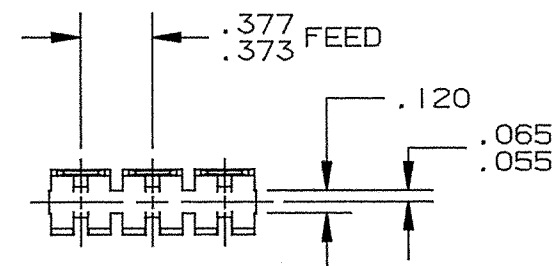


TYPE 2

SAME AS TYPE 1
EXCEPT AS SHOWN



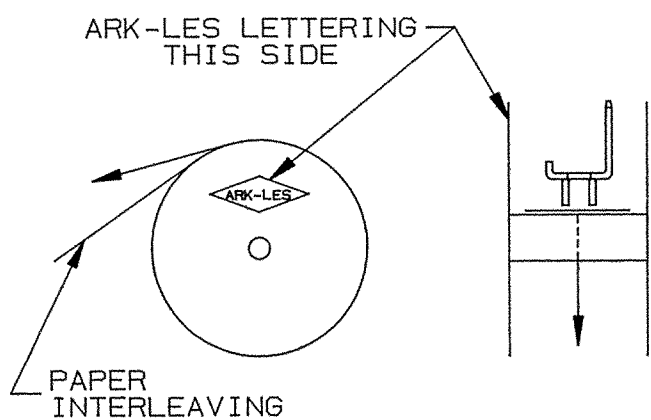
- NOTES:
1. TO MATE WITH STANDARD .250 FEMALE QUICK-CONNECT.
 2. BOARD THICKNESS RANGE: .070 - .093.
 3. ALL PORTIONS OF TAB SHOWN SHALL BE FLAT AND FREE OF BURRS OR RAISED PLATEAUS, EXCEPT THAT THERE MAY BE, IN AN AREA, .050 SURROUNDING THE DETENT, A RAISED PLATEAU OVER THE STOCK THICKNESS OF .001 PER SIDE.
 4. DETENT SHALL BE LOCATED WITHIN .005 OF THE TAB CENTERLINE.
 5. MALE TAB MUST CONFORM TO NEMA DC2-19XX.
 6. FOR LOOSE PIECE PARTS ADD SUFFIX "-1" TO PART NUMBER (i.e. 3000M727A-1).
 7. DIE SHOULD BE DESIGNED SO THAT THESE DIMENSIONS CAN BE CHANGED AT A LATER DATE.
 8. ALL CORNERS SHOWN SHARP MAY HAVE .010 MAXIMUM RADIUS.
 9. "ARK-LES" TO BE DIE STAMPED APPROXIMATELY AS SHOWN.
 10. TO BE MEASURED AT BEND.



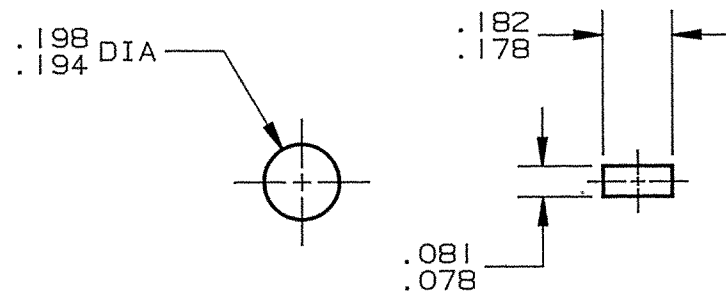
FABRICATED TERMINAL STRIP

SCALE 1:1

ARK-LES
UNCONTROLLED



REELING DIAGRAM



RECOMMENDED MOUNTING HOLES

			PROD. REL.	BMM1804	11/3/76	WC	TOLERANCES UNLESS OTHERWISE SPECIFIED:	
			QUOTE REL.	BM 585	10/15/75	FA	DECIMALS ±.010	METRIC ±0.25mm
			DR:	B J CARUTHERS	11/11/94		MATERIAL:	SEE TABLE
			CHK'D:	R.W.T.	1-16-95		FINISH:	SEE TABLE
			APP:	COR	1-20-95		PART NO:	3000M727A/
L	REVISED & REDRAWN PER ECR #10357	11/11/94	BJC	SUPERCEDES DWG. DATED:	2/25/88			
REV.	DESCRIPTION	DATE	DR.	SCALE: 2:1	CAD NO: CTP0015			

ORIGINAL