

DEPT	
1	1
2	
3	
4	1
5	
6	
7	
8	
9	
10	
11	
12	7
NC	
JZ	

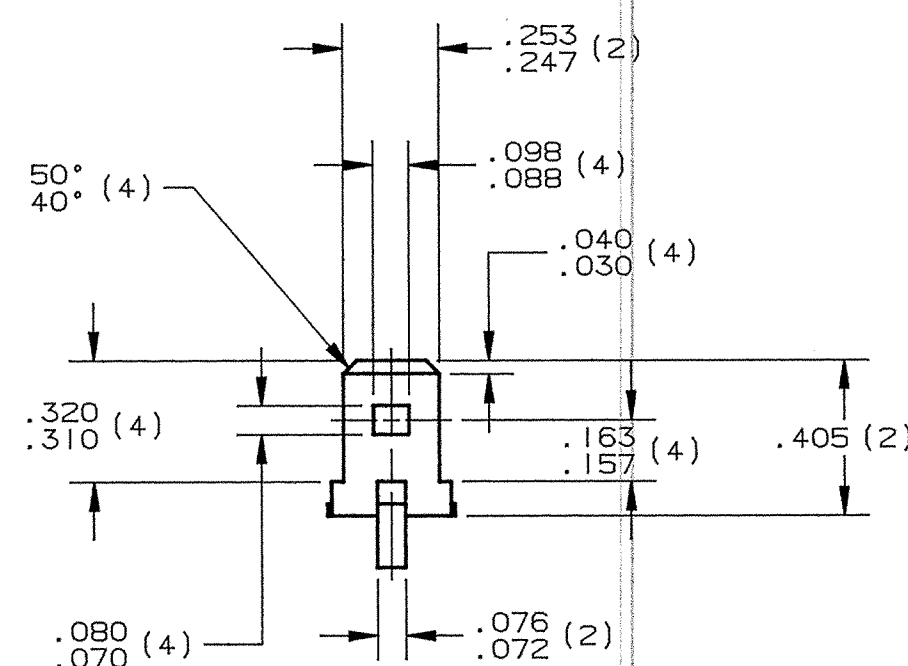
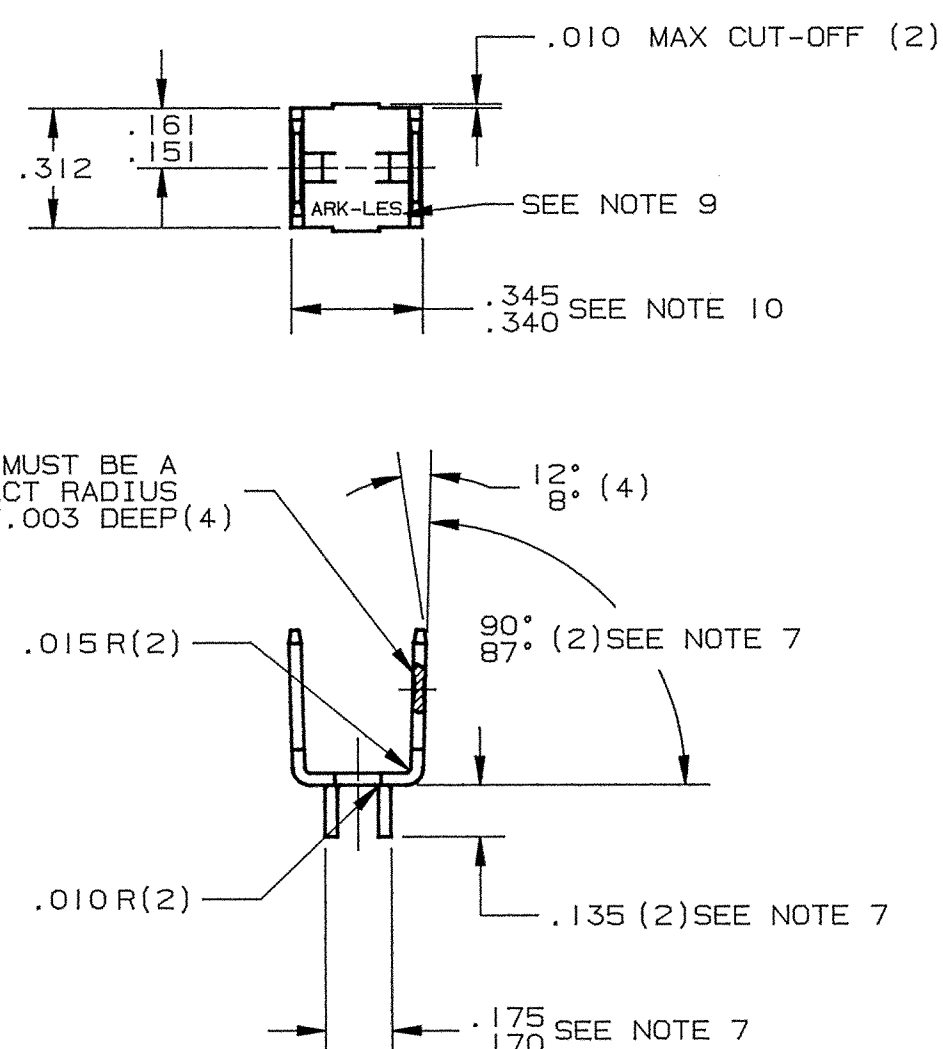
PART NAME:

MALE STAKE-ON TERMINAL

PART NO:

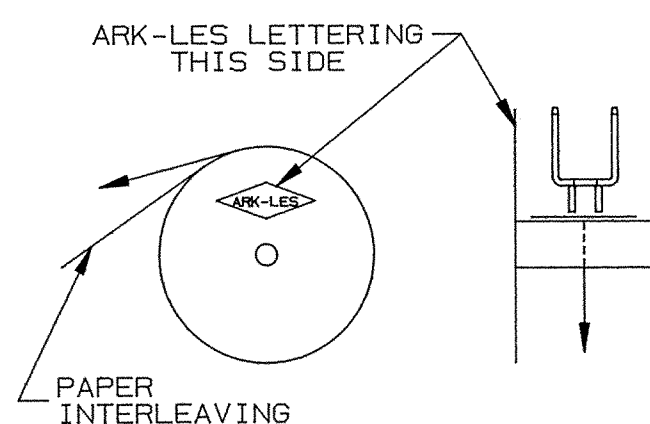
3000M726A/

PART NO.	MATERIAL	FINISH
3000M726A	.032±.001 THK BRASS C26000, 1/2 HARD R30T 56.5-68.0	TIN PLATE PCS 1002
3000M726AB		NONE
3000M726ADH		HOT TIN/LEAD PCS 1003

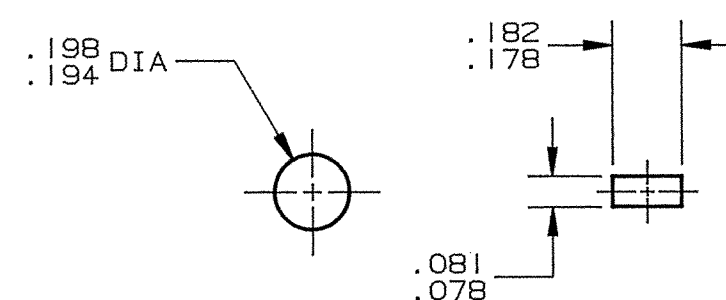


NOTES:

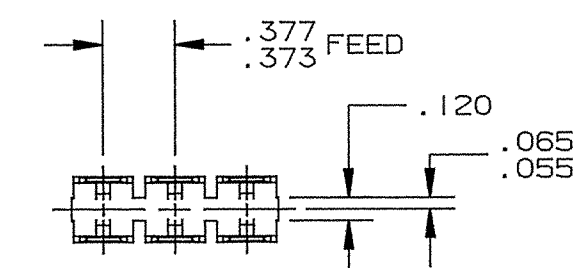
- NOTES:
1. TO MATE WITH STANDARD .250 FEMALE QUICK-CONNECT.
  2. BOARD THICKNESS RANGE: .070 - .093.
  3. ALL PORTIONS OF TAB SHOWN SHALL BE FLAT AND FREE OF BURRS OR RAISED PLATEAUS, EXCEPT THAT THERE MAY BE, IN AN AREA, .050 SURROUNDING THE DETENT, A RAISED PLATEAU OVER THE STOCK THICKNESS OF .001 PER SIDE.
  4. DETENT SHALL BE LOCATED WITHIN .005 OF THE TAB CENTERLINE.
  5. MALE TAB MUST CONFORM TO NEMA DC2-19XX.
  6. FOR LOOSE PIECE PARTS ADD SUFFIX "-1" TO PART NUMBER (i.e., 3000M726A-1).
  7. DIE SHOULD BE DESIGNED SO THAT THESE DIMENSIONS CAN BE CHANGED AT A LATER DATE.
  8. ALL CORNERS SHOWN SHARP MAY HAVE .010 MAXIMUM RADIUS.
  9. "ARK-LES" TO BE DIE STAMPED APPROXIMATELY AS SHOWN.
  10. TO BE MEASURED AT BEND.



REELING DIAGRAM



## RECOMMENDED MOUNTING HOLES



FABRICATED TERMINAL STRIP

SCALE 1 : 1

*ARK-LES*  
*UNCONTROLLED*

					PROD. REL.	BMM1804	11/3/76	WC	TOLERANCES UNLESS OTHERWISE SPECIFIED:		
					QUOTE REL.	BM 585	10/15/75	FA	DECIMALS ±.010	METRIC ±0.25mm	ANGLES ±1°
					DR:	B J CARUTHERS	11/11/94		MATERIAL: SEE TABLE		
					CHK'D:	R.W.T.	1-16-95				
					APP:	COR	1-20-95		FINISH: SEE TABLE		
M	REVISED & REDRAWN PER ECR #10357			11/11/94	BJC	SUPERCEDES DWG. DATED: 5/12/83			PART NO: 3000M726A/		
REV.	DESCRIPTION			DATE	DR.	SCALE: 2:1	CAD NO: CTP0016				

ORIGINAL