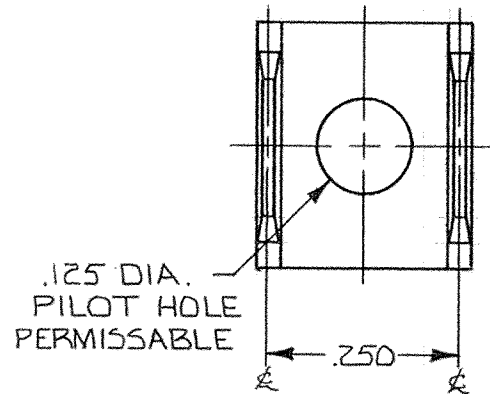


ARK-LES CORPORATION

WATERTOWN, MASS.

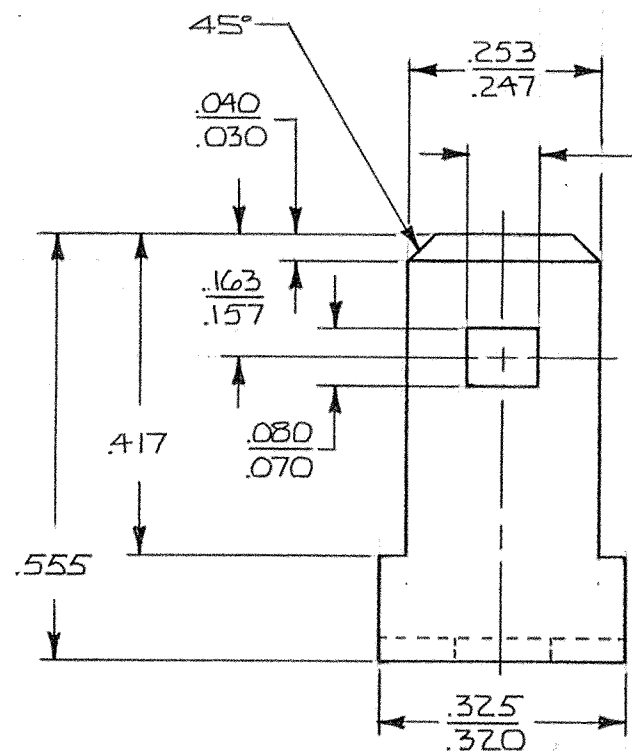
DEPT		PART NAME: <u>TERMINAL-MALE-2 WAY</u>	PART NO: <u>3000M60Z/</u>
1			
2			
3			
4			
5			
6			
7			
8			
9			
10			
11			
12	6		
ME			

PART NO.	MATERIAL	FINISH
3000M60Z	.03Z±.001THK. H.H. BRASS CAZ60 R30T 56.5-68	NONE
3000M60ZA	SAME AS 3000M60Z	ELECTRO-TIN PCS 100Z



10°±2° COIN

THIS MUST BE A PERFECT RADIUS
.003-.005 DEEP
BOTH SIDES.



NOTES
1. ALL PORTIONS OF TABS SHOWN SHALL BE FLAT AND FREE FROM BURRS OR RAISED PLATEAUS.
2. DETENT SHALL BE LOCATED WITHIN .005

ORIGINAL IF RED

ARK-LES UNCONTROLLED

			PROD. REL. 7705	8-9-65	BA	TOLERANCES UNLESS OTHERWISE SPECIFIED :		
			QUOTE REL. 7705	8-9-65	BA	DECIMALS ± .010	METRIC ± 0.25 mm	ANGLES ± 1°
			DR. : A. PAPIA	8-20-86		MATERIAL: SEE TABLE		
			CHK'D.: R.W.T.			FINISH: SEE TABLE		
G	REVISED & REDRAWN: TABLE &	8-20-86	APP. : R.W.T.	8-28-86		PART NO: 3000M60Z/		
	3000M60ZA ADDED ECR 5831		SUPERSEDES DWG. DATED: 8-9-65					
REV.	DESCRIPTION	DATE	DR.	SCALE: 4 TO 1	F.M.F.			