

# Notes:

1. Allow clearance for finger squeeze access from the two sides shown.

2. No tracks or vias in the shaded "KEEP OUT" AREA.

3. No other track or signal within .02" of any contact pad.

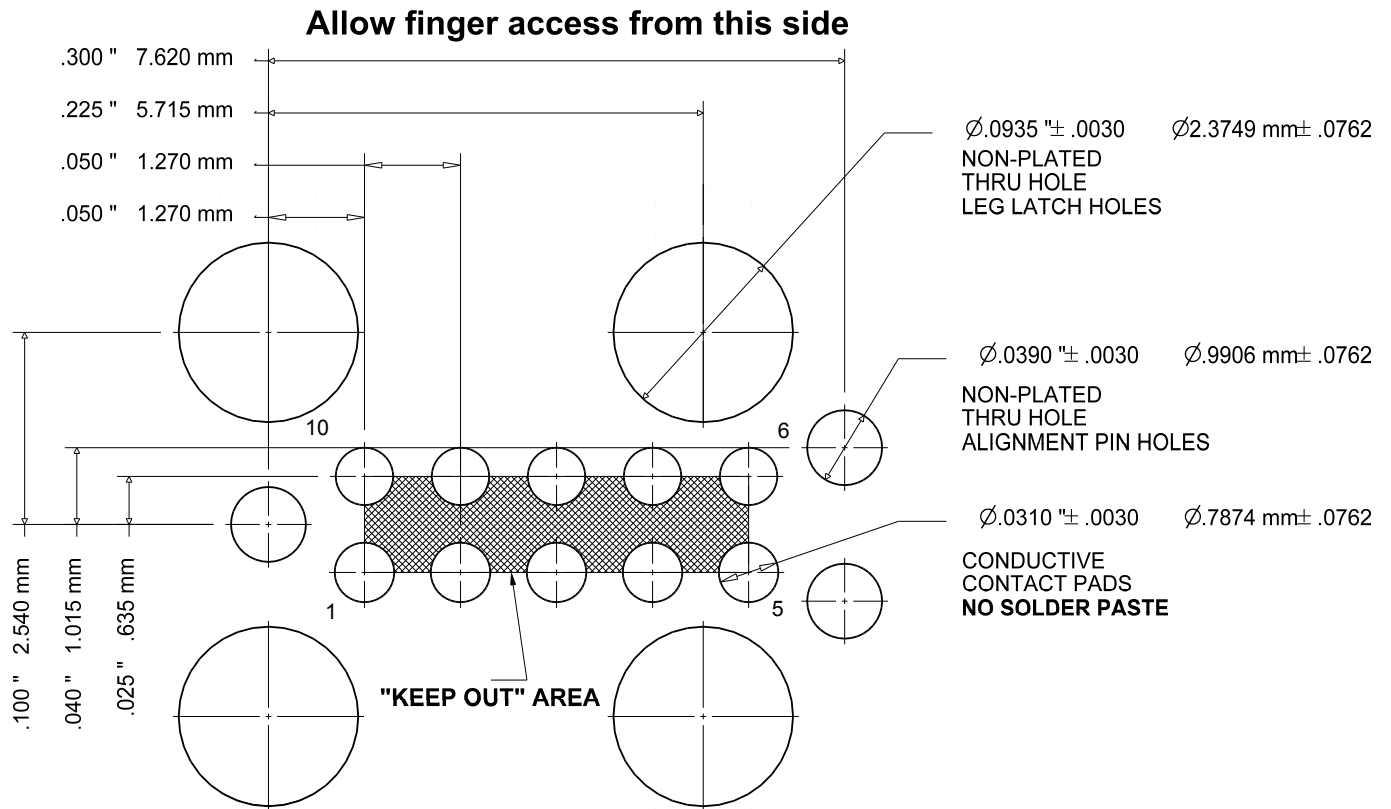
4. Do not allow solder paste on the contact pads. It is essential to eliminate any hole in the solder paste-mask (solder stencil) layer. If this is not possible make the contact pads thru-hole with a finished hole size of .008" or less.

5. Leg and alignment holes may be plated and used as vias but ensure minimum finished hole size meets specified tolerances.

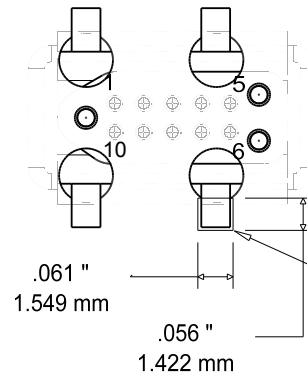
6. To prevent purchasing confusion, please specify DNL in your BOM.

## FOOTPRINT FOR TC2050-IDC PLUG-OF-NAILS<sup>(TM)</sup> CABLE

ZONE	A	TC2050-IDC-FP	12/2/10	MS
------	---	---------------	---------	----



PCB BOTTOM VIEW



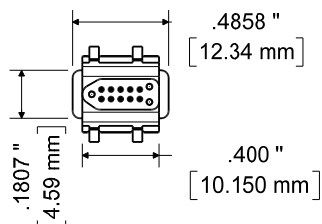
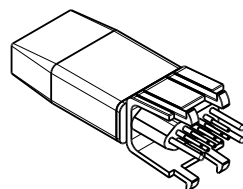
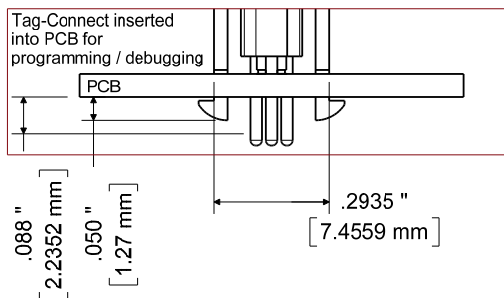
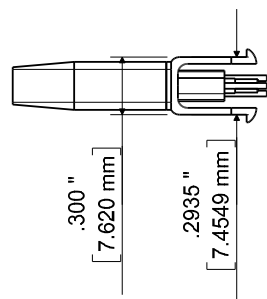
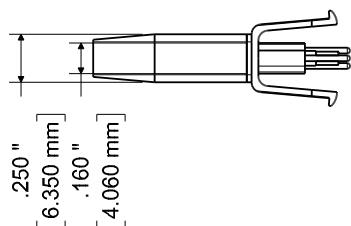
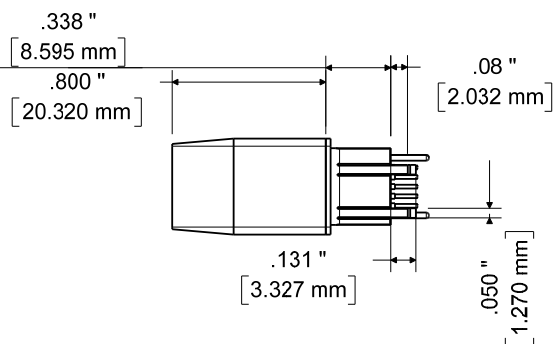
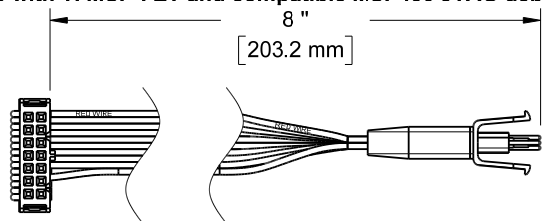
Allow finger access from this side

SIZE A	FSCM NO.	DWG NO.	FOOTPRINT FOR TC2050-IDC-FP	REV A
SCALE 7:1	www.TAG-CONNECT.com	SHEET 1 of 3		

**NOTE:**

Dimensions subject to change

For use with TI MSP-FET and compatible MSP430 JTAG debuggers

**TC2050-IDC-430 PLUG-OFF-NAILS™ CABLE**

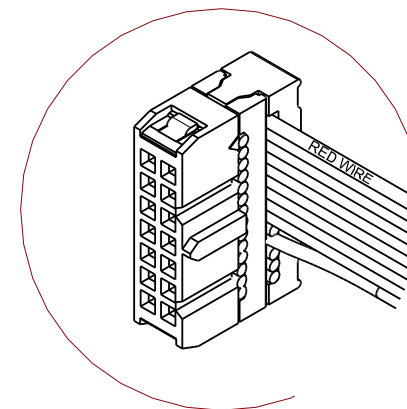
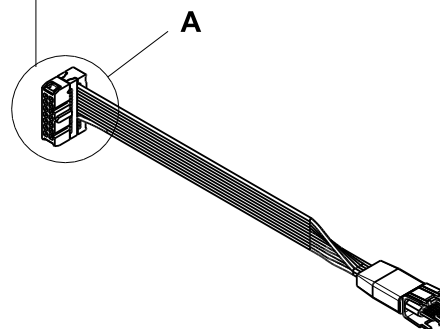
ZONE

A

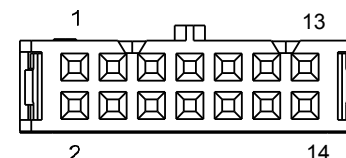
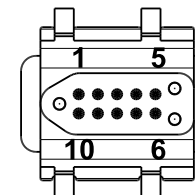
**TC2050-IDC-430**

11/26/10

MS



Detail A

**END VIEW  
2x7 0.1" PITCH  
IDC CONNECTOR****END VIEW  
10 PIN  
TAG-CONNECT**

14 pin IDC	10 pin TAG
1	1
2	2
3	3
4	4
5	5

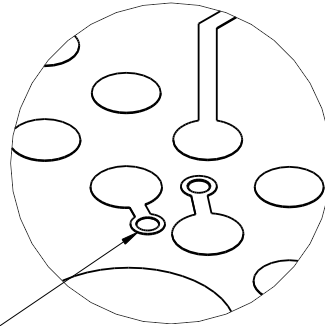
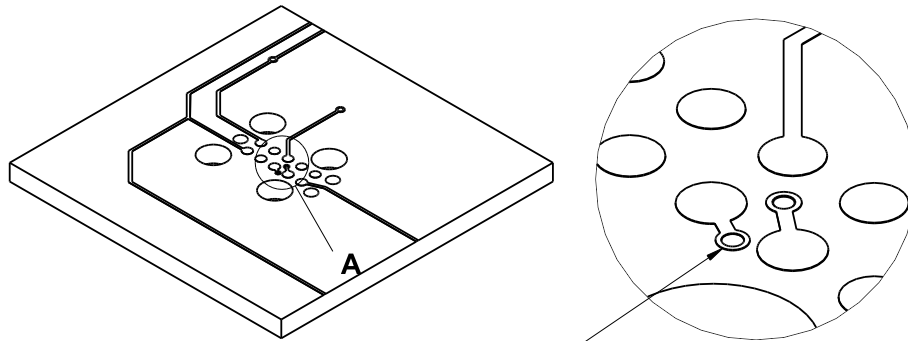
14 pin IDC	10 pin TAG
6	6
7	7
8	8
9	9
11	10

**NOTE:**

Pins 10,12,13 &amp; 14 are not used

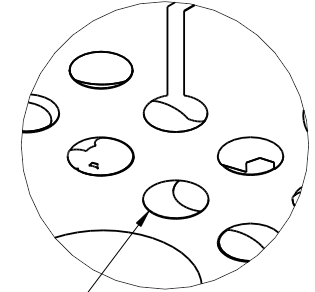
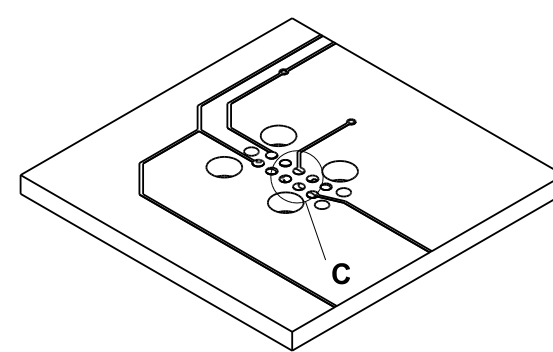
SIZE <b>A</b>	FSCM NO.	DWG NO. <b>TC2050-IDC-430</b>	REV <b>A</b>
SCALE	www.TAG-CONNECT.com		SHEET 2 Of 3

# Layout Problems to Avoid



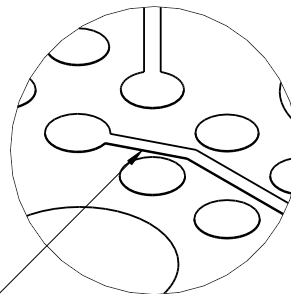
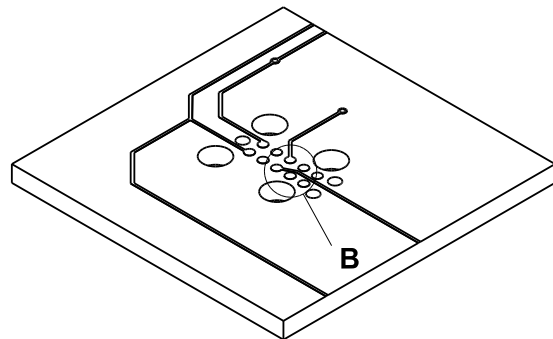
Detail A

Vias between  
contact pads



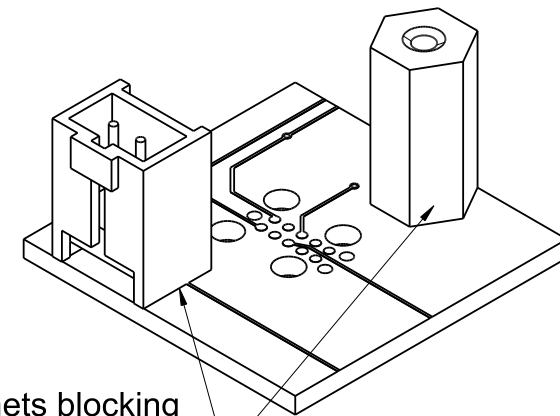
Detail C

Do not deposit solder paste on  
contact pads. View Solder Paste  
Mask (Solder Stencil) layer in  
pad-stack and eliminate any hole.



Detail B

Traces less than .02"  
away from contact pad  
or in "KEEP OUT" area



Large componets blocking  
finger access to the Tag-  
Connect leg clips