

TECHNICAL DATA  
DATA SHEET 5054, REV-

## ACTIVE ORING CONTROLLER MODULE

### DESCRIPTION

In fault tolerant, redundant power distribution systems, oring power diodes are commonly used, when paralleling multiple power supplies, to prevent the occurrence of reverse current if an individual power supply voltage falls significantly below the others. Despite of low-cost and easy implementation, the use of oring power diodes suffers from high power dissipation especially in high current applications.



The active oring controller module is designed to replace oring power diodes in high-reliable 28V DC aircraft power systems. Each module is designed to parallel two power supplies with current rated up to 30A on each line. The module uses low on-resistance oring MOSFETs driven by an oring controller. Compared to oring power diodes, this module dissipates very low power loss and can be operated without any heat sink. In addition, the module can detect faults of dead short in the sourcing supply, a blown fuse, over load current, or open-circuit of oring MOSFETs. This module also provides an interface for customers to diagnose the short-circuit fault of oring MOSFETs.

### MODULE FEATURES

- Suitable for 28VDC power systems with current rated up to 30A
- No additional heat sinking or external cooling required
- No external bias supply required
- Low power dissipation
- Smooth switchover between two sourcing supply
- 0.5  $\mu$ s turn-off time limits peak reverse current
- Ability to reports faults of dead short power supply, blown fuses, over load current, and open-circuit of oring MOSFETs
- Ability to check short-circuit fault of oring MOSFETs
- TTL and COMS compatible control input/output
- Compact design
- Epoxy shell construction

TECHNICAL DATA  
DATA SHEET 5054, REV-

**ELECTRICAL CHARACTERISTICS** (Tested under 25°C unless otherwise specified)

<b>Power</b>	
Input Voltage	From 15V to 40V
Power Dissipation	See Fig 4
Current	Typical 30A
Maximum Voltage Drop	See Fig 3

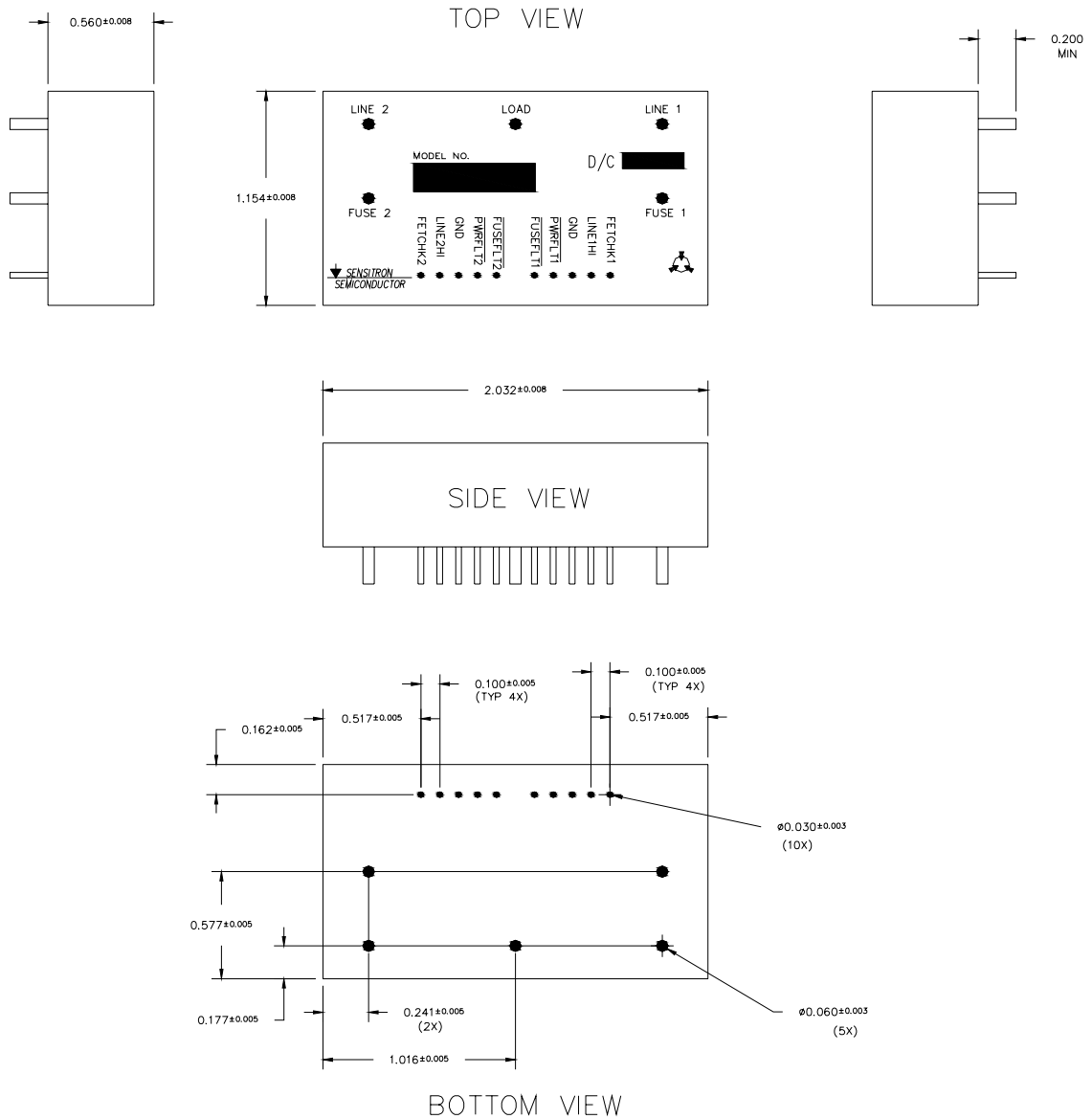
<b>Control</b>	
$\overline{\text{PWRFLT1}}$ , $\overline{\text{PWRFLT2}}$ $\overline{\text{FUSEFLE1}}$ , $\overline{\text{FUSEFLT2}}$ Pins Output Low	100mV typical 200mV maximum
$\overline{\text{LINE1HI}}$ , $\overline{\text{LINE2HI}}$ , Pins Output Low	150mV typical 400mV maximum
$\overline{\text{PWRFLT1}}$ , $\overline{\text{PWRFLT2}}$ $\overline{\text{FUSEFLE1}}$ , $\overline{\text{FUSEFLT2}}$ , $\overline{\text{LINE1HI}}$ , $\overline{\text{LINE2HI}}$ , Pins Leakage Current	0 typical $\pm 1\mu\text{A}$ maximum
$\overline{\text{FETCHK1}}$ , $\overline{\text{FETCHK2}}$ Pins Input Current	80mA maximum

**PHYSICAL CHARACTERISTICS**

<b>TEMPERATURE</b>	
Operating Temperature	$T_A = -40^\circ\text{C}$ To $85^\circ\text{C}$
Storage Temperature	$T_A = -55^\circ\text{C}$ To $125^\circ\text{C}$

TECHNICAL DATA  
DATA SHEET 5054, REV-

**MECHANICAL DIMENSIONS (in Inches)**



TECHNICAL DATA  
DATA SHEET 5054, REV-

### PIN DEFINITIONS

Pin Symbol	Pin Description
LINE1, LINE2	28V line input pins
FUSE1, FUSE2	If fuses are required in the power distribution path, they can be located between LINE1, 2 and FUSE1, 2. Otherwise short LINE1, 2 and FUSE1, 2.
Load	Output pin of the module. This pin is used to connect to the load.
FETCHK1, FETCHK2	FET check input pins. Together with PWFLT1, 2 output pins, the FETCHK1, 2 pins can be used to determine the short-circuit fault of oring MOSFETs.
LINE1HI, LINE2HI	These two pins indicate which channel has higher line voltage. The pin of higher line voltage gives open drain output, otherwise it is shorted to GND.
GND	Ground of the module. This pin should be connected to 28V return.
$\overline{PWRFLT1}$ , $\overline{PWRFLT2}$	Output pin of fault detection. (see Fault Table for details)
$\overline{FUSEFLT1}$ , $\overline{FUSEFLT2}$	Output pin of blown fuse detection.

### FAULT TABLE<sup>1</sup>

FETCHK	V <sub>DS</sub> (V) <250mV	V <sub>FUSE</sub> (V) >3.5V	V <sub>LINE</sub> (V) >26V	$\overline{FUSEFLT}$	$\overline{PWRFLT}$	COMMENTS
Low	True	True	True	Hi-Z	Hi-Z	Normal operation
Low	True	True	False	Hi-Z	Pull-Down	V <sub>LINE1</sub> <26V
Low	True	False	True	Pull-Down	Hi-Z	Blown fuse
Low	True	False	False	Pull-Down	Pull-Down	V <sub>LINE1</sub> <3.5V or Combination of proceeding two faults
Low	False	True	True	Hi-Z	Pull-Down	Open-circuit fault in MOSFETs or I <sub>load</sub> >180A
High <sup>2</sup>	True	True	True	Hi-Z	Hi-Z	Short-circuit fault in MOSFETs
High <sup>2</sup>	False	True	True	Hi-Z	Pull-Down	Good MOSFETs

Note1: Fault table is valid for both line1 and line2.

Note2: FETCHK can only be applied on the line with pin LINE1(2)HI high.

TECHNICAL DATA  
DATA SHEET 5054, REV-

**TYPICAL APPLICATIONS**

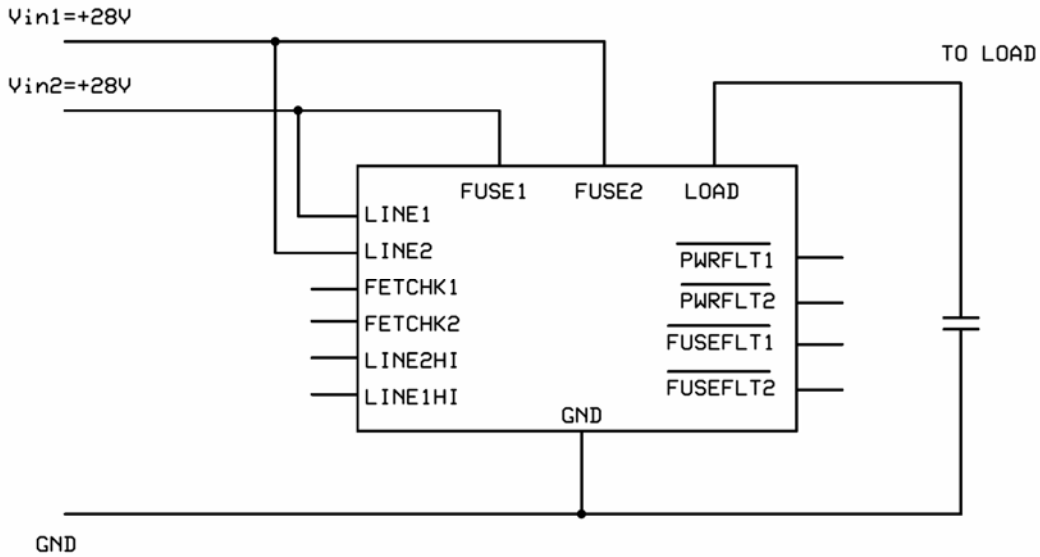


Fig. 1 Basic application

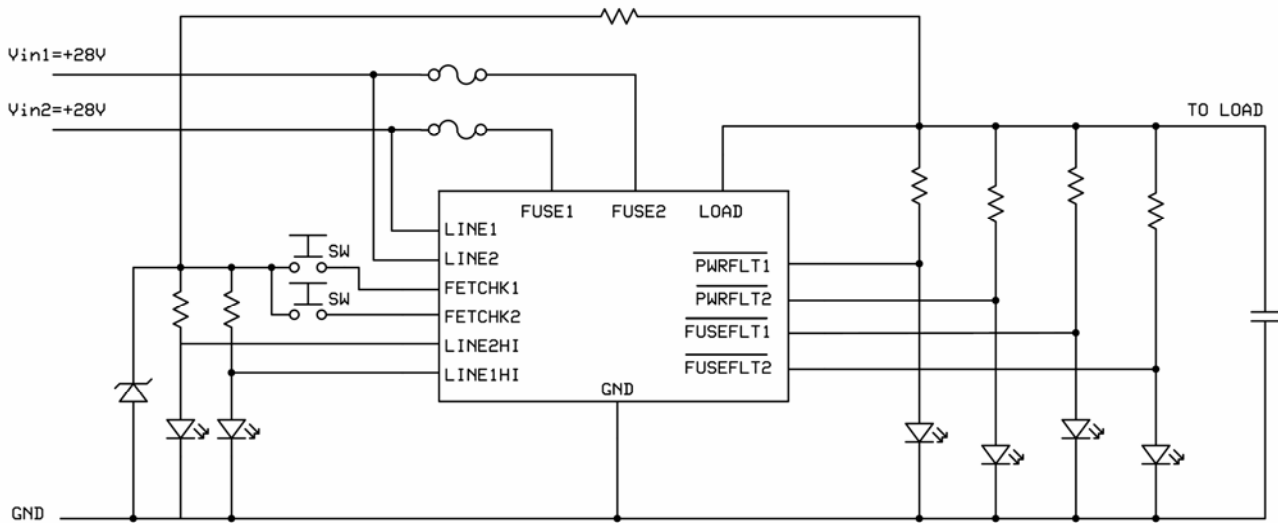


Fig. 2 A design example

TECHNICAL DATA  
DATA SHEET 5054, REV-

**TYPICAL PERFORMANCE CHARACTERISTICS** (Tested under 25°C unless otherwise specified)

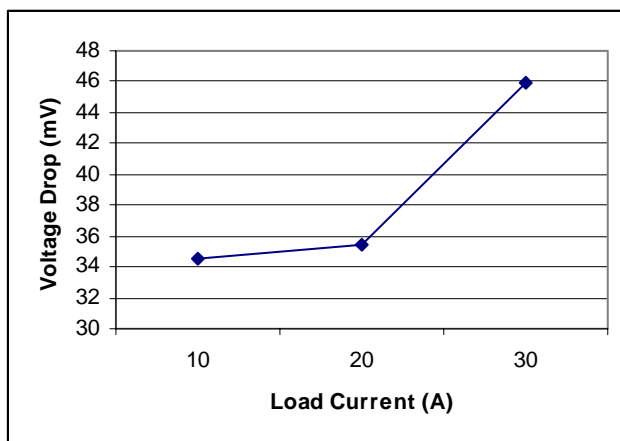


Fig3. Input and output voltage drop versus load current

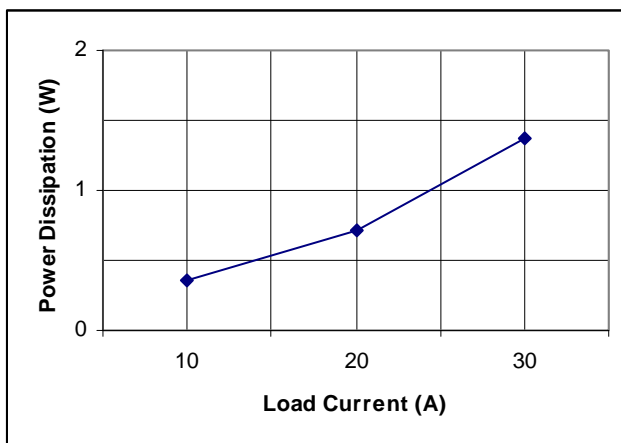


Fig4. Power dissipation loss versus load current

TECHNICAL DATA  
DATA SHEET 5054, REV-

**DISCLAIMER:**

- 1- *The information given herein, including the specifications and dimensions, is subject to change without prior notice to improve product characteristics. Before ordering, purchasers are advised to contact the Sensitron Semiconductor sales department for the latest version of the datasheet(s).*
- 2- *In cases where extremely high reliability is required (such as use in nuclear power control, aerospace and aviation, traffic equipment, medical equipment, and safety equipment), safety should be ensured by using semiconductor devices that feature assured safety or by means of users' fail-safe precautions or other arrangement.*
- 3- *In no event shall Sensitron Semiconductor be liable for any damages that may result from an accident or any other cause during operation of the user's units according to the datasheet(s). Sensitron Semiconductor assumes no responsibility for any intellectual property claims or any other problems that may result from applications of information, products or circuits described in the datasheets.*
- 4- *In no event shall Sensitron Semiconductor be liable for any failure in a semiconductor device or any secondary damage resulting from use at a value exceeding the absolute maximum rating.*
- 5- *No license is granted by the datasheet(s) under any patents or other rights of any third party or Sensitron Semiconductor.*
- 6- *The datasheet(s) may not be reproduced or duplicated, in any form, in whole or part, without the expressed written permission of Sensitron Semiconductor.*
- 7- *The products (technologies) described in the datasheet(s) are not to be provided to any party whose purpose in their application will hinder maintenance of international peace and safety nor are they to be applied to that purpose by their direct purchasers or any third party. When exporting these products (technologies), the necessary procedures are to be taken in accordance with related laws and regulations.*