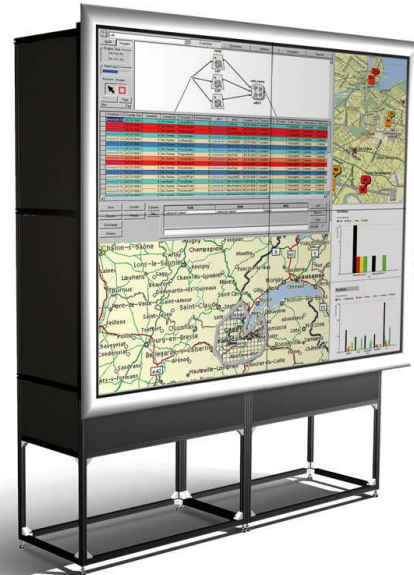


OverView cDR+80-DL

80" dual lamp video wall system integrating DLP™ technology with SXGA+ resolution.



Barco's OverView D series integrate cutting edge DLP™ technology into 80" video wall systems that are designed and optimized for use in a 24/7 mission critical environment. The Barco designed projection engine provides a set of unique features. The result is an unrivaled DLP™ rear projection system with outstanding picture quality, reliability and ease of use.

Superior display quality

- latest high contrast DLP™ technology
- optimal brightness, contrast, color uniformity and large viewing angles
- Optical Dimming to reach equal luminance values without loss of contrast or color depth on all screens
- Dynamic Feedback technology to maintain constant luminance over time

Reliability and lifetime serviceability

- dual redundant lamp allows you to rely 100% on your Barco display wall
- engineered for ease of maintenance
- dustfree overpressure design
- access to operation and service adjustments through IR remote control and an On-Screen Display
- easy lamp replacement from the rear of the system while system runs
- Barco's Lamp-Lease Program allows you to efficiently control operational costs

Flexibility

- designed to form display walls of any size, in a linear or curved setup

BARCO

Visibly yours

OverView cDR+80-DL

80" dual lamp video wall system integrating DLP™ technology with SXGA+ resolution.

- /> requires minimal installation depth
- innovative modular concept

Product specifications

OverView cDR+80-DL

Resolution	SXGA+ (1400 x 1050px)		
DMD chip	1400 x 1050px 0.95" ±12° tilt LVDS MTBF:650,000 hours Lifetime: 100,000 hours		
Number of used micromirrors	1.47 M		
Pixelshape	Square		
Aspect Ratio	4:3		
Lamp	<ul style="list-style-type: none"> • Lamp life (lamp manufacturer specs @ IEC 61947-1 test conditions): <ul style="list-style-type: none"> - 100 W: 2 x 10000 hours - 120 W: 2 x 6000 hours • Lamp modes: Hot stand-by, cold stand-by and Auto Switch mode • Lamp switching times: <ul style="list-style-type: none"> - After lamp switch: 0,5 seconds - After lamp failure: 1,5 seconds • Hot Standby-image reaches 50% brightness after lamp switch in less then 0.5 seconds 		
AC power	100-240 VAC, 60-50Hz		
Power		Cold standby	Hot standby
	<i>100 W</i>	190 W	285 W
	<i>120 W</i>	210 W	325 W
Heat dissipation		Cold standby	Hot standby
	<i>100 W</i>	650 BTU/h	975 BTU/h
	<i>120 W</i>	715 BTU/h	1110 BTU/h
Brightness	100W:700 ANSI Lumen 120W: 800 ANSI Lumen		
Contrast	1600:1		
Brightness uniformity	90% Automated lamp alignment after lamp change for optimized color uniformity and brightness Active patent pending mechanism for brightness tolerancing reduction		
Dimming	Optical Dimming with Dynamic Feedback Brightness locking: 50-100% optical dimming range, without color shift, loss of contrast and loss of colordepth Image equalization: All display modules can be set to equal brightness and contrast		
Color	EBU color triangle White point: 6500K, but can be set to other values		
Inputs	Standard: Dual DVI-D Optional: OverView D Multi input module: DVI-D, DVI-I, Multi Sync RGB input (VGA upto UXGA), Video Input (PAL, NTSC, SECAM)		
Genlock	48 – 62 Hz		
Dimensions structure	Diagonal: 80" nominal Width: 1600 mm / 63 in. Height 1200 mm / 47.2 in. Footprint 965 mm / 38.0 in. Depth: 1098 mm / 43.2 in. Socket Height: 1288 mm / 50.7 in. Socket Height: (min) 537 mm / 21.1 in.		