

FOR MESSRS :  

---

## **SPECIFICATION FOR REFERENCE**

(FOR LCD MNT 15" 17.1" APPLICATION PURPOSE)

TFT LCD BACKLIGHTING INVERTER

PART NO. : FIF1566-31A

BUYER'S PART NO.

### **CONTENTS**

- 1. Electrical Characteristics**
- 2. Functional Pin Description**
- 3. Mechanical Drawings**

## 1. Electrical Characteristics

	Items (Unit)	Sign.	Condition		Min.	Typ.	Max.
1	Input Voltage (Vdc)	Vin			11.0	12	13.0
2	Input Current (A)	Iin	Vin=12V	CTRL=0V	2.0	2.4	2.8
				CTRL=5V	0.8	1.2	1.6
3	Output Current Each Lmap1,2,3 (mA)	Iout 1,2,3	Vin=12V	CTRL=0V	6.3	7.0	7.5
				CTRL=5V	2.5	3.5	4.5
4	Output Current Each Lmap4,5,6 (mA)	Iout 4,5,6	Vin=12V	CTRL=0V	6.3	7.0	7.5
				CTRL=5V	2.5	3.5	4.5
5	Lamp Frequency (kHz)	f	Vin=12V	CTRL=0V	50	55	60
6	ON/OFF Control	ON	Vin=12V, ON/OFF=5V		Normal Operation		
		OFF	Vin=12V, ON/OFF=0V		Shunt-down (Lamp off)		
7	Dim Adjust (Lamp Current Control)	CTRL	CTRL=0V,Max Current		0 ~ 5 Volt.		
			CTRL=5V,Min Current				
8	Kick-Off Voltage(Vrms)	Vk-off	Kick-Off		MORE THAN 1300		

## 2. Functional Pin Description

### 2.1. Input Connector CN1 : 12505WR-12A00(YEON-HO) ,53261-1290(MOLEX)

Pin No.	Symbol	Description
11	CTRL	Dim Adjust, Apply 0V ~5Vdc to Control Lamp Current 0V : 6.7mA, 5V : 3.0mA (Each Lamp)
4,5,7,8,10,12	GND	GND
9	ON / OFF	Power System Return ( 5V:ON, 0V:OFF )
6	NC	No Connection
1,2,3	Vin	Input Voltage : 12V $\pm$ 1V

### 2.2. Output Connector CN2,3 : 20015WR – 05A01 (JST, YEON-HO, MOLEX)

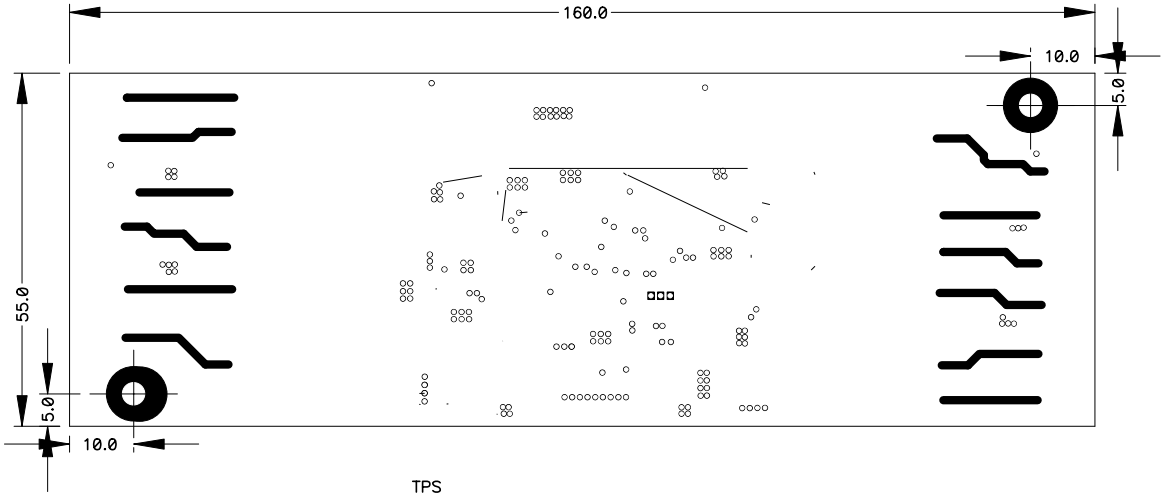
Pin No.	Symbol	Description
1	Lamp H1	High Voltage Connection to high side of Lamp.
2	Lamp H2	High Voltage Connection to high side of Lamp.
3	Lamp H3	High Voltage Connection to high side of Lamp.

### 2.2. Output Connector CN4,5 : S 3B-PH-KL (JST)

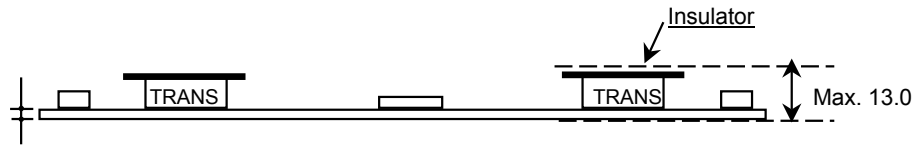
Pin No.	Symbol	Description
1	Lamp L1	LOW Voltage Connection to high side of Lamp.
2	Lamp L2	LOW Voltage Connection to high side of Lamp.
3	Lamp L3	LOW Voltage Connection to high side of Lamp.

### 3.Mechanical Drawing

#### 4-1.P.W.B

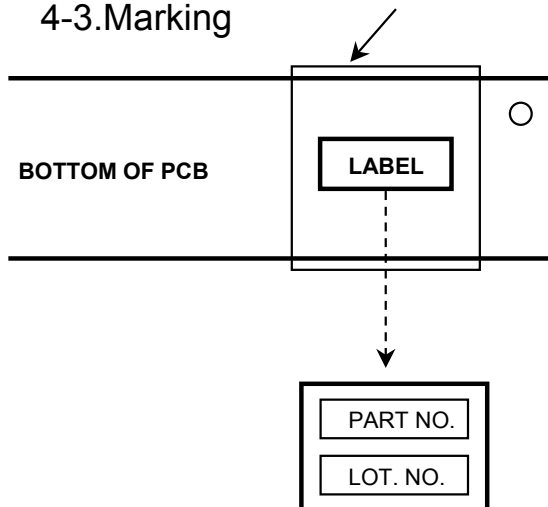


#### 4-2.Trans & Insulator



PCB : 1.2 mm

#### 4-3.Marking



\*.PART NO: FIF1566-31A

\*.LOT NO.: F ○○○○○○○○

↓                      ↓                      ↓  
 YEAR                  MONTH                  DAY