

規 格 書
Electrical Specification

Model No : LSE0107A1240

Description : 12V/3.33A 40W Output Adapter

Revision : 0.3

Issued Date : AUG.21. 2003

Customer Part No. :



力信興業股份有限公司




LI SHIN INTERNATIONAL ENTERPRISE CORP.

總公司：桃園縣大園鄉三石村三和路 3 巷 7 號（力信工業大樓）

7 Lane3, San Ho Rd, San-Shin Village, Ta-Yuan Hsing, Taoyuan Hsien, Taiwan, R.O.C.

Tel : (03)3831513(Rep.)

Fax : (03)3835738

Approve By	Check By	Prepared By
		



Change List			
ECN No	REV	Revision Description	Date
	0.1	Release to factory	05.15.2003
	0.2	MODIFY 2.10 Ripple change to 200mVp-p	06.11.2003
BB1-380062	0.3	Modify 2.12 OVP : Change to Shut down and auto-recovery function Tripped voltage will be less than 18Vdc	08.21.2003



Contents

1. Description..... 5

2. Electrical..... 5

 2.1 Input Voltage(AC~)..... 5

 2.2 Input Frequency..... 5

 2.3 Input Current..... 5

 2.4 Inrush Current..... 5

 2.5 Hold-Up time..... 5

 2.6 Input wattage..... 5

 2.7 Efficiency..... 5

 2.8 Safety Test..... 5

 2.9 Output Voltage and Current (DC)..... 5

 2.10 Ripple and Noise..... 6

 2.11 Over-Shoot and under-shoot..... 6

 2.12 Protection..... 6

 2.13 LED Indication..... 6

 2.14 Rise time..... 6

 2.15 Output voltage Temperature Coefficient..... 6

 2.16 Output Transient Response..... 6

3. Environment..... 6

 3.1 Temperature a. Operation..... 6

 3.2 Humidity..... 6

 3.3 Altitude..... 6

4. EMC..... 7

 4.1 EMS..... 7

 4.2 EMI..... 7

5. Reliability..... 7

 5.1 Life..... 7

 5.2 M.T.B.F..... 7

 5.3 Temperature Rise..... 7

 5.4 Burn-in..... 7

 5.5 Vibration Test..... 8

 5.6 Drop-Test..... 8

6. Mechanical..... 8



6.1	Plastic Case.....	8
6.2	Physical Size	8
6.3	Output cable	8



1. Description.

This product is a AC to DC power transfer device, it can provide for a 40W single dc output with constant voltage source.

2. Electrical.

2.1 Input Voltage(AC~).

- a. From 100 - 240Vac Normal.
- b. From 90 - 265Vac Universal.

2.2 Input Frequency.

From 47- 63Hz.

2.3 Input Current.

1.00A max at 90Vac input & dc output full-loading.

2.4 Inrush Current.

90A max at cold-start and 25°C , dc output full-loading and 230Vac input.

2.5 Hold-Up time.

10msec min. at dc output full-loading and 115Vac input.

2.6 Input wattage.

Less than 0.75W at 230Vac input & no-load condition.

2.7 Efficiency.

79% min. at dc output full-loading and 115/230Vac input.

2.8 Safety Test.

- a. Leakage current less than 0.75mA at 254Vac, 50Hz.
- b. Hi-Pot test : 1800Vac, 10mA, 1Sec between Primary to Secondary ground.
- c. Insulation : at dc 500Vdc, 1 Sec between Primary to Secondary circuit, IR shall $\geq 20M\Omega$.
- d. Grounding test : AC 30A , 2 Sec between input safety ground and SELV output GND, GR $\leq 0.1\Omega$.

2.9 Output Voltage and Current (DC).

V out	Range	I out(min)	I out(max)
12.00V	11.40 - 12.60V	0A	3.33A

**2.10 Ripple and Noise.**

Low frequency ripple (< 100KHz) \leq 200mVpp, and Total composite Ripple and Noise. Less than 300mVp-p, tested by dc loading side parallel with a 10uF/EC and 0.1uF/Ceramic. Capacitors and Measured Band-Width with DC-20MHz.

2.11 Over-Shoot and under-shoot.

Less than 10% of nominal Voltage value.

2.12 Protection.

- a. SCP : Short circuited protection and with auto-recovery function.
- b. OVP : Over Voltage protection with shut down and auto-recovery function, Tripped voltage will be less than 18Vdc.
- c. OCP : Over current protection with auto recovery function.
Current limit : 6.0A (max.)

2.13 LED Indication.

Green light for Nominal operation. Blank or Flash for SCP mode.

2.14 Rise time.

Rise time shall be less than 50msec. it should be measured from 10% to 90%of the output voltage,

2.15 Output voltage Temperature Coefficient.

Less than 0.2%/C.

2.16 Output Transient Response.

Dynamic loading condition.

DC output	I1 (A)	I2 (A)	dVmax.(V)	Time-max.	dl/dT
12.0	0.00	0.83	+/- 1.0V	10 msec.	\geq 50mA/usec.
12.0	0.83	1.66	+/- 1.0V	10 msec.	\geq 50mA/usec.
12.0	1.66	3.33	+/- 1.0V	10 msec.	\geq 50mA/usec.

3. Environment.**3.1 Temperature**

- a. Operation : 0 to 40 °C
- b. Storage : -40 to 70 °C

3.2 Humidity

- a. Operation : 20 to 80%
- b. Storage : 10 to 90%

3.3 Altitude.

From sea level to 10,000Ft (operation) and 40,000Ft (Non operation).

**4. EMC.**

4.1 EMS

Test Item	Test Specification	IEC Standards
ESD	Contact 8KV	61000-4-2
ESD	Air 15KV	61000-4-2
RF	FR : 26MHz-1.0GHz, Field Strength : 3V/M	61000-4-3
EFT	2KV on AC power line.	61000-4-4
SURGE	+/- 1KV (DM) & +/- 2KV (CM)	61000-4-5
CS	3V/M	61000-4-6
DIPS	0% 250Cy, 40% 5 Cy, 70% .5Cycle	61000-4-11

4.2 EMI

Referring Standards	Specification
FCC	Part 15,class B
VCCI	Class B
CISPR	Part 22,class B
C-TICK	AS/NZS3548
BSMI	CNS 13438 乙類 Class B

5. Reliability.

5.1 Life.

12000 hours (8 hours/day * 300 days/year * 5 years)

At dc output full loading, 115/230Vac input & ambient temperature 25C

5.2 M.T.B.F.

60,000 Power On Hours at 25°C

5.3 Temperature Rise.

Less than 45°C at nominal AC input / DC output full loading and environment temperature 25+/-1°C on Top/Bottom of plastic case.

5.4 Burn-in.

100% Burn-In with 80~100% loading & 35~45°C Environment temperature.



5.5 Vibration Test.

- a. Non operation vibration with shipping container shall be 2G'S peak, 7-50Hz, 4G'S / 50-500Hz, after test no abnormally to be found.
- b. Operation vibration shall be 0.5G'S peak, 10-60Hz, 3 AXES, after test no abnormally to be noted.

5.6 Drop-Test.

Test height 100cm, after drop test no function abnormally to be noted.

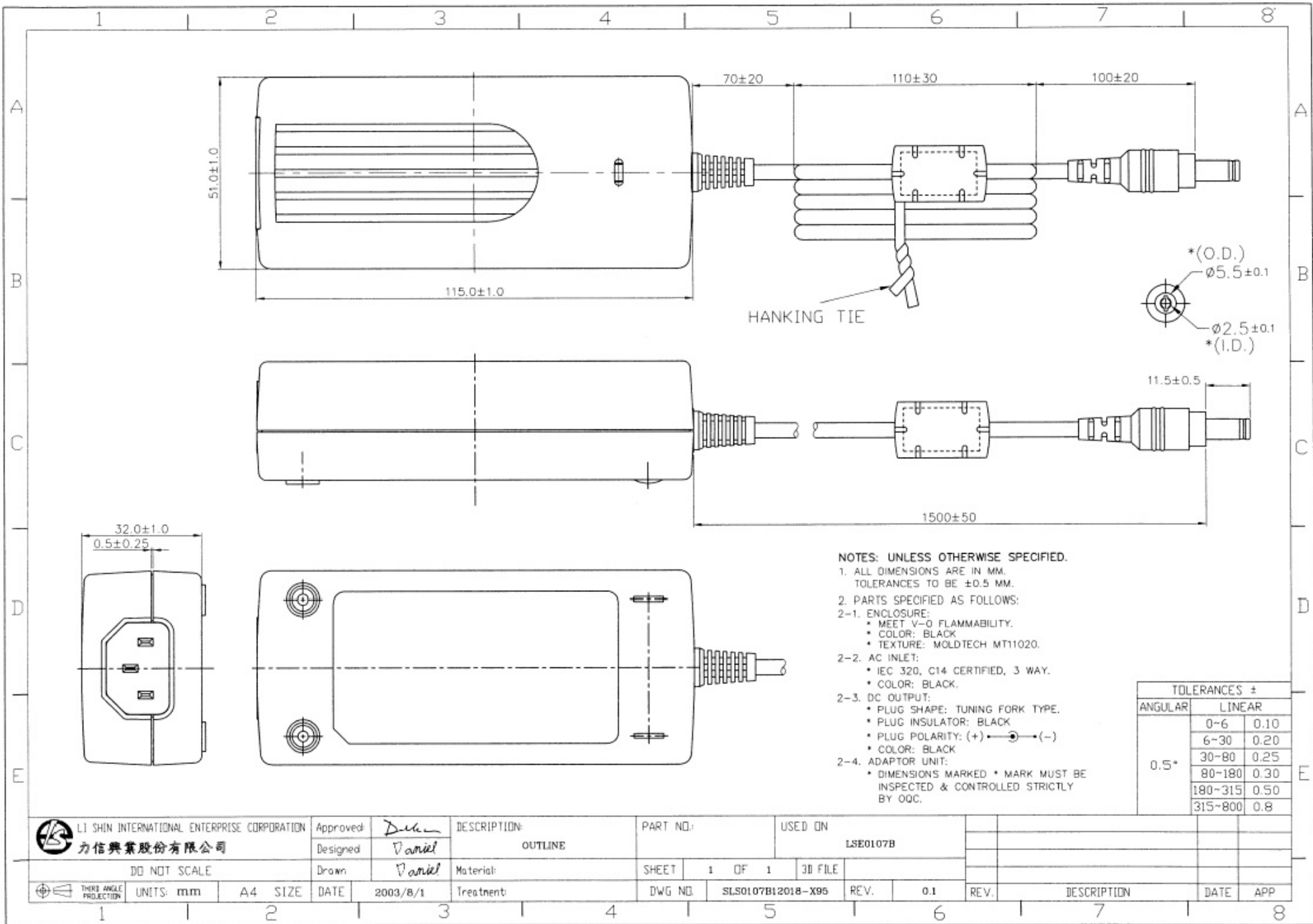
6. Mechanical.

6.1 Plastic Case : Case with UL PC+ABS GE C2950 material.

6.2 Physical Size : 115.00mm(L) × 51.00mm (W) × 32.00mm (H).

6.3 Output cable with UL2468/1185,18AWG wires and two pins direct angle dc jack plug.

END... ..



NOTES: UNLESS OTHERWISE SPECIFIED.

1. ALL DIMENSIONS ARE IN MM. TOLERANCES TO BE ± 0.5 MM.
2. PARTS SPECIFIED AS FOLLOWS:
 - 2-1. ENCLOSURE:
 - * MEET V-0 FLAMMABILITY.
 - * COLOR: BLACK
 - * TEXTURE: MOLDTECH MT11020.
 - 2-2. AC INLET:
 - * IEC 320, C14 CERTIFIED, 3 WAY.
 - * COLOR: BLACK.
 - 2-3. DC OUTPUT:
 - * PLUG SHAPE: TUNING FORK TYPE.
 - * PLUG INSULATOR: BLACK
 - * PLUG POLARITY: (+) $\bullet \rightarrow$ (-)
 - * COLOR: BLACK
 - 2-4. ADAPTOR UNIT:
 - * DIMENSIONS MARKED * MARK MUST BE INSPECTED & CONTROLLED STRICTLY BY OQC.

TOLERANCES \pm		
ANGULAR	LINEAR	
0.5°	0-6	0.10
	6-30	0.20
	30-80	0.25
	80-180	0.30
	180-315	0.50
	315-800	0.8

L.I. SHIN INTERNATIONAL ENTERPRISE CORPORATION 力信興業股份有限公司	Approved: <i>Daniel</i>	DESCRIPTION: OUTLINE	PART NO.:	USED ON						
	Designed: <i>Daniel</i>			LSE0107B						
DO NOT SCALE	Drawn: <i>Daniel</i>	Material:	SHEET 1 OF 1	3D FILE						
THIRD ANGLE PROJECTION	UNITS: mm	A4 SIZE	DATE: 2003/8/1	Treatment:	DWG NO. SL50107B12018-X95	REV. 0.1	REV.	DESCRIPTION	DATE	APP

NOTES: UNLESS OTHERWISE SPECIFIED.

1. ALL DIMENSIONS ARE IN mm.
TOLERANCES TO BE ± 0.25 mm.
2. THE ARRANGEMENT OF LAMINATE WITH MATERIAL THICKNESS AS FOLLOWS:
(反銀面上層紙)
① OPP FILM(MAT) 0.025
② ACRYLIC ADHESIVE 0.018
③ POLYESTER(#75) 0.075
④ ACRYLIC ADHESIVE 0.028

GRAND TOTAL THK. 0.146 \pm 10%

3. THE LINES ARE 0.5 mm WIDE.
4. COLOR: CHARACTERS, LOGOS AND LINES SHALL BE SILVER, BASE TO BE BLACK (GE #701). (黑底銀字)
5. APPROVED VENDOR MUST BE UL RECOGNIZED AND CSA CERTIFIED.
6. THE LABEL SHALL BE MARKED WITH THE CSA VENDOR IDENTIFICATION MARK AS SPECIFIED IN THE CSA LIST (CM, CM-1, ...).
7. SAFETY STANDARD ORGANIZATION IN SYMBOLS ARE 7.62MM TO 5.0MM HIGH.
8. LETTERING SHOULD BE CLEAR-CUT, SURFACE TO BE FREE OF DEFECT.
9. BAR CODE(CODE128) SPECIFIED AS FOLLOWS:(PRINTED BY LI SHIN)
 - 1--FACTORY CODE, CHINA SU ZHOU(Kowloon)-->A2
 - 2--A. D. THE END NUMBER OF PRODUCE YEAR.
1995-->95, 1996-->96, 1997-->97, ...,
2000-->2K, ..., 3000-->3K
 - 3--WEEK, PRODUCE WEEK. 01, 02, 03, ..., 52, ...
 - 4--PRODUCE NO. SERIAL NO. (MONTH RESET FROM
000001 TO 999999)



- (1 CHARACTER) 2
- (2 CHARACTERS) 2
- (2 CHARACTERS) 3
- (6 CHARACTERS) 4



LI SHIN INTERNATIONAL ENTERPRISE CORP.

AC ADAPTER 交流适配器

MODEL: 型号:LSE0107A1240
INPUT: 输入:100-240V~, 50/60Hz 1A
OUTPUT: 输出:12V --- 3.33A 40W MAX



WARNING: 注意:

RISK OF ELECTRIC SHOCK DO NOT OPEN

For Indoor Use Only 仅限资讯设备使用



ADVERTENCIA:

RIESGO DE SHOCK ELÉCTRICO NO ABRA

Para uso interior solamente



品名: 交流适配器
型號: LSE0107A1240
額定功率: AC100-240V, 50/60Hz, 1A
輸出規格: DC12V, 3.33A, 40W
製造商: Suzhou Fonggood Electronic Co., Ltd. / China
總經理: 力信國際企業有限公司
AS 工廠 (02)822-1068/1069

*Apparatet må kun tilkoples jordet stikkontakt!
*Apparatet skal anvendes til jordet stikkontakt!
*Den anvendes til ett nätverk!
*Endast för hontorsmansstän!
*For IEC 60338 products only!

D43011

020642-11

45XX
N136 N18020 CE cULus

LEVEL 3 LISTED
I.T.E. POWER SUPPLY E193430

BZ02

MADE IN CHINA 中国制造

CM-1 B

LABEL SIZE:

74.25(L) x 39.25(W),
R3(3X), C4.3



LI SHIN INTERNATIONAL ENTERPRISE CORPORATION
力信國際股份有限公司

Approved: *[Signature]*

Designed: *[Signature]*

Drawn: *[Signature]*

DATE: 2002/06/12

SPICE-LABEL

Material:

Treatment:

PART NO.:

S7341-0448-22

USED ON

LSE0107A1240

SIZE:

1

OF

1

3D FILE

DRG NO.:

3S7341-0448-22

REV.:

0.1

REV.:

DESCRIPTION

DATE

APP

1

2

3

4

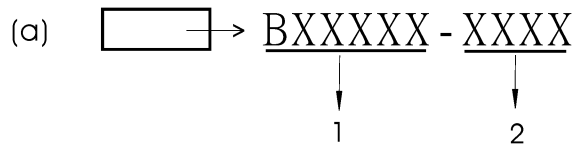
5

6

7

8

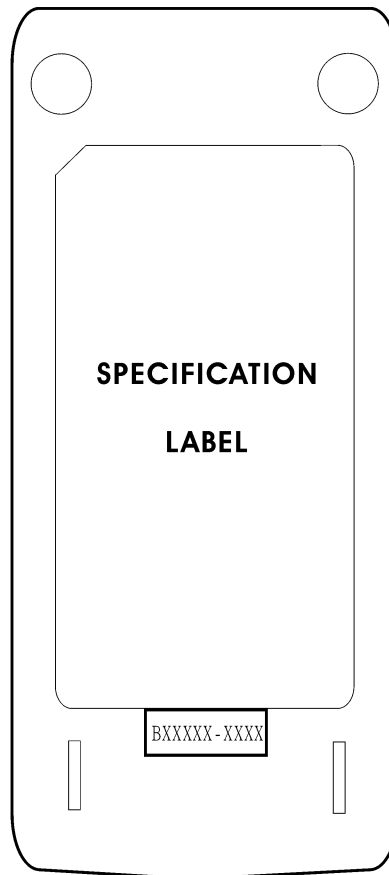
- 1.尺寸:16.0(L)X6.0(W)
- 2.角度:
- 3.顏色:白色
- 4.材質:UL無塵紙列印標籤
- 5.厚度:
- 6.編碼原則如下:





1.xxxxx : 表系列機種識別碼
 力信機種料號,後6碼:
 例:SLS0107B12000,即
 印:B12000.

2.xxxx : 表生產內控碼,依製程需求調整.

(b)code : 阿拉伯數字及英文數字代表



 LI SHIN INTERNATIONAL ENTERPRISE CORPORATION 力信興業股份有限公司		Approved: <i>Cammy</i> Designed:	DESCRIPTION: SPEC. LABEL	PART NO. :	USED ON LSE0107B					
DO NOT SCALE		Drawn: Cammy	Material:	SHEET 1 OF 1	3D FILE					
 THIRD ANGLE PROJECTION	UNITS: mm	A3 SIZE	DATE: 2003/07/01	Treatment:	DWG NO. 01078標籤位置圖-701	REV. 0.1	REV.	DESCRIPTION	DATE	APP