



# PortaGig 62 and SSD Manual

Production-Quality Portable RAID  
FireWire 800, USB 2.0, eSATA host connectivity

610035-1.3 PortaGig 62 Manual.pdf  
June 9, 2011



## Proprietary Notice and Disclaimer

Unless noted otherwise, this document and the information herein disclosed are proprietary to Glyph Technologies, 3736 Kellogg Road, Cortland NY 13045 ("GLYPH"). Any person or entity to whom this document is furnished or having possession thereof, by acceptance, assumes custody thereof and agrees that the document is given in confidence and will not be copied or reproduced in whole or in part, nor used or revealed to any person in any manner except to meet the purposes for which it was delivered. Additional rights and obligations regarding this document and its contents may be defined by a separate written agreement with GLYPH, and if so, such separate written agreement shall be controlling.

The information in this document is subject to change without notice, and should not be construed as a commitment by GLYPH. Although GLYPH will make every effort to inform users of substantive errors, GLYPH disclaims all liability for any loss or damage resulting from the use of this manual or any software described herein, including without limitation contingent, special, or incidental liability.

© 2010 Glyph Technologies. All rights reserved. Specifications are subject to change without notice. Glyph and the Glyph logo are registered trademarks of Glyph Technologies. All other brands and product names mentioned are trademarks of their respective holders.

## Contacting Glyph

Please use the following contact information to contact Glyph and its distributors.  
Glyph USA offers phone support Monday through Friday, 8:00 am to 5:00 PM Eastern Time.

Note: DO NOT ship any return goods to the mailing addresses below unless you have a valid RMA number. All goods will be refused delivery unless a valid RMA number is displayed on the outside of the package.

### United States of America

Glyph Technologies  
3736 Kellogg Rd.  
Cortland, NY 13045  
USA  
Phone: +1 607-275-0345  
Fax: +1 607-275-9464  
www.glyphtech.com

Sales Contact  
sales@glyphtech.com

Technical Support:  
tech@glyphtech.com

## Unpacking Your PortaGig 62

Your Glyph PortaGig 62 and accessories are packaged in a sturdy shipping container. Please inspect the container for evidence of shipping damage and mishandling. If the container is damaged, file a report with the carrier or dealer immediately. Do not attempt to unpack and operate your PortaGig 62 until the carrier or dealer confirms the damage. If the container is in good condition, proceed with unpacking the PortaGig 62. Verify that all of the items described in the next section are present and in good condition. If any of the items you expect to find in your container is missing or damaged, contact the dealer before proceeding any further. In any case, do keep the shipping container and all packing materials in a safe place.

### The PortaGig 62 package includes:

PortaGig 62 Hard Drive  
FireWire 800 (9-pin to 9-pin) cable  
USB Cable  
Universal AC external power supply  
Glyph Manager software installer disk

### Features

7,200 RPM and 5,400 RPM models available  
SSD models available  
RAID 0, RAID 1 and Spanning modes  
Bus-powered with FireWire 800  
Internal fan for maximum airflow and proper cooling  
Rear power switch  
Applications: Field recording, moving audio, video, graphics, and prepress files  
Includes universal power supply  
3 Year Warranty  
2 Year Free Basic Data Recovery\*  
1 Year Advance Replacement in USA (Continental 48 states)

*\*While Glyph is not obligated to recover lost data, we always give it our best effort. Nonetheless, we can't guarantee we'll always be successful.*

## Specifications

Part Number	7,200 RPM: PG501B-x (x = drive capacity) 5,400 RPM: PG504B-x (x = drive capacity) Solid State Drive: PG50SB-x (x = drive capacity)
Interface	(2) FireWire 800 (IEEE 1394b) 9-pin ports (1) USB 2.0 Hi-speed (device-side) port (1) eSATA 3Gbit/s port
Bridging Chip	Oxford 934
Maximum Transfer Rate	eSATA port: 3 Gbit/s
Sustained Transfer Rate	up to 83MB/sec (FW800) up to 85MB/sec (SSD)
Dimensions	H 1" x W 4.8" x D 3.6"
Configuration	Portable enclosure
Weight	0.5 lb. / 0.3 kg (HDD Version) 0.4 lb. / 0.2 kg (SSD Version)
Power Supply	Universal 100-240v 50/60 Hz
OS Compatibility	Mac OS 8.6, 9.X, 10.X Microsoft Windows 98SE, 2000, XP, Vista, 7 Modern Unix-based, Linux, or BSD
Warranty	3 Years 2 Years Free Basic Data Recovery* 1 Year Overnight Advance Replace in USA (Continental 48 states)

## Content Creation Applications

Qualified with Final Cut Pro, Avid Media Composer, Adobe Premiere, and all major audio production packages that support FireWire storage, including Digidesign Pro Tools, Steinberg Nuendo and Cubase, Apple Logic, MOTU Digital Performer, Cakewalk Sonar, Sony Vegas.

## About the PortaGig 62

PortaGig 62 is modeled after its powerful big brother the PortaGig 62, and high-performance storage in a tiny footprint. With two internal SATA drives available in 7,200 and 5,400 RPM, the PortaGig 62 supports RAID 0, RAID 1, and Spanning modes. A built-in fan keeps the drives cool while Glyph Manager software constantly monitors the drive and enclosure health, notifying you if there is a problem.

## Ports

On the rear of the PortaGig 62 there are two FireWire 800 ports, one eSATA port, and a USB 2.0 port. Officially, FireWire 800 ports are IEEE 1394b ports that run at up to 800Mbps/sec. One of these ports should be connected to your computer, and the other should be connected to other downstream FireWire devices. It doesn't matter which port you connect to the computer, they are functionally identical. If your computer has a FireWire 800 port, use the provided FireWire 800 9-pin cable. If your computer has a FireWire 400 port only, you can use a FireWire 800 to FireWire 400 converter cable, available from Glyph (part# CAB-FW800-9/6-2). If your computer doesn't have any FireWire ports you will need to purchase a FireWire adapter card. Check the Glyph web site for suggestions.

The fastest interface on the PortaGig 62 is the eSATA port. If you choose to connect your PortaGig 62 using eSATA, you will need an eSATA port on your computer. Glyph sells various eSATA cards, please check the website for details. The PortaGig 62 does not ship with an eSATA cable.

## Bus Power

Bus-powered with FireWire 800, the PortaGig 62 also includes USB and eSATA ports for optimum compatibility, allowing you to easily work on the road with a reliable RAID. Although eSATA is not a bus-powered interface, you can use the eSATA connection for fast data transfer (up to 177MB/s) while simultaneously using the FireWire 800 connection to power the drive. An external power supply is included with the PortaGig 62 if bus power is not available or is insufficient.

PortaGig 62 can be run successfully using FireWire bus power supplied by many notebook computers, however Glyph can't guarantee compatibility with all notebooks due to differing bus power specs. If you want to guarantee PortaGig 62 will work, use the included DC supply.

## Glyph Manager Software

Glyph Manager software constantly monitors the drive and enclosure health, notifying you if there is a problem, allowing you to work on the road easily and reliably. Connected by FireWire 800, USB or eSATA, it reports the drive's health and temperature as a background task. It is not necessary to install Glyph Manager for the PortaGig 62 to function, but is very convenient in troubleshooting, notifying you if your drive needs attention.

## Front panel LED

The PortaGig 62 front panel has a bi-color LED. The LED will display solid blue when power is on. The LED will flash blue when there is disk activity. The LED will flash or display a solid red color when error conditions exist with the drive or enclosure. Any error that results in the system state "Halted" generates a solid red LED on the front panel of the drive. All other errors result in the blinking red LED. All errors will animate the Glyph ball in the dock under OS X or generate an error balloon under Windows, if Glyph Manager software is installed.

## About eSATA

- eSATA is an external interface technology that grew from the internal SATA I interface.
- The PortaGig 62 eSATA port supports speeds up to 3 Gb/sec (300 MB/sec), much faster than FireWire 400 or FireWire 800.
- Shielded eSATA cables up to 2 meters in length are available.
- eSATA cables are different than SATA I cables, they are shielded and cannot be used with internal SATA I connectors.
- eSATA uses a "point-to-point" connection, therefore each eSATA drive needs to be connected to its own eSATA port.
- Most computers do not have built-in eSATA, so you'll need a PCI card to connect your drive with eSATA. Glyph sells various eSATA cards.

## About FireWire

FireWire is an implementation of the IEEE 1394 serial bus standard. It not only supports automatic configuration ("plug and play") and hot-swapping of devices, it's fast, and best of all it's reliable for audio/video as well as for computer peripherals. FireWire supports peripherals in a tree-like structure, and it allows peer-to-peer device communication—e.g. between a scanner and a printer—to take place, without using system memory or the CPU. With FireWire you can hook up to 63 devices to the same bus, with cable lengths of up to 4.5 meters (14 feet) including internal cabling, allowed between devices. Its cable is convenient and can also carry power. This allows low-consumption devices to operate without a separate power cord, by using power supplied by other devices on the bus.

## About FireWire 800

- FireWire 800 supports speeds up to 800 Mb/sec, twice as fast as FireWire 400.
- If your computer does not have built-in FireWire 800, you'll need a PCI card to achieve a true FireWire 800 connection.
- Most 800 ports are Bi-Lingual, which means they speak both FireWire 400 and FireWire 800.
- If you connect a 400 device to an 800 device, you will be running at 400 speed maximum.
- FireWire is forward-compatible and back-compatible.
- Beta cables are used to connect 800 devices to 800 devices.
- Bi-Lingual cables are available to connect 400 devices to 800 devices.
- Bi-Lingual cables have a 9-pin Bi-Lingual connector at one end and a 4-pin or 6-pin FireWire 400 connector at the other end.

## About the PortaGig 62 and Drive Modes

The PortaGig 62 enclosure contains two hard disk drives, which function as one single volume. Through the use of the Glyph Manager software utility, it supports three drive modes: RAID 1 (mirroring), RAID 0 (striping), and Spanning. Each drive mode has its own advantages, depending upon the application.

**RAID 1 (mirroring)** offers data redundancy and real-time backup by writing the same data to the two hard drives at the same time. Should a drive failure happen, data is still available on the remaining drive. In RAID 1 mode, the two drives are seen by the computer as one volume, but with half the capacity. For example, a 1TB PortaGig 62 will be seen as a 500GB drive. Reading and writing occurs on both drives simultaneously so that each of the drives contains exactly the same data, mirroring each other. If either of the drives should fail the other is there to continue to provide operation.

**RAID 0 (striping)** increases the performance of the drive system by spreading the data across two drives. RAID 0 is a proven technology for editing video, working with huge graphics files, sound libraries, and streaming instruments that play hundreds of samples simultaneously. RAID 0 is the default shipping drive mode. In RAID 0 (striping) mode, the two drives are seen by the computer as one large drive, and reading and writing occurs on both drives simultaneously. It is designed to increase the performance and data throughput of the drive system. The PortaGig 62's built-in RAID controller splits each piece of data across both of the drives in segments and distributes the I/O burden. Since data is written without any form of parity data-checking, it allows for the fastest data transfer of all other RAID levels. However, if one drive becomes damaged, the data on both drives can become corrupted. RAID 0 is not redundant or fault tolerant like RAID levels 1, 3, and 5, but the trade off is that it's the fastest of all RAID levels. **MAKE SURE TO BACKUP YOUR DATA OFTEN!**

In **Spanning mode**, the two drives are seen as one large drive and data is written sequentially across them. When the first drive fills to the limit, data is then written to the second drive. This mode is useful for applications requiring large volumes, but not requiring the speed of RAID 0. Spanning does not provide any performance or redundancy benefits.

# Understanding Glyph Manager Software

**NOTE:** For information on installing Glyph Manager, see installation instructions later in this manual

The Glyph PortaGig 62 ships with Glyph Manager software, a utility for Mac OS X and Windows. When a PortaGig 62 is connected to the computer either by USB, eSATA, or FireWire 800, information about the drives contained within the PortaGig 62 will be displayed. Glyph Manager essentially does two things:

1. Configures the PortaGig 62 in one of the three drive modes: RAID 1, RAID 0, and Spanning
2. Constantly monitors the health of the drives and fan, and displays the health status. When a problem is detected, Glyph Manager alerts the user by animating in the Mac OS X dock or displaying an error balloon from the Windows System Tray. Data can then be backed up before any is lost due to drive failure.

**NOTE:** Glyph Manager requires special configurations to communicate with the PortaGig 62 over eSATA. Below are the two conditions in which Glyph Manager will function over eSATA:

1. On Mac laptops running OS X when connected to the FirmTek SeriTek/2SM2-E ExpressCard Adapter
2. On Windows XP, Vista and Windows 7 machines with motherboards that include onboard eSATA

## The Glyph Manager screen display:

When installed in Mac OS X, the left hand pane of the Glyph Manager screen displays general information regarding all Glyph enclosures that can be monitored (GT 062, PortaGig 62, PortaGig 62). Each will be displayed with a status state, Model and Serial number. The status of all the enclosure states will be displayed in the System Status box below. The right hand pane will display information specific to whichever of the enclosure units is highlighted.

In both Windows and Mac OS X, Glyph Manager monitors several functional parameters of your Glyph PortaGig 62 drive arrays including Serial number, Volume name, connection type, configuration, selected configuration, fan speed, enclosure and individual drive temperatures, array and drive health. Additionally, in Windows, Glyph Manager monitors the Quick Removal Policy. For how to change this policy, please see the article "Windows Write Performance" on the Glyph web site ([http://www.glyphtech.com/docs/630012\\_WinXP\\_Vista\\_write\\_performance.pdf](http://www.glyphtech.com/docs/630012_WinXP_Vista_write_performance.pdf)).

**NOTE:** Glyph Manager does not, however, format your PortaGig 62. After configuring your PortaGig 62 in one of the three drive modes, you must take further steps to format and prepare it for use. These steps are explained in the next sections.

## Array Information:

Displayed are the Serial number of the selected enclosure, the volume name (once the drive has been partitioned) and the connection type.

## Configuration and Selected Configuration:

Normally the Configuration and Selected Configuration should match. "Configuration" is the current disk array configuration, as it was last set. "Selected configuration" is the new configuration that it's being changed to, which is set using the Change Configuration utility. These would be mismatched if you are in the process of changing from one drive mode to another, such as changing from RAID 0 to RAID 1. If these are mismatched, you can set them to match in one of 2 ways:

1. Answer yes to initialize the disk question when Glyph Manager first detects the newly selected array. This changes to the "Selected configuration".
2. Use Glyph Manager to change "Selected configuration" to match "Configuration". This keeps the current configuration.

## Fan Speed:

The Glyph Manager software controls the enclosure's internal fan rpm, and it is normal for it to vary. It is possible at times for the software to turn the fan off, so a speed of 0 is also a normal condition. The fan speed display is used in helping to diagnose problems relating to excessive temperatures.

## **Temperature:**

Individual drive temperatures are monitored, as well as the temperature of the “bridge” (the internal circuits). Drive temperatures over 68 C is detrimental to continued proper operation of the drives.

## **Status:**

Indicates array functionality. A properly functioning array condition is “Fully operational”. Other states are: “Initialized”, “Degraded operation” and “Halted”. “Degraded operation” means that a drive has failed. Due to the redundant nature of a RAID 1 array no data has been lost and operation can continue. However, the failure of another drive will result in data loss. The failed drive should be replaced as soon as possible. “Halted” means that the RAID array cannot continue operation due to drive failure and that data has been lost. A drive failure is catastrophic when the array is configured as either Spanning or RAID 0. A loss of a single drive will result in the loss of all data.

## **LED behavior relating to Glyph Manager:**

Any error that results in the system state “Halted” generates a solid red LED on the front panel of the drive. All other errors - including RAID state mismatch - result in the blinking red LED. All errors will animate the Glyph ball in the dock under OS X or generate an error balloon under Windows.

**NOTE:** It is normal for the LED to flash red when the unit is powered on. Since the drives inside the PortaGig 62 take a few seconds to spin up, they are “offline” for a moment when the controller looks for them, and the red warning LED comes on. When they fully spin up the controller sees that everything is normal, and turns the red LED off.

## **Init status:**

In normal operation the status should be “Success”. Possible error conditions are “Disk too small”, “Incorrect disk count”, “Invalid RAID set”, “Multiple RAID sets”, “Disk erase fail” and “Unknown init error”. Any of these messages indicate a problem with the RAID array.

## **Individual drive information:**

### **Port Status:**

Indicates the condition of the drive within the array

“Active” means the disk is in use in the array

“Hot standby” means that a RAID mode has been selected that includes a standby drive that will be automatically added to the array to replace a failed drive.

“Spare” and “Unused” mean that a RAID mode has been selected that does not require the drive.

“Rebuilding” indicates that the drive is in use in the array but that the data is being rebuilt. Under normal operation this will not occur. Occasionally after an improper shutdown - for example if the unit was powered down while data was being written to the disk - you may see a rebuild. If you see repeated rebuilds, please contact Glyph support.

“Failed” means that the drive has been removed from the array due to failure.

“Missing” means that no drive is detected, likely due to disk failure.

### **Drive errors and rebuild status:**

Persistent and recoverable errors: Recoverable errors are write errors that required a retry to complete. Persistent errors indicate a disk area that cannot be read from or written to. These should normally be zero. Non-zero numbers indicate a drive that is starting to fail.

### **Drive smart status:**

For “Active” drives, “smart status” should normally be “Disk OK”. “Disk failing - DANGER!” and “SMART not enabled” indicate a drive problem which requires the drive be replaced.

## Glyph Manager Operation In Mac OS X

The PortaGig 62 ships in RAID 0 mode, and drive mode changes are done by using the Glyph Manager software utility (not the OS X Disk Utility). Disk Utility is used to format the new device after drive mode changes are made.

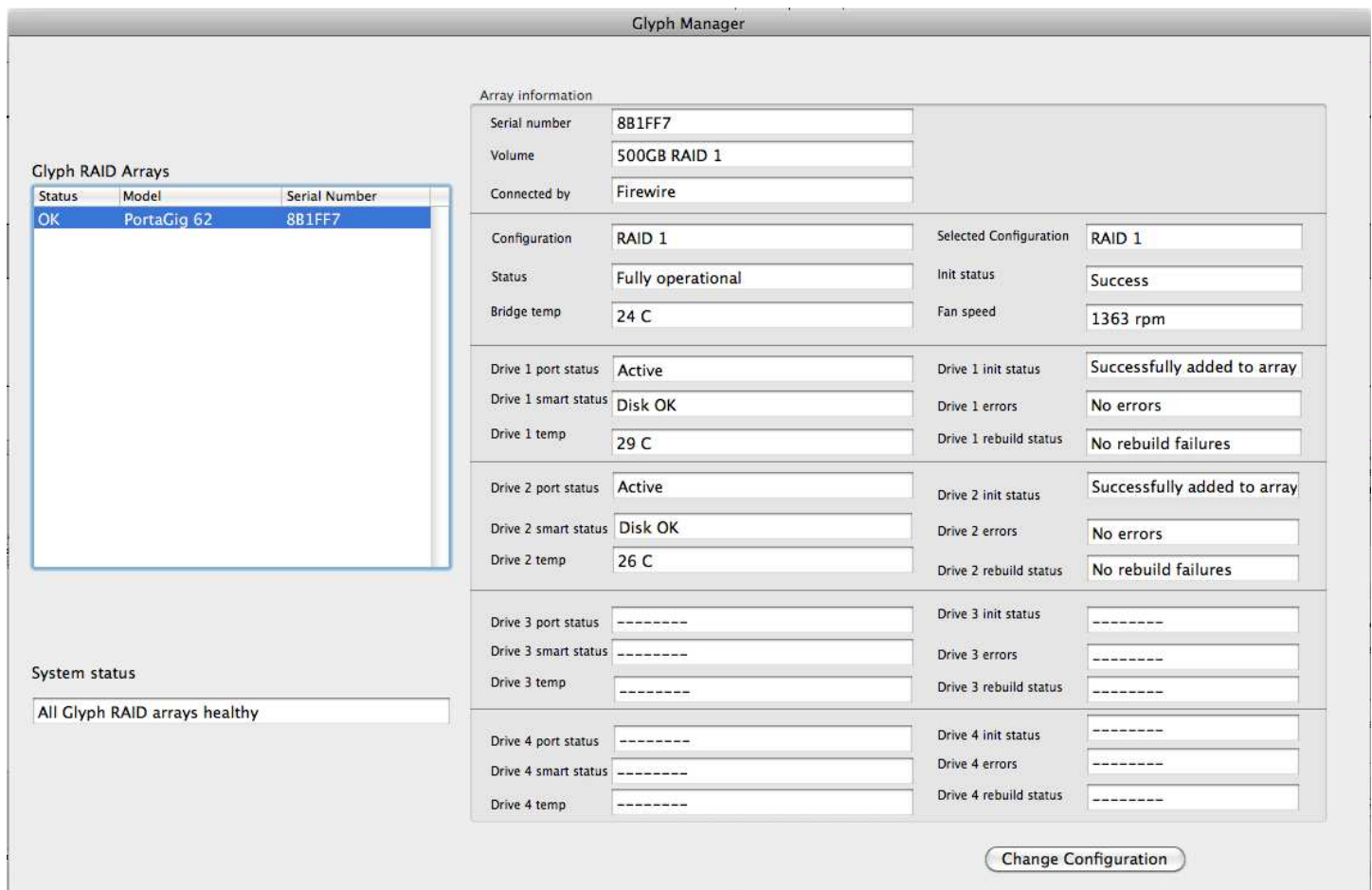
**READ THIS FIRST!** Changing drive modes with Glyph Manager will require you to re-format the PortaGig 62, and result in erasing all of the current data on the drive. Make sure you backup all data before doing so!

To change the drive mode, follow these steps:

1. Install Glyph Manager software.

2. Connect the PortaGig 62 via FireWire or USB, and open Glyph Manager software. If you have more than one PortaGig 62 connected, choose the desired unit from the list on the left. You can identify the units by their volume names, or by their PCBA serial numbers, which are located on a sticker on the bottom of each unit. The serial number in Glyph Manager should match the last six digits of the PCBA serial number on the sticker.

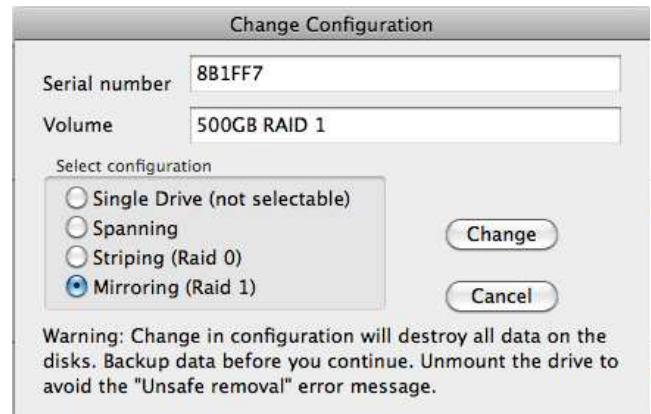
**NOTE:** To change drive modes, the PortaGig 62 must be connected via FireWire or USB. Glyph Manager will monitor an eSATA connected PortaGig 62, but will not allow you to change drive modes.



3. Un-mount the volume(s) associated with the unit you are configuring by dragging them to the trash in the Finder. **This is very important to ensure successful drive mode change because it forces Mac OS to "forget" the current configuration.**

4. Click the **Change Configuration** button.

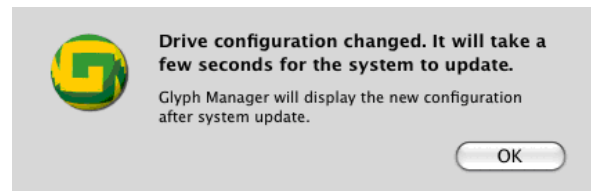
5. Select the desired configuration on the following screen and click the **Change** button. Note that the top selection (single drive) is not selectable at this time.



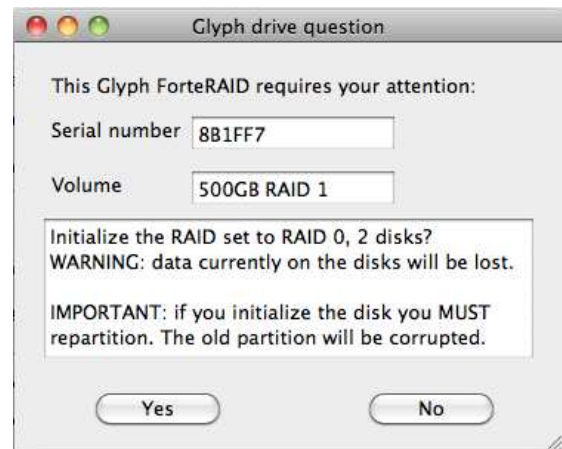
6. The next window requires that you verify the change request. Click **OK** to change the drive configuration. NOTE: ALL DATA ON THE DRIVES WILL BE DESTROYED.



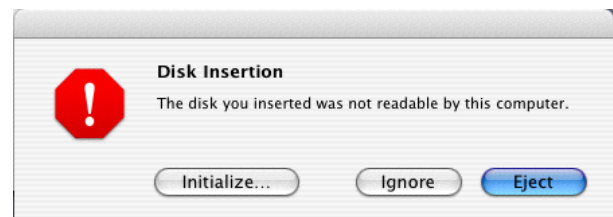
7. The next window reports that the drive configuration has changed. After a few seconds the system will update, and Glyph Manager will display the new drive configuration. Click **OK** in this window.



7. The next window prompts you to finalize the new configuration. Click **YES** to accept the configuration change.



8. At this point you **may** see the Mac OS Disk Insertion window. Now that the drive configuration has changed, Mac OS has re-discovered the PortaGig 62 and prompts you to format the newly configured device. If you see the window below, click **Eject**. If you do not see this message, simply go to step 9.



9. Power off the PortaGig 62, unplug the FireWire or eSATA cable, plug the cable back in, then power it back on again. **This is important to force Mac OS to "forget" any current drive information.**

10. If you get the Disk Insertion dialog box, this time click **Initialize** which will open Disk Utility. If not, open Disk Utility from your System Volume > Applications Folder > Utilities Folder, and format the new volumes. Mac OS X formatting instructions can be found later in this manual.

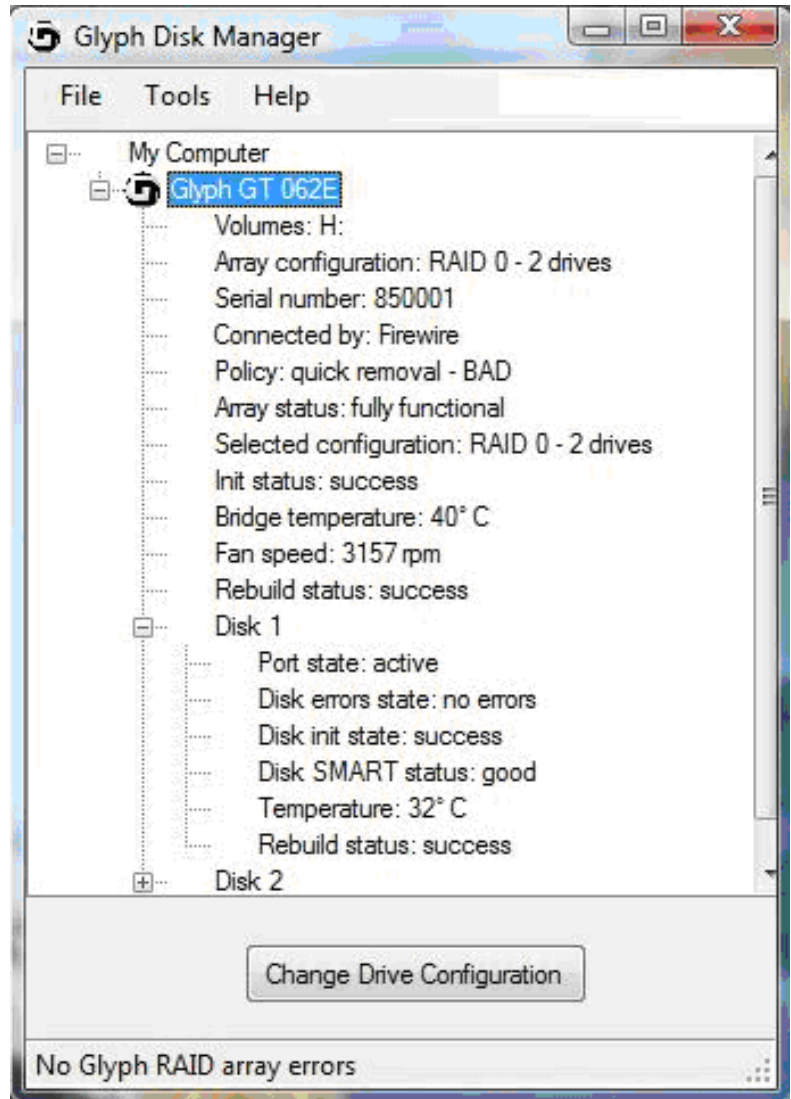
## Glyph Manager Operation in Windows XP, Vista, and Windows 7

Glyph Manager will start automatically and will display a Glyph icon in the lower right corner of the system tray. Right clicking on this icon and then selecting Show will invoke Glyph Manager to the screen.

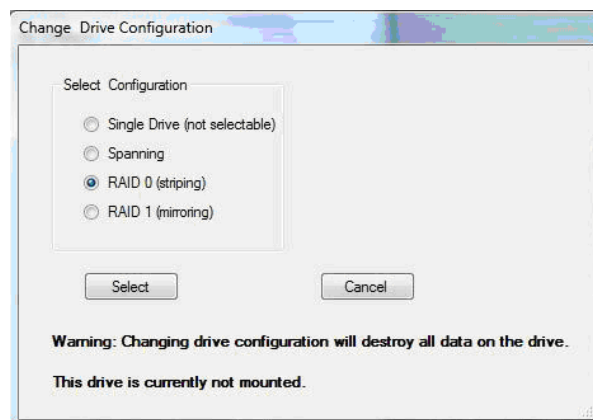
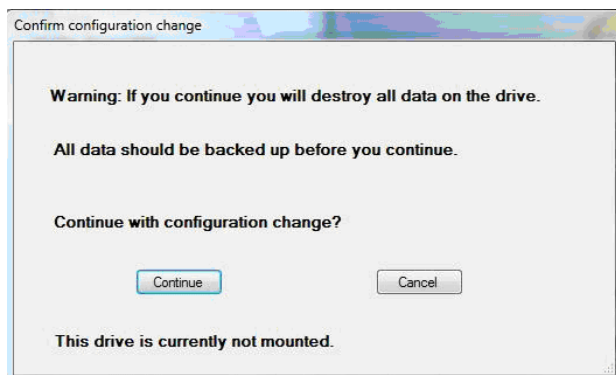
**NOTE:** With Vista, Windows Defender will block the automatic launch of Glyph Manager. Right click on the Windows Defender icon in the system tray to unblock Glyph Manager. With Windows 7, it is necessary to launch Glyph Manager manually using Start/All Programs/Glyph Manager.

When a PortaGig 62 is connected to the computer either by USB, eSATA or FireWire 800, information about the drives within the 062E will be displayed.

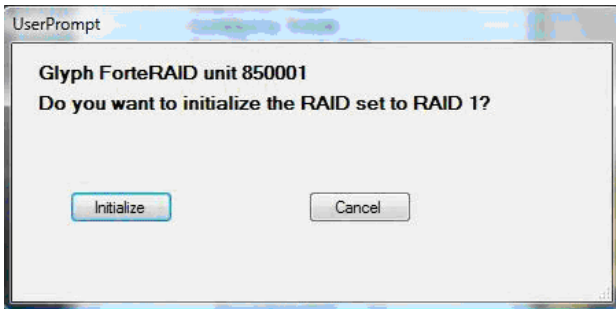
To change the mode of the drives, click the Change Drive Configuration button and select the desired configuration on the following screen.



Select the desired configuration on the following screen and click the **Select** button. Note that the top selection (single drive) is not selectable at this time.



Confirm the changed configuration by clicking **Continue** on the following screen.



Finally, click Initialize to initialize the drive array with the new configuration.

Note: After changing drive mode, it is necessary to utilize the Windows Control Panel/Administrative Tools/Computer Management/Disk Management to format the drives in their new configuration before they will be usable.

The Glyph Manager menu options are as follows:

"File" contains the method to close the program.

"Tools" contains Options with four settings involving the starting and stopping of Glyph Manager.

"Help" contains About Glyph Manager information as well as help files.

Glyph Manager also tells you the Windows policy settings for your PortaGig 62. If the line reads "quick removal – BAD", then you may experience slow write speeds to the Glyph drive. This setting only applies when using FireWire 800. The default Windows settings for FireWire-connected drives can reduce your Glyph drive performance by as much as 90%. This problem is easily corrected, just follow the instructions in the Glyph document [630012\\_WinXP\\_Vista\\_write\\_performance.pdf](#). This document is available on the support pages of our website and also on the Glyph Manager CD.

Known Restrictions in Glyph Manager 4: Windows Vista requires Service Pack 1.

# Glyph Manager Installation

## Glyph Manager Installation in Mac OS X:

Insert the Glyph Manager CD, or to get the latest version of Glyph Manager, go to the support section of [www.glyphtech.com](http://www.glyphtech.com) and download the version for your operating system. The Mac version of Glyph Manager supports Mac OS 10.4 and above. It is a Universal Binary (supports both Intel and PowerPC Macs). You can find your operating system version by going to the Apple Menu and clicking on "About This Mac".

Glyph Manager can run in the background automatically under OS X by using System Preferences/System Accounts/Login Items/Add (+) then selecting Glyph Manager from the Applications folder. Check the "Hide" box to load the Glyph Manager on the Dashboard at login. The above actions are specific to the Account name selected. It is necessary to perform these same steps for each Account name desired to have Glyph Manager automatically load at login.

**Note:** *We recommend that you set Glyph Manager to run in the background because it will alert you to any problems with your PortaGig 62, and allow you to backup your data before any is lost.*

## Glyph Manager Installation in Windows XP , Vista, and 7:

Insert the Glyph Manager CD, or to get the latest version of Glyph Manager, go to the support section of [www.glyphtech.com](http://www.glyphtech.com) and download the version for your operating system. The Windows version of Glyph Manager supports Windows XP and above. Windows Vista must be patched with Service Pack 1 to allow installation of Glyph Manager. If your installation of Vista is configured for automatic updates, Service Pack 1 is automatically downloaded. If it is not, you must download Service Pack 1 from Microsoft.

Double click the file called setup.exe and then accept the End User Licensing Agreement. Next, accept (or change) the target install folder. The installation will create a Start Menu folder by default. Check the box marked "Don't create a Start Menu folder" if a Start Menu folder is not desired. The install routine will NOT create a desktop icon by default, check the box marked "Create a desktop icon" if one is desired. Since there are options to disable this automatic launch of Glyph Manager, it is recommended that at least one of the above options (icon or Start Menu folder) be used to provide a manual way to launch Glyph Manager.

**NOTE:** Glyph Manager will start automatically when the computer is booted (except with Vista and Windows 7. With Vista, Windows Defender will block the automatic launch of Glyph Manager. Right click on the Windows Defender icon in the system tray to unblock Glyph Manager. With Windows 7, it is necessary to launch Glyph Manager manually using Start/All Programs/Glyph Manager.

The final step of the installation provides three options:

View readme.doc, Launch Microsoft .NET Framework Version 2.0, and Launch Glyph Manager  
The readme.doc contains support contact information and should be reviewed.

Glyph Manager requires Microsoft .NET Framework Version 2.0 to be installed. It is recommended that this option be allowed. If .NET Framework Version 2.0 is already installed, the Glyph Manager installation will not attempt to overwrite what's already there. If the installation does detect an existing .NET Framework Version 2.0 already installed, a "Maintenance Mode" dialog box will appear offering the choice to "Repair" or "Uninstall". Neither of these options should be selected and the Cancel button should be clicked. Taking this action will require confirmation by clicking Yes in response to the "Are you sure..." message that follows. Lastly, click Finish in the Setup Cancelled dialog box.

## Mac OS X Formatting Instructions

Since Glyph PortaGig 62 drives come pre-formatted for Macintosh you don't need to format them on installation. If you decide to reformat or partition your drive at a later date, use Disk Utility (supplied with the Mac OS X operating system).

*Caution: This procedure will destroy any data currently on the drive. Before formatting a drive, save any important data it contains.*

1. Open Disk Utility:
  - Double click on your internal hard drive mounted on the desktop
  - Open Applications Folder > Utilities Folder > double click on Disk Utility
2. Select your PortaGig 62 drive(s) from the list on the left. The top entry represents the FireWire device and the entry underneath it represents the volume associated with that device. Click on the top device which will say something like "XXXGB Glyph Technologies".
3. Click the "Erase" tab on the right side of the screen.
4. Choose the desired volume format from the drop-down list. Glyph recommends the default "Mac OS Extended (Journaled)".
5. Click in the "Name" field and type the desired name for the drive. This name will identify the drive on the desktop
6. Click the "Install Mac OS 9 Disk Driver" button if you would like your drive to compatible with OS 9.
7. Click the "Erase" button to erase your drive. Your new drive should automatically mount on the desktop as a Glyph volume.

## Windows 2000 / XP / Vista / 7 Formatting Instructions

1. Right-click My Computer and click Manage.
2. In the Computer Management window, under Storage, click Disk Management.

The Write Signature wizard pops up.

3. Use the wizard to write a signature to the new drive. If you want only one partition we suggest using a primary partition and selecting the maximum size. In most cases you'll want to use NTFS volumes, this is the default for most versions of Windows. Choose FAT32 if you want to use the drives with Windows 98 or ME , or if you want to use the drive with Windows and Mac OS.
4. Formatting will take a few minutes, after which your drive will be ready to use.

## Windows 98 / 98SE Formatting Instructions

1. From your computer's task bar, go to Start > Programs > MS-DOS Prompt.
2. At the prompt, type fdisk and press Enter. You'll see a long message about disk support.
3. Enter Y (type Y and press Enter).
4. You are invited to make a choice. Enter 5 to change the current fixed disk drive. MS-DOS displays the connected disk drives.
5. Enter the number of the disk that has no corresponding drive letter.
6. You are invited to make a choice (same list as in Step 3). Enter 1 to create a primary DOS partition. Your computer verifies the drive's integrity, after which you are asked to choose whether you want to use all the space available.
7. Enter Y to opt for using the maximum available space. Your computer again verifies the drive's integrity.
8. When the drive's integrity has been verified, press ESC (Escape) three times to exit fdisk.
9. At the prompt, type exit.
10. Restart your computer.

Your new drive is now ready to use.

## Mac OS 9 Formatting Instructions

Since Glyph drives come pre-formatted for Macintosh you don't need to format them on installation. If you decide to reformat or partition your drive at a later date, you can use the Erase Disk command in the Mac OS 9 operating system. This command will erase all the data on a volume and create a new file system. Erase disk will not allow you to re-partition a FireWire drive or create a different volume structure than what was previously there.

*Caution: This procedure will destroy any data currently on the drive. Before formatting a drive, save any important data it contains.*

1. Select the volume by clicking on it once in the Finder
2. Go to the Special menu and select Erase Disk... The Erase Disk dialog box opens to verify your decision to erase the disk.
3. In the Name field, enter the new name for the disk or leave the name as it is.
4. In the Format drop-down menu, choose an Extended volume and click "Erase".

## Frequently Asked Questions

Q: My Windows computer doesn't show the drive in My Computer. What's up?

The default format on the PortaGig 62 is for the Macintosh, and Windows doesn't recognize it. Once you have connected the PortaGig 62 to your Windows PC, you have to re-initialize it for use with Windows. For Windows XP/2000/Vista/7, that's going to be NTFS format; for Win98/SE, that will be FAT32 format (Windows XP and 2000 can also read FAT32). Detailed instructions for re-initializing your drive are on the Glyph web site, or you may choose to follow the quick Windows formatting directions in the previous section.

Q: My Macintosh OS X computer shows the drive on the Desktop but it says I can't write to it. What's up?

If you have formatted the PortaGig 62 for Windows (NTFS), Mac OS X will recognize it as an NTFS drive, but can only read from it and can't write to it. Once you have connected the PortaGig 62 to your Mac OS X computer, you should re-initialize it for use with Macintosh. Instructions for re-initializing your drive are on the Glyph web site.

Q: How do I know if I have the correct version of Glyph Manager?

To get the latest version of Glyph Manager, go to the support section of [www.glyphtech.com](http://www.glyphtech.com) and download the version for your operating system.

Q: Do I need to have Glyph Manager installed to use the PortaGig 62?

No, Glyph Manager is used for configuration and monitoring only. It is required to change drive configuration or monitor drive health. It is not necessary to install Glyph Manager, but it is recommended.

Q: Do I need any drivers to use the PortaGig 62?

No drivers are required to read and write to the drive using eSATA, FireWire or USB. A driver is required to use Glyph Manager to change configuration or monitor drive health. All necessary drivers are installed as part of the Glyph Manager installation.

## Frequently Asked Questions (continued)

Q: Do I need RAID software?

RAID software is not needed because the RAID intelligence is built into PortaGig 62 hardware. To configure the drive mode, use the Glyph Manager software to switch drive modes, and format the drive. Instructions for re-initializing your drive are included in this manual.

Q: I'm using Windows 2000 and/or XP 32-bit and my volume is bigger than 2TB. Why does my GT 062E not show up correctly?

Older versions of Windows, such as 2000 and XP 32-bit, use Master Boot Record which doesn't support volumes larger than 2TB. If you want to use Windows 2000 and/or XP 32-bit, you'll need to use RAID 1 which will present a volume that is less than 2TB.

Q: I'm still running Mac OS 9 or Win/ME. Can I still use the PortaGig 62?

Yes. You can connect the USB port on the drive to your OS 9 or Win/ME machine. You cannot run Glyph Manager to change configuration or monitor drive status, however the PortaGig 62 will run in the last drive mode that it was set to.

Q: What are the differences between FireWire 800 and FireWire 400?

Speed and Protocol. FireWire 800 has a max transfer rate of 800 Mb/sec (about 100 MB/sec peak). FireWire 400 has a max transfer rate of 400 Mb/sec (about 50 MB/sec peak). The higher bus speed helps with things like large file copies and RAID, where FireWire 400 bus speed can be a limiting factor. FireWire 800 uses IEEE-1394b "Beta" protocol; FireWire 400 uses IEEE-1394a "DS" protocol.

For more information, be sure to check out the Glyph website at [www.glyphtech.com](http://www.glyphtech.com). There is information posted there concerning FireWire 800/1394B, as well as information about the rest of Glyph's product line.

Q: How can I make my drive work across Windows and Mac platforms?

The only file system that works well between Mac OS and Windows is FAT 32, otherwise known as MS-DOS file system. This is a native Windows file system, but Mac OS 9 and X will mount FAT 32 volumes. Mac OS 9 and 10.1.x would only work with FAT 32 partitions less than 32GB. While Mac OS 10.2.x increased that limitation to 128GB, it wasn't until Mac OS 10.3.x that you could use FAT 32 partitions of any size. Mac OS 10.3.x can additionally read NTFS volumes but cannot write to them. See next question for information specific to Pro Tools software.

Q: How can I use my drive with Windows and Mac Pro Tools systems?

If you are trying to use a hard drive between Windows and Mac Pro Tools systems, FAT 32 will not work for you because a Mac running Pro Tools can only work with HFS formatted volumes. Your best option is to install MacDrive ([www.mediafour.com](http://www.mediafour.com)) on your Windows machine to mount your Mac formatted volumes.