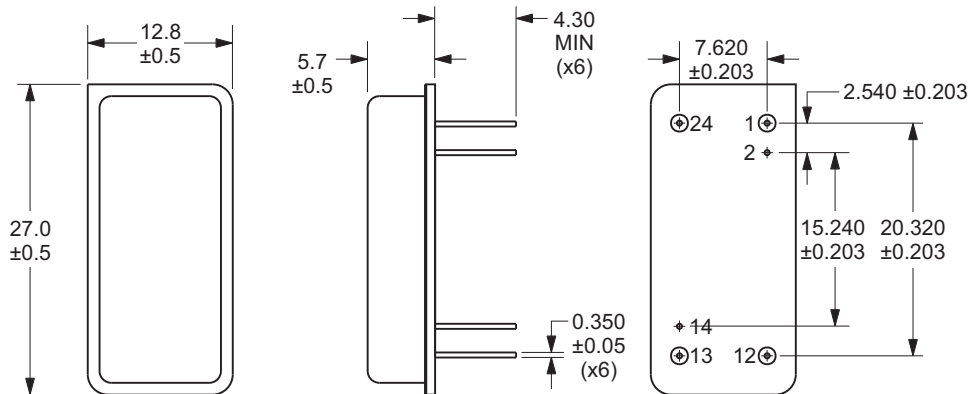


## STANDARD SPECIFICATIONS

Parameter	Condition	Minimum	Typical	Maximum
Center Frequency (MHz):	-	211.57	211.65	211.73
Insertion Loss (dB):	-	-	22.80	25.00
Passband Ripple (dB):	-	-	0.60	1.00
-1dB Bandwidth (MHz):	-	-	5.40	-
-1.5dB Bandwidth (MHz):	-	5.45	5.48	-
-3dB Bandwidth (MHz):	-	-	5.67	-
-38dB Bandwidth (MHz):	-	-	6.61	6.70
-40dB Bandwidth (MHz):	-	-	6.63	-
-45dB Bandwidth (MHz):	-	-	6.71	7.50
Absolute Delay(μSec):	-	-	2.36	2.37
Ultimate Rejection (dB):	-	40.00	41.00	-
Phase Linearity (deg):	Fo ±2.5MHz	-	4.00	-
Group Delay Variation (nSec):	Fo ±2.5MHz	-	80.00	-
Operating Temperature Range (°C):	-	-	25	-
Temperature Coefficient (kHz/°C):	-	-	0.212	-
Termination Source Impedance (Ohms):	-	-	220	-
Termination Load Impedance (Ohms):	-	-	220	-

**Comments:** Unless otherwise specified, all of the above specifications are under the following conditions:  
Operating Temperature = 25°C

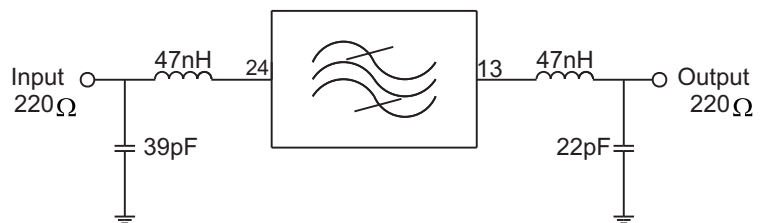
## MECHANICAL DIMENSIONS



Pin	Function
1	Ground
2	Ground
12	Ground
13	Output
14	Ground
24	Input

ALL DIMENSIONS  
IN MILLIMETERS

## MATCHING NETWORK DIAGRAM

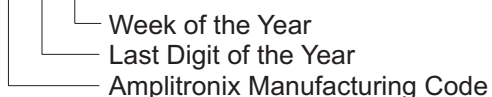


## MARKING GUIDE

(Line #1) **AMPLITRONIX**

(Line #2) **ABFF074D**

(Line #3) **XX Y ZZ**



Part Number: ABFF074D

3545-B Cadillac Avenue • Costa Mesa, CA 92626-1401 • (714) 918-4752 • Fax (714) 918-4760