

FR3U

3U Rack Mounting Frame

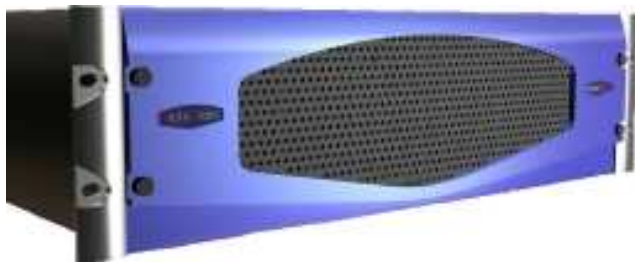
INSERTERS

SWITCHES

CONVERSION

KEYERS

MIXERS



Holds up to 15 cards

Optional dual PSU

Optional control and alarm signalling

Integrated cooling

The FR3U frame offers a flexible housing for our new Series 200 range of digital video interface products. Its many features make it ideal for high reliability applications in broadcast systems. The Series 200 modules are eurocard size and plug into the front of the frame. Different types of modules may be mixed within the same frame. The rear of the frame is may be fitted with either BNC or D-type connectors depending on the relevent modules fitted. It is possible to hot-swap modules and PSUs.

- Physical:** 3U high, standard rack mounting width, 420mm deep.
- Power:** A power module provides power for up to fifteen Series 200 cards. Input voltage can be 90-250V AC. Max Power is 125W.
- Cooling:** Two 80mm fans mounted at the front ensure sufficient cooling of the modules. Air flow is from the front of the unit to the rear.
- Connections:** The Series 200 cards plug into the front of the case. A standard DIN41612 connector on the boards takes all connections to the rear.
- Control:** Provision has been made to bus alarm or control signals to a common connector or to our CPU card for remote control. There are also power fail indicator outputs.
- Ordering:**
- | | |
|---------|--|
| FR3U-10 | 1U rack mounting frame with single PSU and 15 card slots |
| FR3U-20 | 1U rack mounting frame with dual PSU and 15 card slots |
| -CB | Optional Control Bus wiring for 3U frame |

MicroVideo

Copley Hill Farm
Babraham
Cambridge
England, CB22 3GN
t: +44 (0) 1223 834119
f: +44 (0) 1223 834471
w: www.microvideo.co.uk