

# Medical Series

# Product Specifications

ANZ#: Z035a, August 14, 2002

## Modular Power System Switch-Mode Power Supply

Total Power	700 / 1K Watts
Input Voltages	85-264 VAC
Number of Outputs	One through Eight

### SPECIAL FEATURES

- Medical Application w/ Full Certifications
- Modular Design & Redundant Operation
- 34 x DC modules from 1.5VDC to 60VDC
- Active PFC meet EN61000-3-2 requirement
- Overload and short circuit protection

### ELECTRICAL SPECIFICATIONS

Input range	85 to 264 VAC, 120 ~ 350VDC
Frequency	47 to 440 Hz
Power Factor	0.99 typical
Inrush current	40.0 Amps maximum at 115VAC
Input Fuse	MPS10: 12A ; MPS16: 20A
Efficiency	75% typical at 120VAC and maximum load
Turn-on Time	AC on 1.5sec. typ. ; Inhibit/Enable 150ms typ.
Leakage Current	300uA max. @ 240VAC
EMI filtering	FCC part 15J class B, CISPR 22 class B
Maximum power	250W
Voltage regulation	±3% @constant voltage mode
Hold up time	20.0mS at 120VAC and full load
Protection	Over current protection Short circuit and over voltage protection: output short circuit, auto recovery

### ENVIRONMENTAL

Operating temperature:	0 to 50 °C
Storage temperature:	-40 to 85 °C
Storage humidity(non-condensed)	5% to 95%
Vibration / Shock:	Mil-Hdbk 810E
Altitude:	10,000ft. max.
Acoustics:	<45dbA @ 1meter
Cooling	Forced air, Internal
MTBF:	>250,000 Hours at full load and 25°C ambient conditions

### SAFETY

<b>UL/CUL</b>	UL2601-1 + CUL
<b>CB</b>	TUV EN60601-1-1
<b>CE</b>	

### AVAILABLE DC/DC OUTPUT MODULE SELECTIONS

#### SINGLE OUTPUT MODULES

Module Code	Volts (V)	Amps(Nom.)	Total (W)
A	1.5	50.0	75
B	2.0	50.0	100
C	2.2	50.0	110
D	3.0	50.0	150
E	3.3	50.0	165
F	5.0	40.0	200
G	5.2	40.0	208
H	6.0	34.0	204
I	9.0	21.0	189
J	10.0	20.0	200
K	11.0	18.0	194
L	12.0	17.0	204
M	14.0	15.0	210
N	15.0	14.0	210
O	18.0	12.0	216
P	20.0	10.0	200
Q	24.0	9.0	216
R	28.0	7.5	210
S	30.0	7.0	210
T	33.0	6.4	211
U	36.0	6.0	216
V	42.0	5.0	210
W	48.0	4.5	216
X	54.0	4.0	216
Y	56.0	3.8	213
Z	60.0	3.5	210

#### TRIPLE OUTPUT MODULES

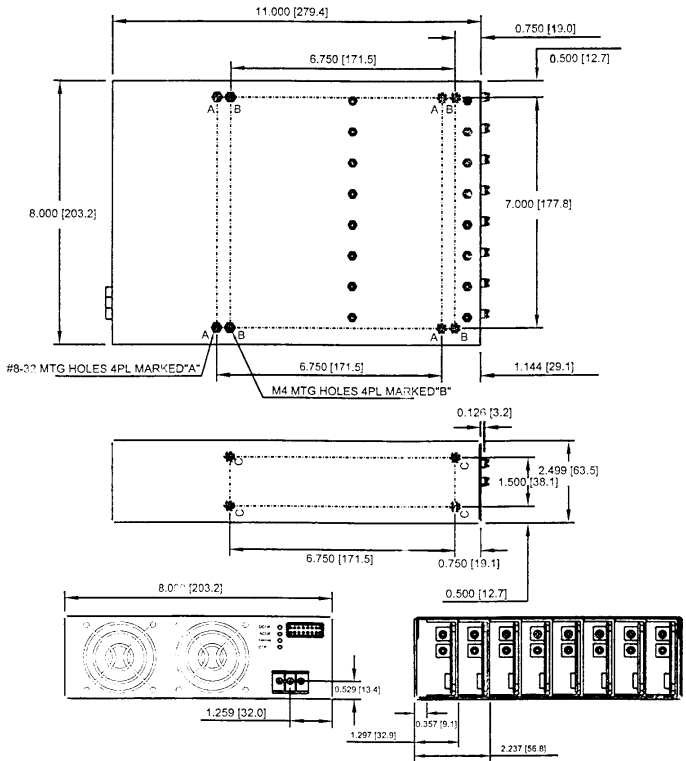
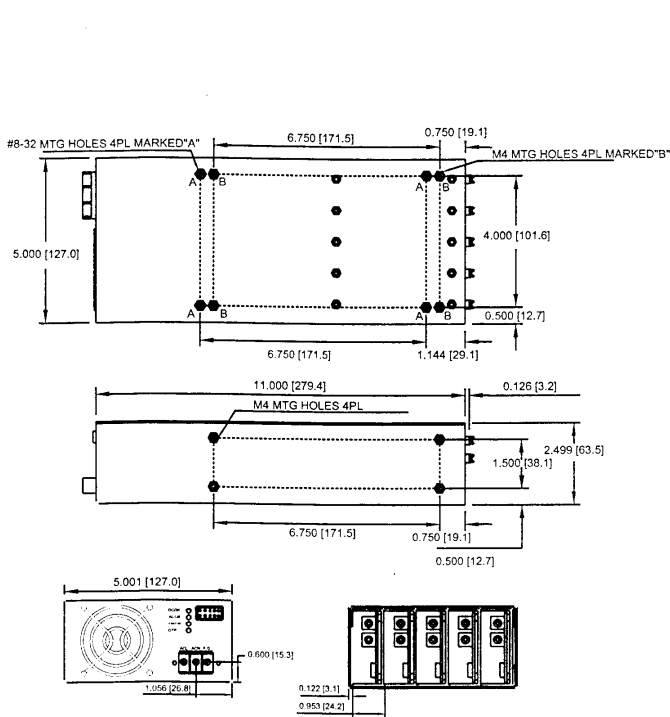
Module Code	Volts (V)	Amps(Nom.)	Total (W)
1	5.0	15.0 (20.0 pk)	100
	12.0	9.0 (14.0 pk)	
2	+ 5.0	1.0	100
	5.0	15.0 (20.0 pk)	
	12.0	9.0 (14.0 pk)	
3	-5.0	1.0	100
	5.0	15.0 (20.0 pk)	
	12.0	9.0 (14.0 pk)	
4	+12.0	1.0	100
	5.0	15.0 (20.0 pk)	
	12.0	9.0 (14.0 pk)	
5	-12.0	1.0	100
	5.0	15.0 (20.0 pk)	
	24.0	4.0 (14.0 pk)	
6	+5.0	1.0	100
	5.0	15.0 (20.0 pk)	
	24.0	4.0 (14.0 pk)	
7	-5.0	1.0	100
	5.0	15.0 (20.0 pk)	
	24.0	4.0 (14.0 pk)	
8	+12.0	1.0	100
	5.0	15.0 (20.0 pk)	
	24.0	4.0 (14.0 pk)	
	-12.0	1.0	



# MECHANICAL DRAWINGS

## MPS10 700W/1000W

## MPS16 1000W/1600W



Note: All dimension are in mm.

# ORDERING INFORMATION

