
eSW4511

**Bidirectional
Motor Driver**

**Product
Specification**

DOC. VERSION 1.0

ELAN MICROELECTRONICS CORP.


December 2008



Trademark Acknowledgments:

IBM is a registered trademark and PS/2 is a trademark of IBM.

Windows is a trademark of Microsoft Corporation.

ELAN and ELAN logo  are trademarks of ELAN Microelectronics Corporation.

Copyright © 2008 by ELAN Microelectronics Corporation

All Rights Reserved

Printed in Taiwan

The contents of this specification are subject to change without further notice. ELAN Microelectronics assumes no responsibility concerning the accuracy, adequacy, or completeness of this specification. ELAN Microelectronics makes no commitment to update, or to keep current the information and material contained in this specification. Such information and material may change to conform to each confirmed order.

In no event shall ELAN Microelectronics be made responsible for any claims attributed to errors, omissions, or other inaccuracies in the information or material contained in this specification. ELAN Microelectronics shall not be liable for direct, indirect, special incidental, or consequential damages arising from the use of such information or material.

The software (if any) described in this specification is furnished under a license or nondisclosure agreement, and may be used or copied only in accordance with the terms of such agreement.

ELAN Microelectronics products are not intended for use in life support appliances, devices, or systems. Use of ELAN Microelectronics product in such applications is not supported and is prohibited.

NO PART OF THIS SPECIFICATION MAY BE REPRODUCED OR TRANSMITTED IN ANY FORM OR BY ANY MEANS WITHOUT THE EXPRESSED WRITTEN PERMISSION OF ELAN MICROELECTRONICS.



ELAN MICROELECTRONICS CORPORATION

Headquarters:

No. 12, Innovation Road 1
Hsinchu Science Park
Hsinchu, TAIWAN 308
Tel: +886 3 563-9977
Fax: +886 3 563-9966
<http://www.emc.com.tw>

Hong Kong:

Elan (HK) Microelectronics Corporation, Ltd.
Flat A, 19F., World Tech Centre
95 How Ming Street, Kwun Tong
Kowloon, HONG KONG
Tel: +852 2723-3376
Fax: +852 2723-7780

USA:

Elan Information Technology Group (U.S.A.)
PO Box 601
Cupertino, CA 95015
U.S.A.
Tel: +1 408 366-8225
Fax: +1 408 366-8225

Shenzhen:

Elan Microelectronics Shenzhen, Ltd.
3F, SSMEC Bldg., Gaoxin S. Ave. I
Shenzhen Hi-tech Industrial Park
(South Area), Shenzhen
CHINA 518057
Tel: +86 755 2601-0565
Fax: +86 755 2601-0500
elan-sz@elanic.com.cn

Shanghai:

Elan Microelectronics Shanghai, Ltd.
#23, Zone 115, Lane 572, Bibo Rd.
Zhangjiang Hi-Tech Park
Shanghai, CHINA 201203
Tel: +86 21 5080-3866
Fax: +86 21 5080-4600
elan-sh@elanic.com.cn

Contents

1	General Description	1
2	Features	1
3	Pin Assignment	1
4	Pin Description	1
5	Absolute Maximum Ratings	2
6	Electrical Characteristics	2
7	Operation Mode	3
8	Application Circuits	3
8.1	Single Motor Drive – Bidirectional	3
8.2	Two-Motor Drive with On-Off	4



Specification Revision History

Doc. Version	Revision Description	Date
1.0	Initial version	2008/12/26

1 General Description

The **eSW4511** is a high-performance bidirectional motor driver IC, designed with LSI technology and specifically suitable for low-voltage, high-current product applications. Device reliability and flexibility is enhanced with its built-in input pull down resistance and four modes of motor driving functions, i.e., Forward/Reverse/Brake/Stop. Along with its combined features, it has the advantage of low power consumption.

2 Features

- Low operating voltage: 2.0V ~ 5.5V
- Maximum of 1.1A High current drain at standby mode
- Built-in Input pull down resistance
- Provides four modes of motor driving: Forward/Reverse/Brake/Stop

3 Pin Assignment

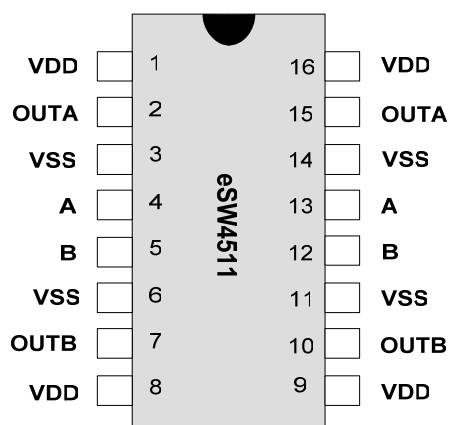


Figure 3-1 eSW4511 16-Pin PDIP

4 Pin Description

Symbol	I/O	Pin No.	Function
VDD	I	1, 8, 9, 16	Positive power supply
VSS	I	3, 6, 11, 14	Negative power supply
A	I	4, 13	Input Signal A
B	I	5, 12	Input Signal B
OUTA	O	2, 15	Motor Driver Output A
OUTB	O	7, 10	Motor Driver Output B

5 Absolute Maximum Ratings

Items	Symbol	Min	Max	Unit
Supply Voltage	$V_{DD}-V_{SS}$	-0.3	+5.5	V
Input Voltage	V_{IN}	$V_{SS}-0.3$	$V_{DD}+0.3$	V
Operating Temperature	T_{OP}	-20.0	+70.0	°C
Storage Temperature	T_{STG}	-55.0	+125.0	°C

6 Electrical Characteristics

Operating Temperature = 25°C

Items	Symbol	Min.	Typ.	Max.	Unit	Condition
Operating Voltage	V_{DD}	2.0	3.0	5.5	V	-
Standby Current	I_{DDS}	-	1	2	μA	$V_{DD}=3V, A,B=V_{SS}$
			2	4	μA	$V_{DD}=4.5V, A,B=V_{SS}$
Operating Current	I_{DDO}	-	7	100	μA	$V_{DD}=3V, \text{no load}$
			17	100	μA	$V_{DD}=4.5V, \text{no load}$
A/B Input Current	I_{IN}	-	6	12	μA	$V_{DD}=3V, V_{IN}=V_{DD}$
			15	30	μA	$V_{DD}=4.5V, V_{IN}=V_{DD}$
A/B Input High Voltage	V_{IH}	2.4	-	V_{DD}	V	$V_{DD}=3V$
		3.2	-	V_{DD}	V	$V_{DD}=4.5V$
A/B Input Low Voltage	V_{iL}	V_{SS}	-	0.6	V	$V_{DD}=3V$
		V_{SS}	-	1.2	V	$V_{DD}=4.5V$
OUTA-OUTB Load Current	I_O	-	-	1100	mA	$V_{DD}=5.5V_{max}$
				1000	mA	$V_{DD}=4.5V$
				600	mA	$V_{DD}=3V$
Output Low Voltage	V_{OL}	-	0.15	0.3	V	$V_{DD}=3V, I_{OL}=100mA$
			0.10	0.3	V	$V_{DD}=4.5V, I_{OL}=100mA$
Output High Voltage	V_{OH}	$V_{DD}-0.3$	2.8	-	V	$V_{DD}=3V, I_{OH}=100mA$
		$V_{DD}-0.3$	4.4	-	V	$V_{DD}=4.5V, I_{OH}=100mA$
Output Rise Time	T_{RS}	-	3.8	10	ns	$V_{DD}=3V, \text{no load}$
			2.8	10	ns	$V_{DD}=4.5V, \text{no load}$
Output Fall Time	T_{FL}	-	3.2	10	ns	$V_{DD}=3V, \text{no load}$
			4.0	10	ns	$V_{DD}=4.5V, \text{no load}$
Input to Output Response Time	T_{RP}	-	6	15	ns	$V_{DD}=3V, \text{no load}$
			3.5	10	ns	$V_{DD}=4.5V, \text{no load}$

7 Operation Mode

Input A	Input B	OutA	OutB	Mode
L	L	L	L	Stop
H	L	H	L	Forward
L	H	L	H	Reverse
H	H	H	H	Brake

8 Application Circuits

8.1 Single Motor Drive – Bidirectional

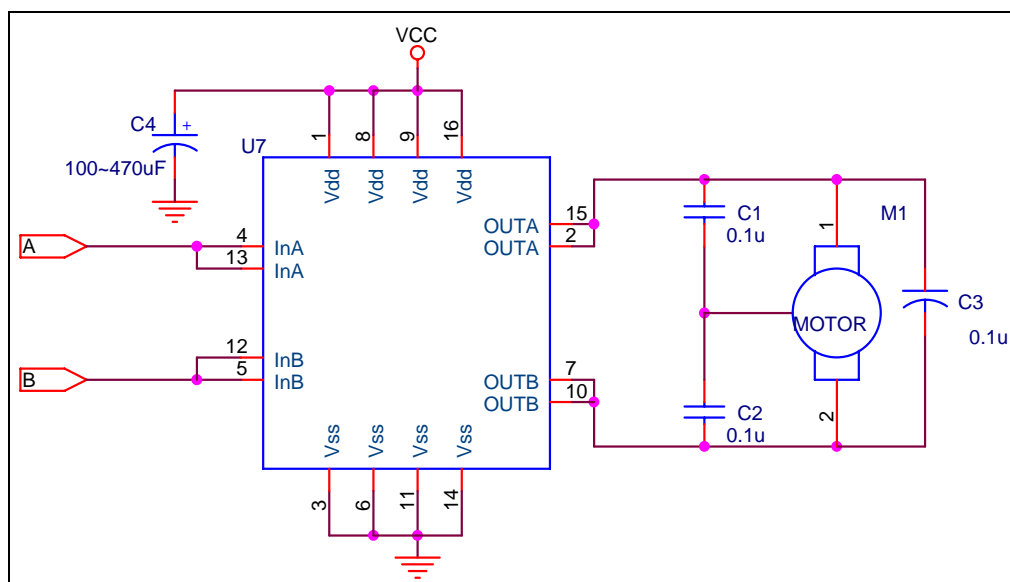


Figure 8-1 eSW4511 Single Motor Drive - Bidirectional Application Circuits

8.2 Two-Motor Drive with On-Off

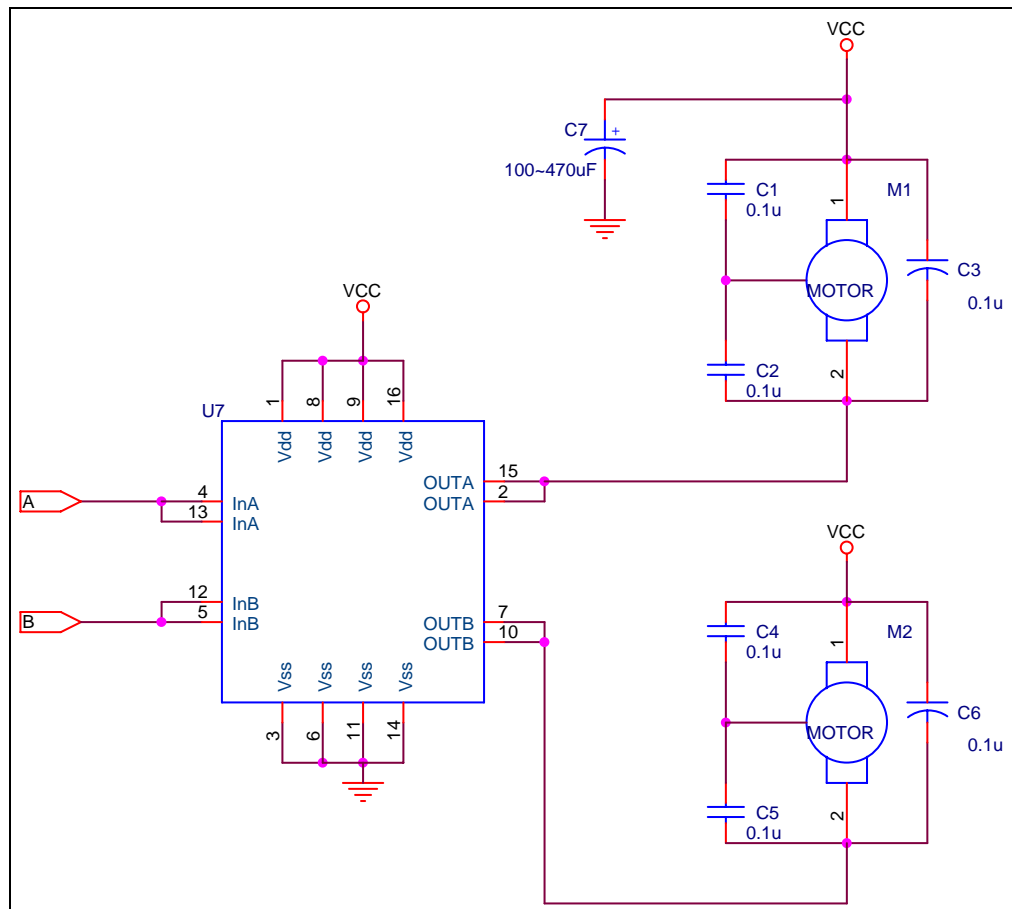


Figure 8-2 eSW4511 Two-Motor Drive with On-Off Application Circuits