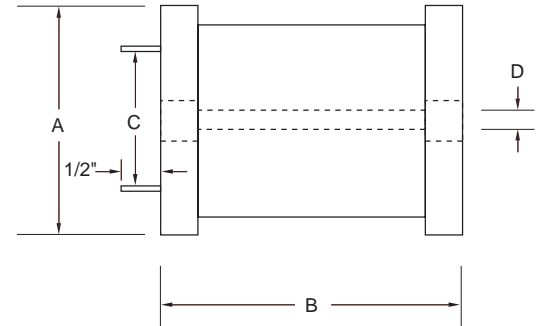




MAXIMUM PHYSICAL DIMENSIONS:			
	A	B	C
DC1	.660	.840	.45 +/- .03
DC2	.825	.840	.60 +/- .05
DC3	1.1	.840	.75 +/- .05
DC4	1.6	1.10	1.125 Nominal
D= Clearance Hole For 4/ 40 Screw			



Specifications for larger sizes on page 19

- The use of high saturation flux density ferrite drum cores make these inductors ideal for use in switching power supply applications.

APPLICATIONS

- Power Supplies
- Switching Regulators
- SCR and Triac Controls
- RF Suppression
- Filters
- Battery Chargers
- Generators

Wilco Part Number	L uh	Max. DCR (Ohms)	Saturation Current (DC Amps)	Rated Current (AC Amps)
DC1-10G	1.0	.003	87.0	9.0
DC1-39G	3.9	.006	36.0	9.0
DC1-68G	6.8	.008	26.0	9.0
DC1-100	10.0	.010	21.2	9.0
DC1-150	15.0	.015	17.5	7.2
DC1-220	22.0	.020	15.8	5.5
DC1-330	33.0	.040	13.2	4.0
DC1-470	47.0	.062	11.0	2.8
DC1-680	68.0	.077	8.9	2.8
DC1-101	100.0	.095	7.5	2.8
DC1-121	120.0	.127	5.8	2.0
DC1-151	150.0	.181	5.6	1.6
DC1-221	220.0	.240	4.3	1.6
DC1-331	330.0	.336	3.8	1.3
DC1-471	470.0	.636	3.2	0.8
DC1-561	560.0	.696	2.9	0.8

Notes:

- Saturation current lowers inductance 5%
- Values below 10uH +/- 20%
- Inductance +/- 10% measured at 1 KHz
- Leads for PC mounting tinned to within 1/16" of body
- Non-listed values available on request
- Coils finished with sleeving (Polyolefin shrink tube)
- Center hole for mechanical mounting
- Values below 10uH +/- 20%

Wilco Corporation

6451 Saguro Ct.
Indianapolis, IN 46268
Hotline 800•611•2343
Fax 317•293•9462
www.wilcocorp.com