

QUALITY COILS SINCE 1946

tel: 516-746-2310 fax: 516-742-2416
 email: caddell-burns@erols.com
 258 East Second Street
 Mineola, New York 11501-3508

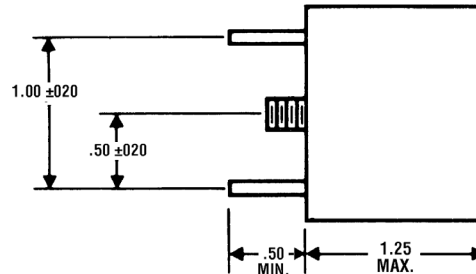
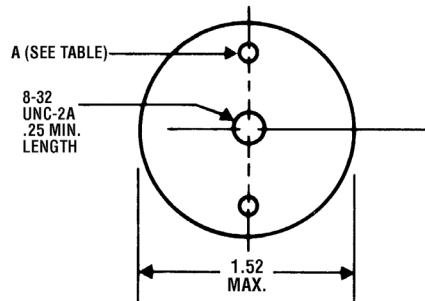
RoHS Compliant Information

Price List



HIGH CURRENT CHOKES

TYPE 7000 10 μ H - 10mH 10% Tolerance



NOTES:

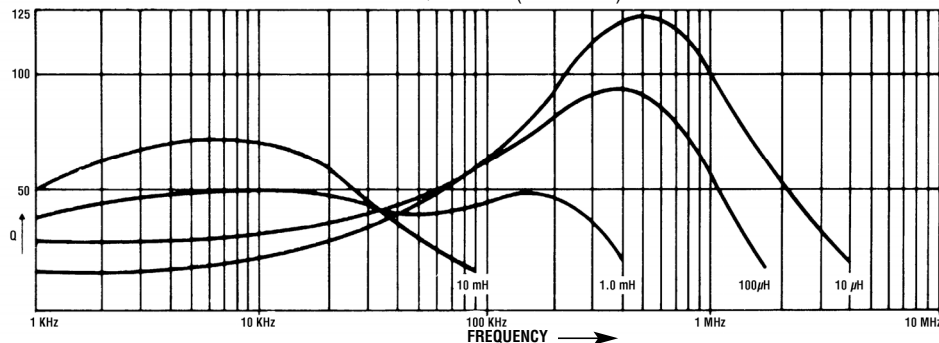
1. INDUCTANCE measured on QuadTech/GenRad 1659 RLC Digibridge at 1.0 KHz.
2. CURRENT RATING (Rated IDC) is based on 3.0 watts power dissipation for approximately 20°C temperature rise. Depending on the application, these units may be operated at up to twice the rated current.
3. INCREMENTAL CURRENT (INCR I) is the minimum current at which the inductance will be decreased by 5% from its initial (zero-DC) value.
4. DIELECTRIC WITHSTANDING VOLTAGE (winding to case mounting stud) — 500 VRMS
5. OPERATING TEMPERATURE RANGE: -55° to +105°C.
6. MATERIALS:
 Core Form: Ferrite
 Magnet Wire: Per FED SPEC J-W-001177/9
 Leads: Bare tinned copper.
 Mounting Stud: 18-8 stainless steel.
 Case: Epoxy encapsulated.
7. Marking — Printed with Caddell-Burns Part Number

STANDARD VALUES: (other values available on special order)

Part No.	Nominal Inductance	Max. DCR Ohms	Min. SRF MHz	Rated IDC Amps (2)	INCR I Amps (3)	A Lead Size AWG
7000-01	10 μ H	.004	9.0	27	65	10
7000-02	12	.004	7.2	27	58	10
7000-03	15	.005	5.2	24	52	10
7000-04	18	.006	4.4	22	44	11
7000-05	22	.007	3.8	21	41	11
7000-06	27	.008	3.5	19	38	12
7000-07	33	.011	2.8	17	33	13
7000-08	39	.012	2.7	16	31	13
7000-09	47	.013	2.5	15	28	13
7000-10	56	.014	2.4	14	26	13
7000-11	68	.017	2.1	13	23	13
7000-12	82	.019	2.0	13	21	13
7000-13	100	.022	1.8	12	19	13
7000-14	120	.027	1.4	11	17	14
7000-15	150	.030	1.3	10	15	14
7000-16	180	.039	1.1	8.8	14	15
7000-17	220	.054	.90	7.5	13	16
7000-18	270	.060	.85	7.1	12	16
7000-19	330	.070	.75	6.5	11	16

Part No.	Nominal Inductance	Max. DCR Ohms	Min. SRF MHz	Rated IDC Amps (2)	INCR I Amps (3)	A Lead Size AWG
7000-20	390 μ H	.090	.65	5.8	10	17
7000-21	470	.10	.62	5.5	8.8	17
7000-22	560	.11	.56	5.2	8.0	17
7000-23	680	.14	.51	4.6	7.5	18
7000-24	820	.17	.49	4.2	6.7	18
7000-25	1.0 mH	.22	.43	3.7	6.0	19
7000-26	1.2	.25	.37	3.5	5.4	19
7000-27	1.5	.29	.36	3.2	4.8	19
7000-28	1.8	.32	.33	3.1	4.4	19
7000-29	2.2	.44	.31	2.6	4.0	20
7000-30	2.7	.50	.27	2.4	3.6	20
7000-31	3.3	.69	.23	2.1	3.2	21
7000-32	3.9	.75	.21	2.0	3.0	21
7000-33	4.7	1.0	.20	1.7	2.8	22
7000-34	5.6	1.1	.18	1.6	2.6	22
7000-35	6.8	1.3	.17	1.5	2.3	22
7000-36	8.2	1.6	.14	1.4	2.1	23
7000-37	10	1.8	.13	1.3	1.9	23

TYPICAL Q CURVES (TYPE 7000)



CADDELL-BURNS DOES NOT SELL THRU DISTRIBUTORS. ALL SALES ARE DIRECT.