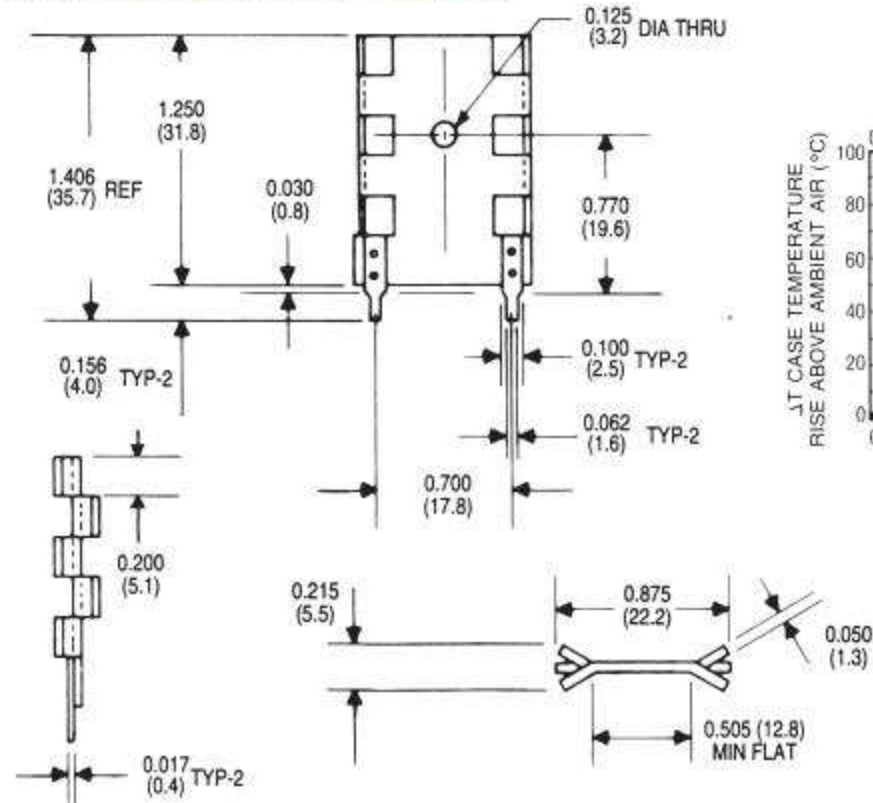


wakefield-vette

| Standard P/N | Height Above PC Board in. (mm) | Maximum Footprint in. (mm) | Thermal Performance at Typical Load | | Weight lbs. (grams) |
|--------------|--------------------------------|----------------------------|-------------------------------------|-------------------|---------------------|
| | | | Natural Convection | Forced Convection | |
| 288-1ABE | 1.250 (31.8) | 0.875 (22.2) x 0.215 (5.5) | 85°C @ 4W | 12°C/W @ 200 LFM | 0.0057 (2.59) |

MECHANICAL DIMENSIONS 288 SERIES



NATURAL AND FORCED CONVECTION CHARACTERISTICS

