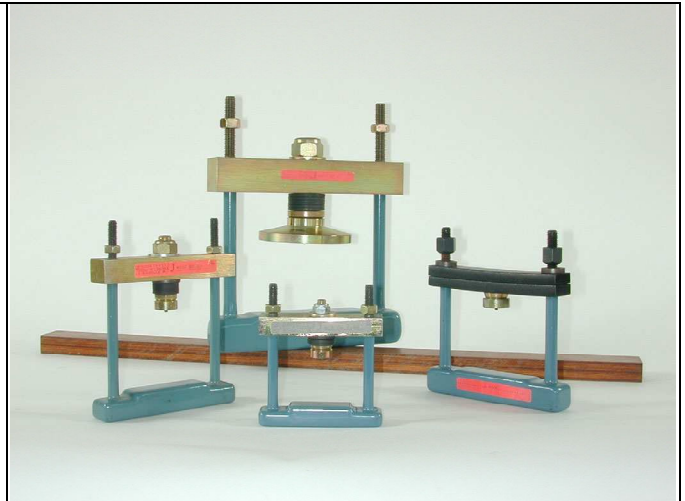


CLAMP W

CLAMP WITH SPRING WASHERS

- ✓ Insulation by epoxy layers
- ✓ Pressure from 300 to 4500 daN
- ✓ Clamped thickness from 10 to 300 mm
- ✓ Dielectric strength :
 - 4000 V with single insulation
 - 6000 V with double insulation
- ✓ Large range with various fixing centres
78.6 – 102 – 118 – 140 – 180
other : consult us



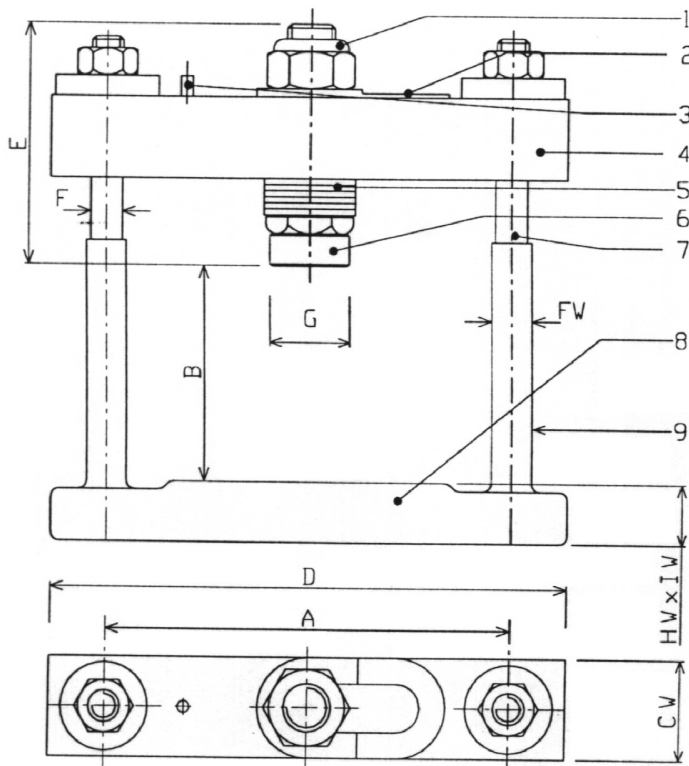
Our technology :

- ✓ *A regular pressure: a ball inserted under the multi-axial clamp enables to apply a regular force according to the axis of the component.*
- ✓ *A precise clamping : a test washer is released when the force is reached.*
- ✓ *The variation of the force applied to the component and due to the thermic expansion, is controlled by stacking elastics elements like spring washers.*
- ✓ *The standard clamps are defined for a variation of the force of 10% maximum, when correctly used on a power stack.*

CASE

CLAMP : TYPE W : EPOXY COAT
INSULATION ON THE BACK PLATE SIDE

Max. nominal clamping force of 4500 daN



Dimensions :

- A – Fixing centres
- B – Clamped thickness
- CW – Maximum breadth of the head
- D – Over all length
- E – Maximum height of the head
- FW – \varnothing of coated straps
- G – \varnothing of grommets
- HW – Back plate height
- IW – Back plate breadth

Description :

- 1 – Autoblocking nut
- 2 – Test washer (1)
- 3 – Cotter for test washer positioning
- 4 – Clamp
- 5 – Spring washers
- 6 – Ball link
- 7 – Strap
- 8 – Back plate
- 9 – Epoxy coat

(1) : Test washers by stages is replaceable by a round test washer

DIMENSIONS

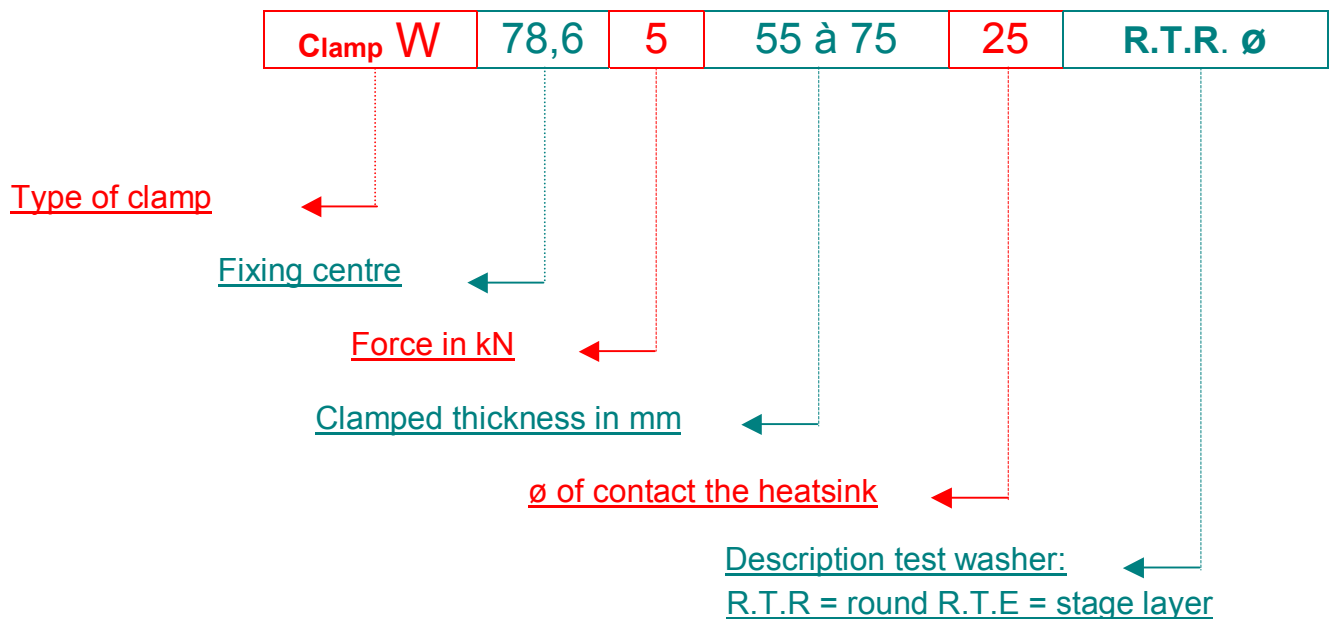
max. \varnothing component mm	Nominal clamping force daN	A mm	B mm	CW mm	D mm	E mm	FW mm	G mm	HW mm	IW mm	J mm
40 – 42	300 à 1500	78,6	10 à 300 mm	26	110	see table on page 4	10,5	25	17,6	27,5	50
57 – 60 74 – 76	700 à 2200 1500 à 2300	102		26	135		10,5	25	23	27,5	50
74 – 76 102	1500 à 2600 2500 à 3500	118		40	145		12,5	40	27	27,5	60
102 - 110	2500 à 4500	140		40	180		12,5	40	28,5	42	60
120 - 150	4000 à 6000	180		60*	225		15*	60	28,5*	42*	80

* : Values given for a nominal clamping force of 4500 daN

INSULATION CHARACTERISTICS

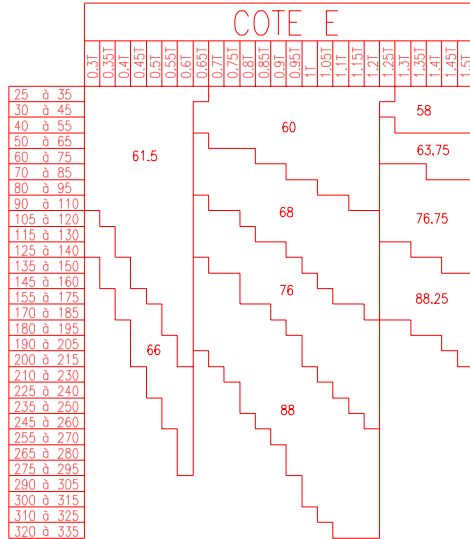
Mains voltage	Insulation	Comments
< 500 V	single	epoxy coated steel straps
1000 V – 1500 V	double	epoxy coated steel straps + back plate of thickness 5 mm + insulating tubes of thickness 1 mm

CODIFICATION

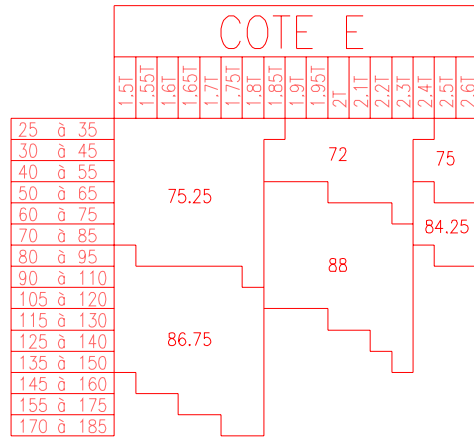


Value of E

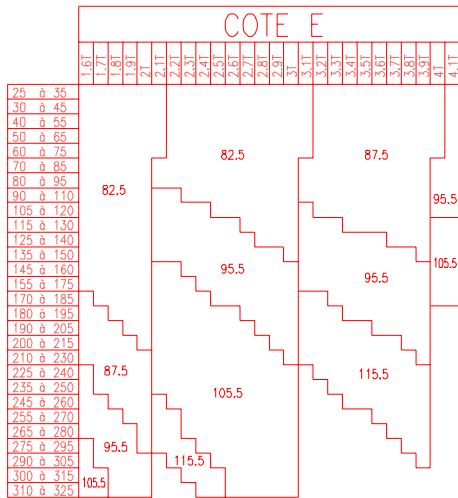
Fixing centre 78,6



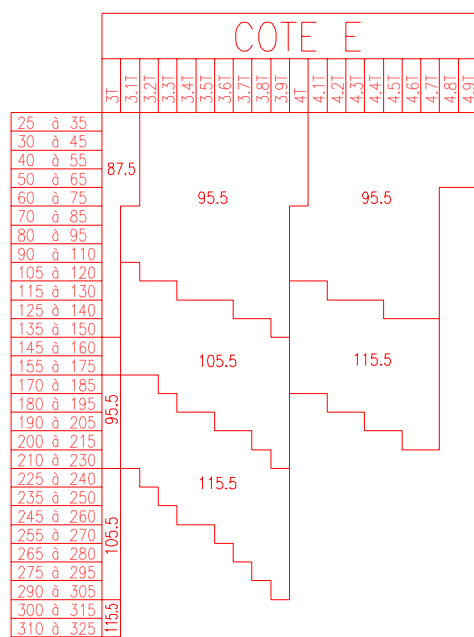
Fixing centre 102



Fixing centre 118



Fixing centre 140



CAUTION : ARCEL reserves the right to make modifications to its technical data and product specifications at any time without prior notice. These documents have no contractual value

For more information :

ARCEL
 2, rue des Aulnes
 Z.I. du Tronchon
 F-69410 Champagne-au-Mont-d'Or

+33 478 350 221
 Fax : +33 478 356 954
 Email : info@arcel.fr