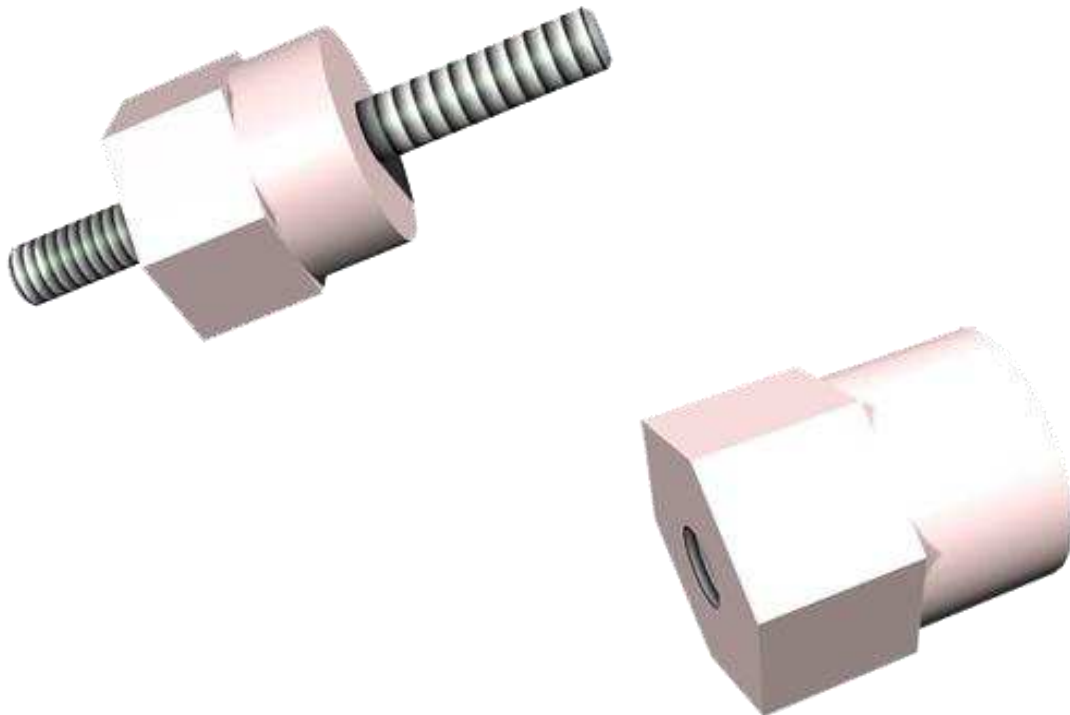

Hexa – Cylindrical Insulators



Our hexa-cylindrical insulators are electric insulators including a polyester and glass fibre body mounted with steel inserts which are used as attachment points.

They are intended for electrical and electronics industries.



All information included in this document is Arcel's or its respective authors' property. Therefore, any reproduction, use, adaptation, modification, integration, translation, commercial use, in whole or in part, by any means or any form (electronic, written or verbal) is forbidden, without prior written permission of Arcel or its respective authors.



Sommaire

1. DIMENSIONS of insulating body.....	3
2. COMBINATIONS of INSERTS	4
3. COMPOSITION	14
3.1. Insulating body :.....	14
3.2. Turned inserts :.....	14
4. FIRE RESISTANCE.....	14
5. ELECTRIC SPECIFICATIONS.....	14
6. MECANICAL SPECIFICATIONS	15

All information included in this document is Arcel's or its respective authors' property. Therefore, any reproduction, use, adaptation, modification, integration, translation, commercial use, in whole or in part, by any means or any form (electronic, written or verbal) is forbidden, without prior written permission of Arcel or its respective authors.

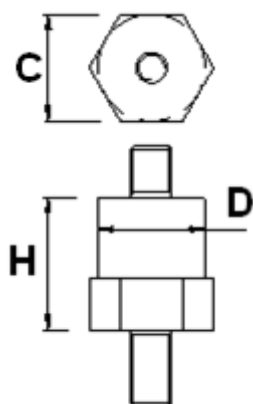


1. DIMENSIONS OF INSULATING BODY

The insulating body of our hexa-cylindrical insulators is defined according to different parameters :

- Height
- Diameter
- Dimensions accross flats

:



D Diameter in mm	C Dimension across flats in mm	H Height in mm
10	11	12.5
14	14	14
14	14	17
14	14	26
14	14	30
20	21	22
20	21	26
20	21	30
20	21	35
20	21	40

All information included in this document is Arcel's or its respective authors' property. Therefore, any reproduction, use, adaptation, modification, integration, translation, commercial use, in whole or in part, by any means or any form (electronic, written or verbal) is forbidden, without prior written permission of Arcel or its respective authors.



2. COMBINATIONS OF INSERTS

The attachment points of the insulators are made with inserts, either male or female. Here are the various possible combinations :

Item code	Body shape	Body Diameter	Body Height	Type of 1st insert	Tapping diameter / Threading X Length of insert (mm)	Type of 2 nd insert	Tapping diameter / Threading X Length of insert (mm)
002253	HEXA - CYL	10	12	MALE	3X05	MALE	3X05
002255	HEXA - CYL	14	14	MALE	4X07	MALE	4X07
002256	HEXA - CYL	14	14	MALE	4X07	MALE	4X10
002257	HEXA - CYL	14	14	MALE	4X07	MALE	4X15
002258	HEXA - CYL	14	14	MALE	4X10	MALE	3X10
002259	HEXA - CYL	14	14	MALE	4X10	MALE	4X10
002260	HEXA - CYL	14	14	MALE	4X10	MALE	4X15
002261	HEXA - CYL	14	14	MALE	4X10	MALE	5X10
002262	HEXA - CYL	14	14	MALE	4X10	MALE	5X15
002263	HEXA - CYL	14	14	MALE	4X10	MALE	6X07
002264	HEXA - CYL	14	14	MALE	4X10	MALE	6X10
002266	HEXA - CYL	14	14	MALE	4X15	MALE	4X15
002267	HEXA - CYL	14	14	MALE	5X08	MALE	5X15
002268	HEXA - CYL	14	14	MALE	5X10	MALE	4X15
002269	HEXA - CYL	14	14	MALE	5X10	MALE	5X10
002270	HEXA - CYL	14	14	MALE	5X10	MALE	5X15
002271	HEXA - CYL	14	14	MALE	5X10	MALE	6X10
002272	HEXA - CYL	14	14	MALE	5X15	MALE	5X15
002273	HEXA - CYL	14	14	MALE	6X07	MALE	6X07
002274	HEXA - CYL	14	14	MALE	6X07	MALE	6X15
025612	HEXA - CYL	14	14	MALE	6X10	MALE	4X10

All information included in this document is Arcel's or its respective authors' property. Therefore, any reproduction, use, adaptation, modification, integration, translation, commercial use, in whole or in part, by any means or any form (electronic, written or verbal) is forbidden, without prior written permission of Arcel or its respective authors.



Item code	Body shape	Body Diameter	Body Height	Type of 1st insert	Tapping diameter / Threading X Length of insert (mm)	Type of 2 nd insert	Tapping diameter / Threading X Length of insert (mm)
002275	HEXA - CYL	14	14	MALE	6X10	MALE	3X10
002277	HEXA - CYL	14	14	MALE	6X10	MALE	6X07
002278	HEXA - CYL	14	14	MALE	6X10	MALE	6X10
002279	HEXA - CYL	14	14	MALE	6X10	MALE	6X15
002280	HEXA - CYL	14	14	MALE	6X15	MALE	3X05
002281	HEXA - CYL	14	14	MALE	6X15	MALE	6X15
036867	HEXA - CYL	14	14	MALE	6X15	MALE	6X15
002286	HEXA - CYL	14	17	MALE	4X07	FEMALE	4X07
021134	HEXA - CYL	14	17	MALE	4X07	FEMALE	5X07
002287	HEXA - CYL	14	17	MALE	4X10	FEMALE	4X07
002288	HEXA - CYL	14	17	MALE	4X10	FEMALE	5X07
002290	HEXA - CYL	14	17	MALE	4X10	MALE	4X07
002291	HEXA - CYL	14	17	MALE	4X10	MALE	4X10
002292	HEXA - CYL	14	17	MALE	4X10	MALE	4X15
002293	HEXA - CYL	14	17	MALE	4X10	MALE	5X10
002294	HEXA - CYL	14	17	MALE	4X10	MALE	6X10
002295	HEXA - CYL	14	17	MALE	4X15	FEMALE	4X07
002296	HEXA - CYL	14	17	MALE	4X15	MALE	4X15
002297	HEXA - CYL	14	17	MALE	5X08	FEMALE	5X07
002298	HEXA - CYL	14	17	MALE	5X10	FEMALE	4X07
002299	HEXA - CYL	14	17	MALE	5X10	FEMALE	5X07
002300	HEXA - CYL	14	17	MALE	5X10	MALE	3X10
002301	HEXA - CYL	14	17	MALE	5X10	MALE	5X10

All information included in this document is Arcel's or its respective authors' property. Therefore, any reproduction, use, adaptation, modification, integration, translation, commercial use, in whole or in part, by any means or any form (electronic, written or verbal) is forbidden, without prior written permission of Arcel or its respective authors.



Item code	Body shape	Body Diameter	Body Height	Type of 1st insert	Tapping diameter / Threading X Length of insert (mm)	Type of 2 nd insert	Tapping diameter / Threading X Length of insert (mm)
002302	HEXA - CYL	14	17	MALE	5X10	MALE	5X15
002303	HEXA - CYL	14	17	MALE	5X10	MALE	6X10
002304	HEXA - CYL	14	17	MALE	5X15	FEMALE	4X07
002305	HEXA - CYL	14	17	MALE	5X15	FEMALE	5X07
002306	HEXA - CYL	14	17	MALE	5X15	MALE	4X15
002307	HEXA - CYL	14	17	MALE	6X07	FEMALE	5X07
002308	HEXA - CYL	14	17	MALE	6X07	FEMALE	6X07
002309	HEXA - CYL	14	17	MALE	6X07	MALE	6X07
002310	HEXA - CYL	14	17	MALE	6X07	MALE	6X10
002311	HEXA - CYL	14	17	MALE	6X07	MALE	6X15
002312	HEXA - CYL	14	17	MALE	6X10	FEMALE	4X07
002313	HEXA - CYL	14	17	MALE	6X10	FEMALE	5X07
002314	HEXA - CYL	14	17	MALE	6X10	FEMALE	6X07
002315	HEXA - CYL	14	17	MALE	6X10	MALE	3X10
002316	HEXA - CYL	14	17	MALE	6X10	MALE	6X10
002317	HEXA - CYL	14	17	MALE	6X10	MALE	6X15
002318	HEXA - CYL	14	17	MALE	6X15	FEMALE	6X07
002319	HEXA - CYL	14	17	MALE	6X15	MALE	6X15
026382	HEXA - CYL	14	17	MALE	6X15	FEMALE	5X07
002322	HEXA - CYL	14	26	MALE	4X07	FEMALE	4X07
002323	HEXA - CYL	14	26	MALE	4X07	MALE	4X07
002324	HEXA - CYL	14	26	MALE	4X07	MALE	4X10
002325	HEXA - CYL	14	26	MALE	4X07	MALE	4X15

All information included in this document is Arcel's or its respective authors' property. Therefore, any reproduction, use, adaptation, modification, integration, translation, commercial use, in whole or in part, by any means or any form (electronic, written or verbal) is forbidden, without prior written permission of Arcel or its respective authors.



Item code	Body shape	Body Diameter	Body Height	Type of 1st insert	Tapping diameter / Threading X Length of insert (mm)	Type of 2 nd insert	Tapping diameter / Threading X Length of insert (mm)
002326	HEXA - CYL	14	26	MALE	4X10	FEMALE	4X07
002327	HEXA - CYL	14	26	MALE	4X10	FEMALE	5X07
002328	HEXA - CYL	14	26	MALE	4X10	MALE	3X10
002329	HEXA - CYL	14	26	MALE	4X10	MALE	4X10
002330	HEXA - CYL	14	26	MALE	4X10	MALE	4X15
002331	HEXA - CYL	14	26	MALE	4X10	MALE	5X10
002332	HEXA - CYL	14	26	MALE	4X10	MALE	6X10
017971	HEXA - CYL	14	26	MALE	4X15	FEMALE	5X07
002333	HEXA - CYL	14	26	MALE	5X08	FEMALE	5X07
002334	HEXA - CYL	14	26	MALE	5X10	FEMALE	4X07
002335	HEXA - CYL	14	26	MALE	5X10	FEMALE	5X07
002336	HEXA - CYL	14	26	MALE	5X10	MALE	3X10
002337	HEXA - CYL	14	26	MALE	5X10	MALE	5X10
002338	HEXA - CYL	14	26	MALE	5X10	MALE	5X15
002339	HEXA - CYL	14	26	MALE	5X15	FEMALE	5X07
002340	HEXA - CYL	14	26	MALE	6X07	FEMALE	6X07
002341	HEXA - CYL	14	26	MALE	6X07	MALE	6X07
002342	HEXA - CYL	14	26	MALE	6X07	MALE	6X10
002343	HEXA - CYL	14	26	MALE	6X07	MALE	6X15
002344	HEXA - CYL	14	26	MALE	6X10	FEMALE	6X07
002345	HEXA - CYL	14	26	MALE	6X10	MALE	5X10
002346	HEXA - CYL	14	26	MALE	6X10	MALE	6X10
002347	HEXA - CYL	14	26	MALE	6X10	MALE	6X15
002353	HEXA - CYL	14	30	MALE	4X07	FEMALE	4X07

All information included in this document is Arcel's or its respective authors' property. Therefore, any reproduction, use, adaptation, modification, integration, translation, commercial use, in whole or in part, by any means or any form (electronic, written or verbal) is forbidden, without prior written permission of Arcel or its respective authors.



Item code	Body shape	Body Diameter	Body Height	Type of 1st insert	Tapping diameter / Threading X Length of insert (mm)	Type of 2 nd insert	Tapping diameter / Threading X Length of insert (mm)
002354	HEXA - CYL	14	30	MALE	4X07	MALE	4X07
002355	HEXA - CYL	14	30	MALE	4X07	MALE	4X10
002356	HEXA - CYL	14	30	MALE	4X07	MALE	4X15
002357	HEXA - CYL	14	30	MALE	4X07	MALE	5X10
002358	HEXA - CYL	14	30	MALE	4X07	MALE	6X10
002359	HEXA - CYL	14	30	MALE	4X10	FEMALE	4X07
002360	HEXA - CYL	14	30	MALE	4X10	MALE	3X10
002361	HEXA - CYL	14	30	MALE	4X10	MALE	4X10
002362	HEXA - CYL	14	30	MALE	4X10	MALE	4X15
002363	HEXA - CYL	14	30	MALE	4X10	MALE	5X10
002364	HEXA - CYL	14	30	MALE	4X10	MALE	6X10
002365	HEXA - CYL	14	30	MALE	4X15	MALE	4X15
002366	HEXA - CYL	14	30	MALE	5X08	FEMALE	5X07
002367	HEXA - CYL	14	30	MALE	5X08	MALE	4X10
002368	HEXA - CYL	14	30	MALE	5X08	MALE	5X08
002369	HEXA - CYL	14	30	MALE	5X08	MALE	5X10
002370	HEXA - CYL	14	30	MALE	5X10	FEMALE	4X07
002371	HEXA - CYL	14	30	MALE	5X10	FEMALE	5X07
002372	HEXA - CYL	14	30	MALE	5X10	MALE	5X10
002373	HEXA - CYL	14	30	MALE	5X10	MALE	5X15
002374	HEXA - CYL	14	30	MALE	5X10	MALE	6X10
002375	HEXA - CYL	14	30	MALE	5X10	MALE	6X15
023110	HEXA - CYL	14	30	MALE	5X10	FEMALE	6x07
002376	HEXA - CYL	14	30	MALE	5X15	FEMALE	5X07

All information included in this document is Arcel's or its respective authors' property. Therefore, any reproduction, use, adaptation, modification, integration, translation, commercial use, in whole or in part, by any means or any form (electronic, written or verbal) is forbidden, without prior written permission of Arcel or its respective authors.



Item code	Body shape	Body Diameter	Body Height	Type of 1st insert	Tapping diameter / Threading X Length of insert (mm)	Type of 2 nd insert	Tapping diameter / Threading X Length of insert (mm)
002378	HEXA - CYL	14	30	MALE	6X07	FEMALE	6X07
002379	HEXA - CYL	14	30	MALE	6X07	MALE	4X10
002380	HEXA - CYL	14	30	MALE	6X07	MALE	5X10
002381	HEXA - CYL	14	30	MALE	6X07	MALE	6X07
002382	HEXA - CYL	14	30	MALE	6X07	MALE	6X10
002383	HEXA - CYL	14	30	MALE	6X07	MALE	6X15
002384	HEXA - CYL	14	30	MALE	6X10	FEMALE	6X07
002385	HEXA - CYL	14	30	MALE	6X10	MALE	6X10
002386	HEXA - CYL	14	30	MALE	6X10	MALE	6X15
002387	HEXA - CYL	14	30	MALE	6X15	FEMALE	6X07
002388	HEXA - CYL	14	30	MALE	6X15	MALE	6X15
015125	HEXA - CYL	14	30	MALE	6X15	FEMALE	5X07
002389	HEXA - CYL	21	22	FEMALE	6X08	MALE	8X15
002390	HEXA - CYL	21	26	FEMALE	6X08	FEMALE	6X08
002391	HEXA - CYL	21	26	FEMALE	6X08	FEMALE	8X08
002392	HEXA - CYL	21	26	FEMALE	6X08	MALE	6X10
002393	HEXA - CYL	21	26	FEMALE	6X08	MALE	6X15
002394	HEXA - CYL	21	26	FEMALE	6X08	MALE	6X20
002395	HEXA - CYL	21	26	FEMALE	6X08	MALE	8X08
002396	HEXA - CYL	21	26	FEMALE	6X08	MALE	8X10
002397	HEXA - CYL	21	26	FEMALE	6X08	MALE	8X15
002398	HEXA - CYL	21	26	FEMALE	6X08	MALE	8X20
002399	HEXA - CYL	21	26	FEMALE	6X08	MALE	8X25
002400	HEXA - CYL	21	26	FEMALE	6X08	MALE	8X30

All information included in this document is Arcel's or its respective authors' property. Therefore, any reproduction, use, adaptation, modification, integration, translation, commercial use, in whole or in part, by any means or any form (electronic, written or verbal) is forbidden, without prior written permission of Arcel or its respective authors.



Item code	Body shape	Body Diameter	Body Height	Type of 1st insert	Tapping diameter / Threading X Length of insert (mm)	Type of 2 nd insert	Tapping diameter / Threading X Length of insert (mm)
002401	HEXA - CYL	21	26	FEMALE	8X08	FEMALE	8X08
002402	HEXA - CYL	21	26	FEMALE	8X08	MALE	6X07
002403	HEXA - CYL	21	26	FEMALE	8X08	MALE	6X10
002404	HEXA - CYL	21	26	FEMALE	8X08	MALE	6X15
002405	HEXA - CYL	21	26	FEMALE	8X08	MALE	8X08
002406	HEXA - CYL	21	26	FEMALE	8X08	MALE	8X10
002407	HEXA - CYL	21	26	FEMALE	8X08	MALE	8X15
002408	HEXA - CYL	21	26	FEMALE	8X08	MALE	8X20
002409	HEXA - CYL	21	26	FEMALE	8X08	MALE	8X25
002410	HEXA - CYL	21	26	FEMALE	8X08	MALE	8X30
019349	HEXA - CYL	21	26	FEMALE	8X08	FEMALE	6X08
029920	HEXA - CYL	21	26	FEMALE	8X08	MALE	6X20
002411	HEXA - CYL	21	26	MALE	6X15	MALE	6X10
002412	HEXA - CYL	21	26	MALE	6X15	MALE	6X15
002413	HEXA - CYL	21	26	MALE	6X15	MALE	6X20
002414	HEXA - CYL	21	26	MALE	6X15	MALE	8X15
002415	HEXA - CYL	21	26	MALE	6X20	MALE	6X07
002416	HEXA - CYL	21	26	MALE	6X20	MALE	6X10
002417	HEXA - CYL	21	26	MALE	6X20	MALE	6X20
002420	HEXA - CYL	21	26	MALE	8X15	MALE	8X08
002419	HEXA - CYL	21	26	MALE	8X15	MALE	6X20
002421	HEXA - CYL	21	26	MALE	8X15	MALE	8X10
002422	HEXA - CYL	21	26	MALE	8X15	MALE	8X15
002423	HEXA - CYL	21	26	MALE	8X15	MALE	8X20

All information included in this document is Arcel's or its respective authors' property. Therefore, any reproduction, use, adaptation, modification, integration, translation, commercial use, in whole or in part, by any means or any form (electronic, written or verbal) is forbidden, without prior written permission of Arcel or its respective authors.



Item code	Body shape	Body Diameter	Body Height	Type of 1st insert	Tapping diameter / Threading X Length of insert (mm)	Type of 2 nd insert	Tapping diameter / Threading X Length of insert (mm)
002424	HEXA - CYL	21	26	MALE	8X20	FEMALE	5X10
002425	HEXA - CYL	21	26	MALE	8X20	MALE	6X07
002426	HEXA - CYL	21	26	MALE	8X20	MALE	6X10
002427	HEXA - CYL	21	26	MALE	8X20	MALE	8X08
002428	HEXA - CYL	21	26	MALE	8X20	MALE	8X10
002429	HEXA - CYL	21	26	MALE	8X20	MALE	8X20
002430	HEXA - CYL	21	26	MALE	8X20	MALE	8X30
002431	HEXA - CYL	21	26	MALE	8X25	MALE	6X10
002432	HEXA - CYL	21	26	MALE	8X25	MALE	6X15
002433	HEXA - CYL	21	26	MALE	8X25	MALE	8X08
002434	HEXA - CYL	21	26	MALE	8X25	MALE	8X10
002435	HEXA - CYL	21	26	MALE	8X25	MALE	8X15
002436	HEXA - CYL	21	26	MALE	8X25	MALE	8X25
002437	HEXA - CYL	21	26	MALE	8X30	MALE	8X10
037855	HEXA - CYL	21	30	FEMALE	6X08	MALE	6X15
002438	HEXA - CYL	21	35	FEMALE	10X10	FEMALE	10X10
002439	HEXA - CYL	21	35	FEMALE	6X08	FEMALE	6X08
002440	HEXA - CYL	21	35	FEMALE	6X08	FEMALE	8X08
002441	HEXA - CYL	21	35	FEMALE	6X08	MALE	6X15
002442	HEXA - CYL	21	35	FEMALE	6X08	MALE	6X20
002443	HEXA - CYL	21	35	FEMALE	6X08	MALE	8X15
002444	HEXA - CYL	21	35	FEMALE	6X08	MALE	8X20
002445	HEXA - CYL	21	35	FEMALE	6X08	MALE	8X25

All information included in this document is Arcel's or its respective authors' property. Therefore, any reproduction, use, adaptation, modification, integration, translation, commercial use, in whole or in part, by any means or any form (electronic, written or verbal) is forbidden, without prior written permission of Arcel or its respective authors.



Item code	Body shape	Body Diameter	Body Height	Type of 1st insert	Tapping diameter / Threading X Length of insert (mm)	Type of 2 nd insert	Tapping diameter / Threading X Length of insert (mm)
002447	HEXA - CYL	21	35	FEMALE	8X08	FEMALE	8X08
002448	HEXA - CYL	21	35	FEMALE	8X08	MALE	6X20
002449	HEXA - CYL	21	35	FEMALE	8X08	MALE	8X08
002450	HEXA - CYL	21	35	FEMALE	8X08	MALE	8X10
002451	HEXA - CYL	21	35	FEMALE	8X08	MALE	8X15
002452	HEXA - CYL	21	35	FEMALE	8X08	MALE	8X20
002453	HEXA - CYL	21	35	FEMALE	8X08	MALE	8X25
002454	HEXA - CYL	21	35	FEMALE	8X08	MALE	8X30
019707	HEXA - CYL	21	35	FEMALE	8X08	FEMALE	5X10
022627	HEXA - CYL	21	35	FEMALE	8X08	MALE	8X17
002455	HEXA - CYL	21	35	MALE	6X15	MALE	6X10
002456	HEXA - CYL	21	35	MALE	6X15	MALE	6X15
002457	HEXA - CYL	21	35	MALE	6X15	MALE	6X20
002458	HEXA - CYL	21	35	MALE	6X20	MALE	6X07
002459	HEXA - CYL	21	35	MALE	6X20	MALE	6X15
002460	HEXA - CYL	21	35	MALE	6X20	MALE	6X20
031961	HEXA - CYL	21	35	MALE	8X13	MALE	8X10
002462	HEXA - CYL	21	35	MALE	8X15	MALE	6X20
002463	HEXA - CYL	21	35	MALE	8X15	MALE	8X08
002464	HEXA - CYL	21	35	MALE	8X15	MALE	8X10
002465	HEXA - CYL	21	35	MALE	8X15	MALE	8X15
002466	HEXA - CYL	21	35	MALE	8X15	MALE	8X20
002467	HEXA - CYL	21	35	MALE	8X20	MALE	8X08
002468	HEXA - CYL	21	35	MALE	8X20	MALE	8X10

All information included in this document is Arcel's or its respective authors' property. Therefore, any reproduction, use, adaptation, modification, integration, translation, commercial use, in whole or in part, by any means or any form (electronic, written or verbal) is forbidden, without prior written permission of Arcel or its respective authors.



Item code	Body shape	Body Diameter	Body Height	Type of 1st insert	Tapping diameter / Threading X Length of insert (mm)	Type of 2 nd insert	Tapping diameter / Threading X Length of insert (mm)
002470	HEXA - CYL	21	35	MALE	8X20	MALE	8X20
002471	HEXA - CYL	21	35	MALE	8X25	MALE	8X15
002472	HEXA - CYL	21	35	MALE	8X25	MALE	8X25
002473	HEXA - CYL	21	35	MALE	8X30	MALE	8X15
002474	HEXA - CYL	21	40	FEMALE	6X08	MALE	8X20

This list is not exhaustive. For any specific inquiry, please feel free to contact us.

All information included in this document is Arcel's or its respective authors' property. Therefore, any reproduction, use, adaptation, modification, integration, translation, commercial use, in whole or in part, by any means or any form (electronic, written or verbal) is forbidden, without prior written permission of Arcel or its respective authors.



6. MECHANICAL SPECIFICATIONS

Below is a table of the breaking stress when pulling the insulators' body, and depending on its diameter:

Diameter of insulator (in mm)	14	21
Breaking stress by pulling (in N)	800 N	1800 N

Below is a table of insulators' torque (maximum torque for mechanical fixing), depending on the insulators' body and diameter of inserts:

Diameter of insulator (in mm)	10	14				21	
Diameter of insert	M3	M3	M4	M5	M6	M6	M8
Torque (in Nm)	1 Nm	1 Nm	2 Nm	4 Nm	4 Nm	10 Nm	20 Nm

The above values are the results of laboratory tests and are given for information only. It is by no means a commitment of the company.

***CAUTION :** ARCEL reserves the right to make changes to its technical documentation without prior notice. This document is not contractual.*

All information included in this document is Arcel's or its respective authors' property. Therefore, any reproduction, use, adaptation, modification, integration, translation, commercial use, in whole or in part, by any means or any form (electronic, written or verbal) is forbidden, without prior written permission of Arcel or its respective authors.

