

PS Series

Miniature LED Lighting Power Supply
500mA or 1000mA Single Port Models



Product Features:

- Universal AC Input
- CEC Level IV Compliant
- Designed to Meet UL1310 Safety Standards
- Over Current Protection
- Short Circuit Protection
- Measures only 2.85 x 1.38 x 0.98"
- UL94V-0 Rated Enclosures for Indoor Applications
- Optional Encapsulated modules for Wet Environments



INPUT SPECIFICATIONS:

VOLTAGE	Universal AC Input (90~264 VAC)
FREQUENCY	47-63Hz
CURRENT	0.5A @ 230 VAC (Max Continuous)
PROTECTION	Single 1A Fuse / 250 VAC
HOLD-UP	20ms Minimum
EFFICIENCY	85% @ 120 VAC / Full Load

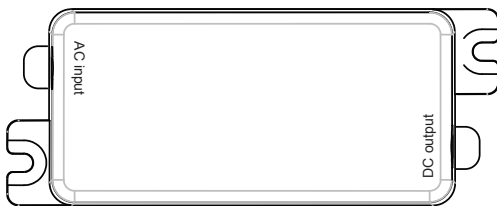
OUTPUT SPECIFICATIONS:

MINIMUM LOAD	none
REGULATION	±3% Max (line / Load / Temp)
RIPPLE	200mV pk-k max (20MHz)
OVER CURRENT	Output shall go into constant current regulation between 100% to 120% of rated output current
SHORT CIRCUIT PROTECTION	Hiccup Mode with Auto-Recovery

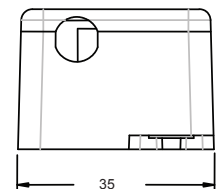
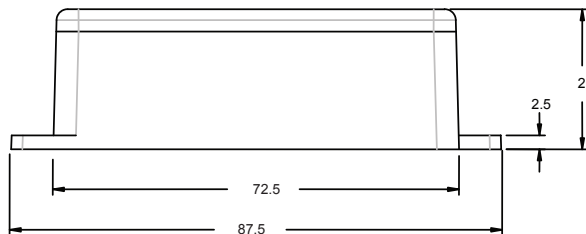
PART #	OUTPUT VDC	OUTPUT CURRENT
PS06FS12	12V	500mA
PS06FS15	15V	500mA
PS06FS24	24V	500mA
PS06FS30	30V	500mA
PS12FS12	12V	1000mA
PS12FS15	15V	1000mA
PS12FS24	24V	1000mA
PS12FS30	30V	1000mA

GENERAL SPECIFICATIONS:

OPERATING TEMPERATURE	-40 ~ +70°C (Derate 2.5% per °C above 50°C)
STORAGE TEMPERATURE	-40 ~ +85°C
COOLING	Convection Cooled
HUMIDITY	5-95% (non-condensing)
VIBRATION	Frequency 5 to 50 Hz, Acceleration ±7.35 M/(S²), 3 Axes
SHOCK	20G Peak Acceleration
RELIABILITY	>100,000 hours, MIL-HDBK217E at 25°C



Dimensions are in Millimeters



lhvpower.com