

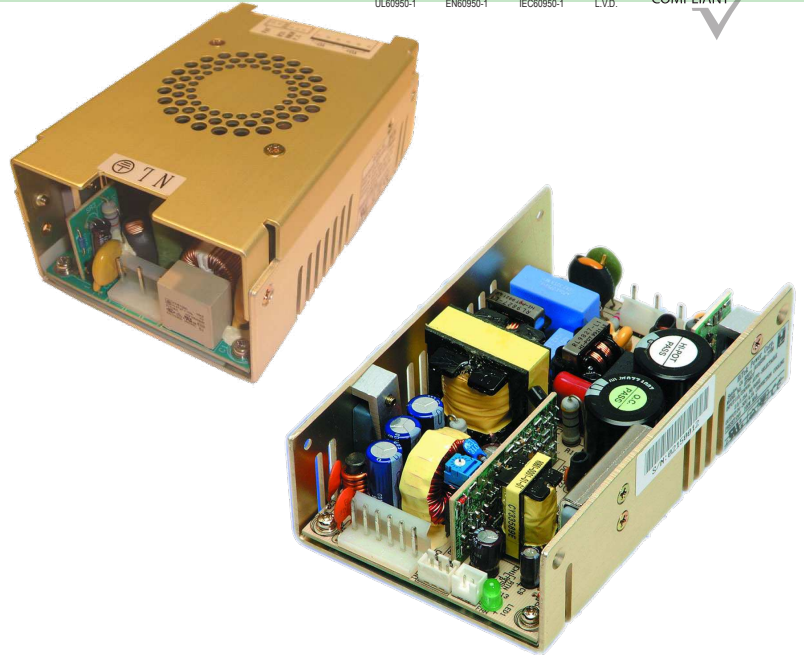
# LV250D Series

250 Watt U-Frame Switching Power Supply  
Dual Outputs ranging from 3.0 ~ 56 VDC



## Product Features:

- Auto-ranging AC input with Power Factor Correction
- Small Size - only 5 x 3.2 x 1"
- 200~ 250 Watt Operation with 23 cfm airflow
- 100% Burn-in, hi pot tested
- Price competitive design
- Signals including Enable & DC OK and
- Auxiliary Fan Output Function
- EN61000-3-2 / IEC100-3-2 Compliant
- Worldwide Safety Approvals
- EN55022 & FCC Class B Emissions
- CE Mark



## INPUT SPECIFICATIONS:

VOLTAGE	Autoranging AC Input ( 90-132 / 180-264 VAC)
FREQUENCY	47-63Hz
INRUSH	70A @230VAC Input Range (Max Cold Start)
CURRENT	6A @ 115 VAC / 3A @ 230 VAC (Max Continuous)
LEAKAGE	750uA Max @ 264 VAC
HOLD-UP	20ms Minimum
EFFICIENCY	>80%
HARMONICS	EN61000-3-2 Class A Compliant

## GENERAL SPECIFICATIONS:

OPERATING TEMPERATURE	0 ~ +70°C (Derate 2.5% per °C above 50°C)
STORAGE TEMPERATURE	-40 ~ +85°C
COOLING	16cfm for Full Load
HUMIDITY	5-95% (non-condensing)
VIBRATION	10-55Hz, 2G, 3Min Period, / 60 min each (3 axes)
SHOCK	20G Peak Acceleration
RELIABILITY	>100k Hours according to MIL-HBK-217F at 30°C

## OUTPUT SPECIFICATIONS:

ADJUSTMENT RANGE	±5 % (Minimum)
MINIMUM LOAD	10% of VI (Dual Output Models Only)
LINE REGULATION	±1% Max over entire input range
LOAD REGULATION	±1% maximum
RIPPLE	±1% or 50mV pk-k max, whichever is greater (20MHz)
SETPOINT ACCURACY	±1%
OVER CURRENT	110-135% (Auto-Recovery)
OVER VOLTAGE PROTECTION	Latches off at >130% of Vnom

## EMISSIONS:

EMISSIONS	EN55022 Level B (Conducted)
ELECTROSTATIC DISCHARGE	EN61000-4-2, 4kV Contact / 8kV Air
RADIED SUSCEPTIBILITY	EN61000-4-3, 26-1000MHz, 10V/M, 80%AM
EFT / BURSTS	EN61000-4-4, 2kV
SURGES	EN61000-4-5, 2kV Earth, 1kV Line-Line
CONDUCTED IMMUNITY	EN61000-4-6, 0.15-800MHz, 10V 80%
VOLTAGE DIPS	EN61000-4-10, 95% Dip & 10ms, 30% Dip & 500ms
VOLTAGE INTERRUPTIONS	EN61000-4-11, 95% reduction, 5ms
FLUCTUATIONS & FLICKER	EN61000-3-3

## STATUS & CONTROL SPECIFICATIONS:

REMOTE ON/OFF	High signal enables output VDC
DC OK	High Signal indicates DC Output is on and within regulation
AUXILIARY FAN	12V @ 150mA

## SAFETY STANDARDS:

UL /CUL	60950-1
CSA	22.2 # 60950-1
TUV	EN60950-1
CB REPORT	IEC60950-1
CE MARK	LVD



lhvpower.com

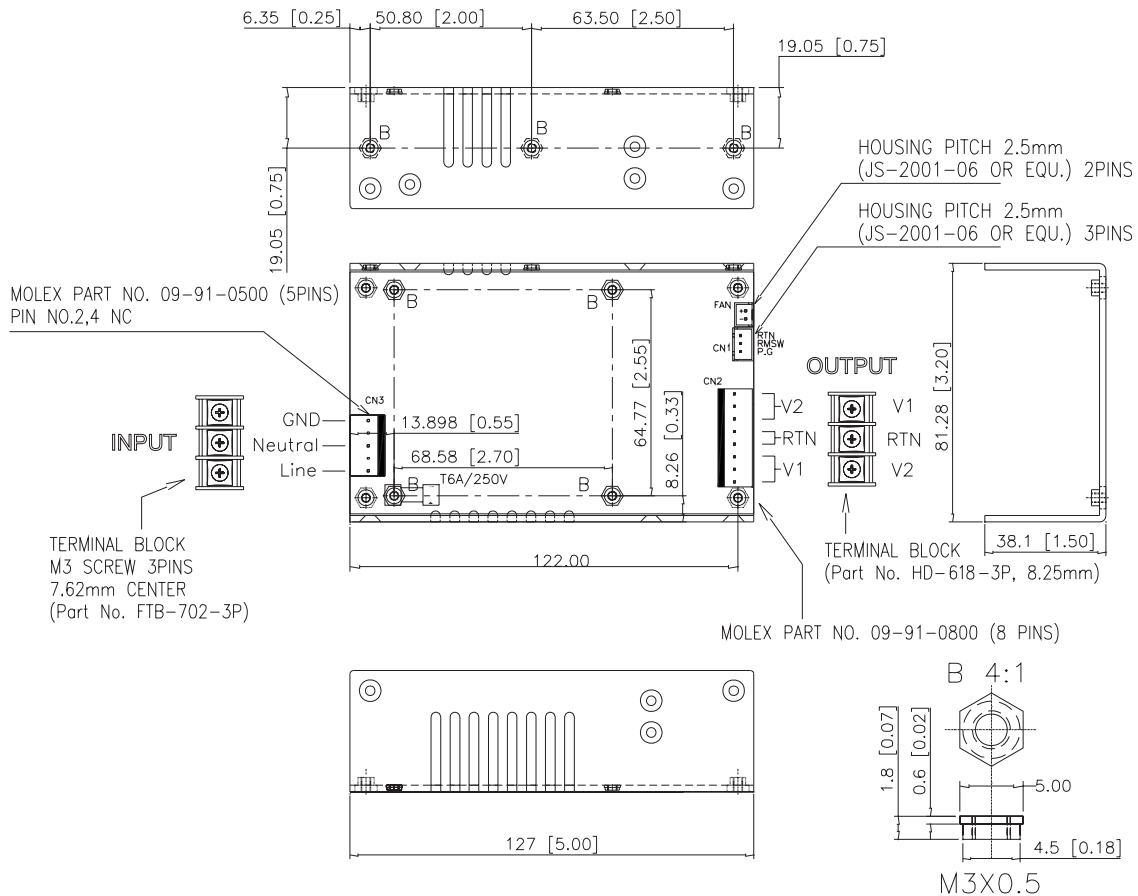
# LV250D Series

## 250 Watt U-Frame Switching Power Supply Dual Outputs ranging from 3.0 ~ 56 VDC

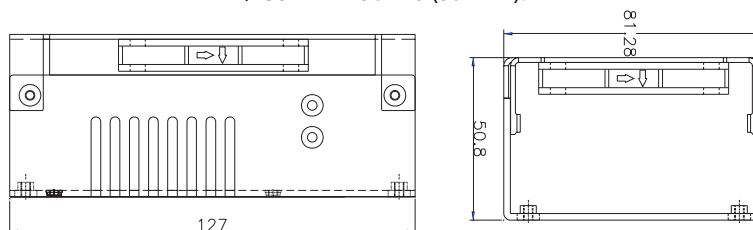
PART #	INPUT	OUTPUTS				NOTE
		V1 / A1	V2 / A2	V3 / A3	V4 / A4	
LV250Dx-0312		+3.3V 24.00A	+12V 12.00A			Total Power not to exceed 200 Watts Continuous
LV250Dx-0324		+3.3V 24.00A	+24V 6.00A			Total Power not to exceed 200 Watts Continuous
LV250Dx-0512		+5V 24.00A	+12V 12.00A			Total Power not to exceed 200 Watts Continuous
LV250Dx-0524		+5V 24.00A	+24V 6.00A			Total Power not to exceed 200 Watts Continuous
LV250Dx-0548		+5V 24.00A	+48V 3.00A			Total Power not to exceed 200 Watts Continuous
LV250Dx-1224		+12V 12.00A	+24V 6.00A			Total Power not to exceed 250 Watts Continuous

- Replace "x" with U to designate U-Frame Package or "F" for Top-Mount Fan Cover
- Standard Connections are Molex. Add the Suffix "T" to designate Terminal Block connectors.
- Input Connector (CN3): Mating Molex Part No. 09-91-0500 or equivalent (5 pin, 3 used) PCB is Labeled: L = Line; N = Neutral; G = Chassis Ground Mating Pins; Molex Series 2478, 2578, 8818 or Howder M3. 3 pin Terminal block 6.35MM Center (HD-601-3P).
- Output Connector (CN2): Mating Molex Part No. 09-91-0800. Pins: Molex Series 2478, 2578, 8818. or Howder M3. 3 pin Terminal block 8.25MM Center (HD-816-3P).
- Power Good, Remote On/Off mating connectors (CN1): Mating JST Part No. XHP-3 or equivalent (CHYAO SHIUNN JS-2001-03). Mating Pins: JST SXH-002T-PO.6 FOR AWG 30 to 26.
- Fan Drive: Mating JST Part No. XHP-2 or equivalent (CHYAO SHIUNN JS-2001-02).
- Mounting Inserts: 7 Places M3. Maximum Penetration 3.8mm sees outline drawing for location.

### U-FRAME MODELS (Suffix U):



### FAN / COVER MODELS (Suffix F):



lhvpower.com