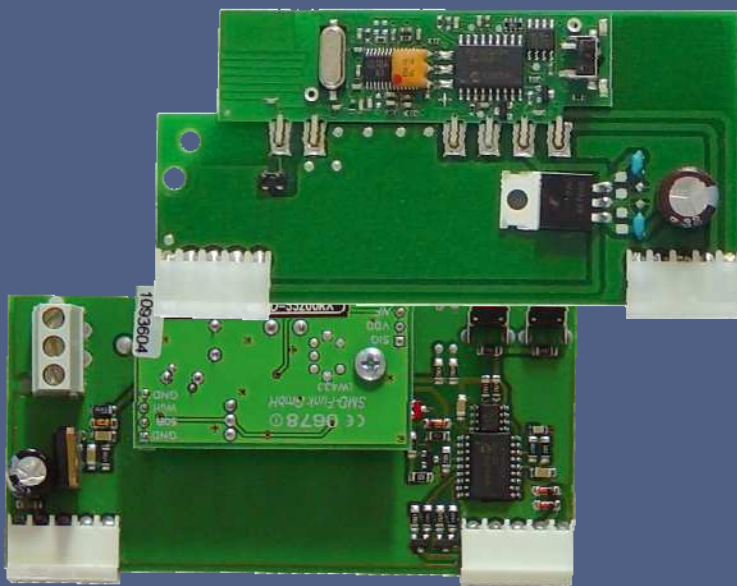


TST SFPE2-A/-D 2-channel radio receiver modules (433 MHz/868 MHz)



FEATURES

- Plug-in modules for several TRICON- / RELCON control units
- Frequency ranges 433 MHz and 868 MHz
- Teach in of max. 32 transmitters
- Operation with cable antenna or conductor track antenna (868 MHz)
- Receiving display via LED





ORDER DESCRIPTIONS

TST SFFE2-A
Radio receiver plug-in module

TST SFFE2-D
Radio receiver plug-in module

TECHNICAL DATA

TST SFFE2-A

Dimensions (W x H)	101 x 49 mm
Main voltage	12-24V _{DC}
Current consumption	approx. 8 mA without HF module
Settings	3200 Mode 35-110 ms
Connections	2x 5-pin MOLEX type for supply and commands 1x 3-pin screw terminal for antenna
Displays	1x LED red for function check
Control elements	1x learning press button 1x DIP-switch for latch function (optional)

TST SFFE2-D

Dimensions (W x H)	101 x 53 mm
Main voltage	12-24V _{DC}
Current consumption	approx. 8 mA
Settings	112 codes
Connections	2x 5-pin MOLEX type for supply and commands 2x 2-pin jumper pins for antenna
Displays	2x LED red for function check
Control elements	1x learning press button