

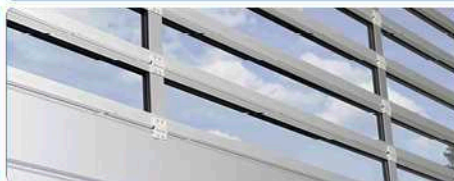
TRICON

TST FU3E-A/-C/-F Door control unit with integrated frequency converter



FEATURES

- Smooth starting and braking offers maximum material protection and a long product life cycle
- Fast startup speeds processes and reduces waiting times
- Easy installation due to extensive pre-settings for standard door systems and self-learning automatic configuration
- Slots for additional modules
- Clear text display
- Operation of three phase AC motors up to 5 kW
- Optional with UL approval





ADDITIONAL FUNCTIONALITY

- Voltage range 3~ 200 V_{AC}...480 V_{AC} +/-10%
- Conformity to latest standards (TÜV, CE)
- 24 V safety low voltage according to EN 60335-1
- ESD resistance up to 25 kV
- Integrated control electronic for several safety edges (Resistance / optical systems)
- LCD clear text display
- Plug in sockets for additional modules
 - In-/Output extension
 - 1-/2-channel induction loop detector
 - 1-/2-channel radio (FM 433 MHz / 868 MHz)
 - additional safety edge evaluation
- Mechanical or electrical limit switch operation
- Plug in terminals for control voltage and sensory analysis
- Up to 20 (28) digital inputs and 2(6) relay outputs are factory adjusted for standard applications – various special functions can be adjusted by parameter:
Functionality, operation mode, contact, warning- and hold open time, direction, diagnostic texts for plaintext display,...

TECHNICAL DATA

Order descriptions

TST FU3E-A (2.2 kW)
TST FU3E-AP (2.2 kW, circuit board)

TST FU3E-C (4.0 kW)
TST FU3E-CP (4.0 kW, circuit board)

TST FU3E-F (5.0 kW)
TST FU3E-FP (5.0 kW, circuit board)

TST FU3E-AUG (2.2 kW, UL approval)
TST FU3E-AUP (2.2 kW, UL approval, circuit board)
TST FU3E-CUG (4.0 kW, UL approval)
TST FU3E-CUP (4.0 kW, UL approval, circuit board)

Dimensions (W x H x D)	300 x 400 x 120 mm
Housing	Steel metal
Power supply	3~200-480 V _{AC} +/-10% / 50-60 Hz
Motor	3~ asynchronous motors up to 2.2 kW / 5 A resp. 4.0 kW / 10 A resp. 5.0 kW / 12 A, - high overload resistance for doors - incl. 3~safety isolation relays
Operating frequencies	6-200 Hz (separate adjustable frequency ramps for all door operating modes)
Control voltage / Low voltage supply	24 V _{DC} , safe 24 V _{DC} +/-5% / 500 mA short-circuit-proof
Temperature range	-10°C up to 50°C

STANDARD CONFORMITY

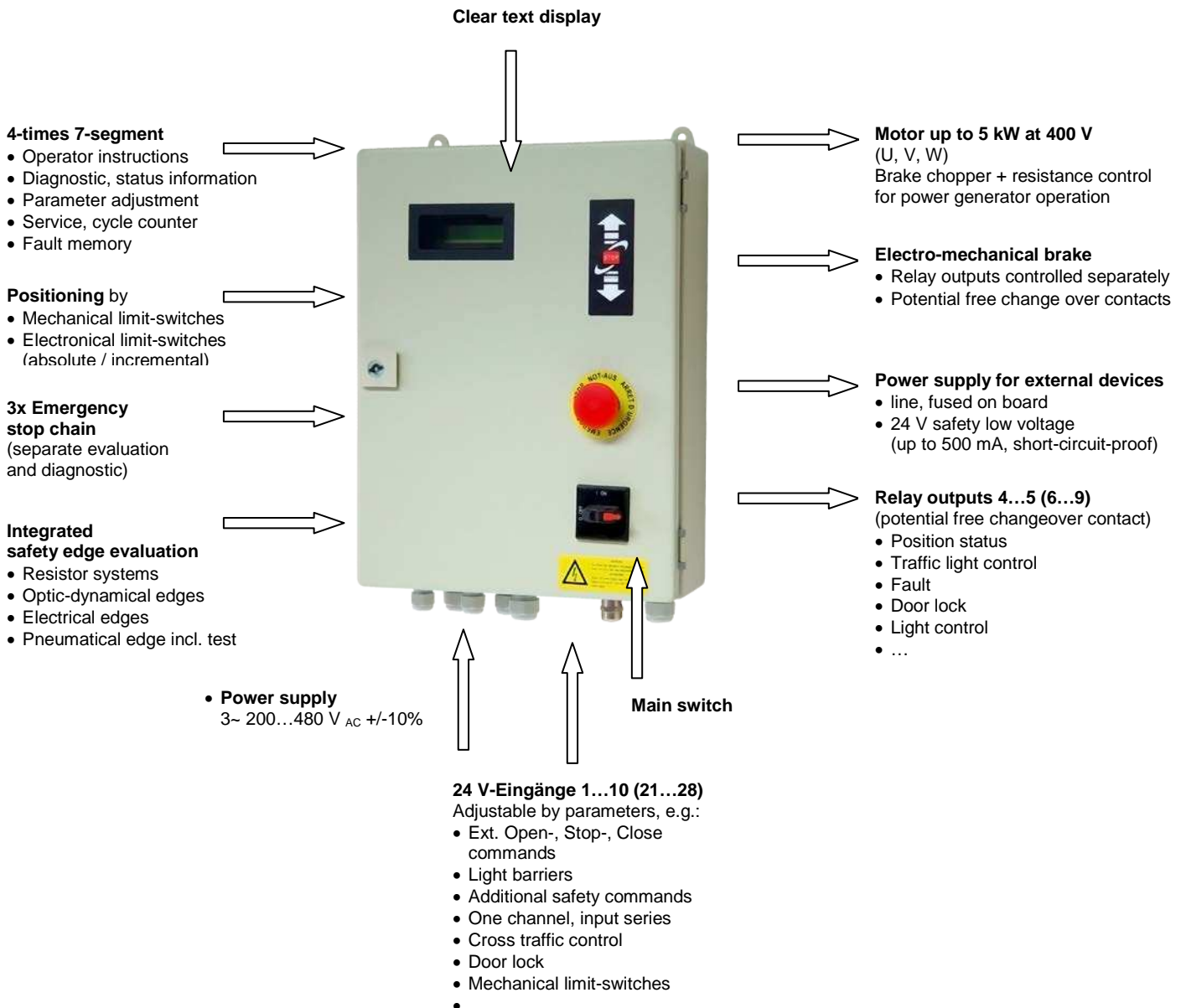
Doors	EN 12453 / EN 12978
Voltage	EN 60335 / EN 60335-1
EMC	EN 50081 / EN 50082

APPROVAL

TÜV Baumusterprüfung
UL (Underwriters Laboratories Inc.)

FEIG ELECTRONIC reserves the right to change specification without notice at any time.
Stand of information: January 2012.

Assembly TST FU3E-x:



FEIG ELECTRONIC reserves the right to change specification without notice at any time.
Stand of information: January 2012.