

TRICON

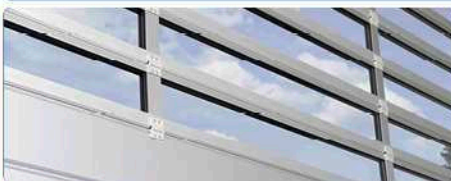
## TST FUZ-B

Door control unit with integrated frequency converter for barrier systems, sliding gates, speed gates, bollards



### FEATURES

- Smooth starting and braking offers maximum material protection and a long product life cycle
- Fast startup speeds processes and reduces waiting times
- Easy installation due to extensive pre-settings for standard door systems and self-learning automatic configuration
- Allows parallel operation of 2 barriers or doors (e.g. double-leaf folding doors)
- Slots for radio, induction loop detector or safety edge evaluation
- Operation of three phase AC motors up to 0.75 kW



Intelligent Door Management

**FEIG**  
ELECTRONIC



## TECHNICAL DATA

Order description	TST FUZ-B
Dimensions (W x H x D)	180 x 320 x 110 mm
Housing	Plastic
Power supply	1~110-240 V <sub>AC</sub> +/-10% / 50-60 Hz
Motor	3~ asynchronous motors up to 0.75 kW @ 230 V / 5 A; with high overload resistance for doors
Operating frequencies	6-200 Hz (separate adjustable frequency ramps for all door operating modes)
Control voltage / Low voltage supply	24 V <sub>DC</sub> , safe 24 V <sub>DC</sub> +/-5% / 250 mA short-circuit-proof
Temperature range	-20°C up to 50°C

## ADDITIONAL FUNCTIONALITY

- Voltage range 1~ 110 V<sub>AC</sub>...240 V<sub>AC</sub> +/-10%
- Conformity to latest standards (TÜV, CE)
- 24 V safety low voltage according to EN 60335-1
- ESD resistance up to 25 kV
- Integrated control electronic for several safety edges (1k2 / 8k2 and optical systems)
- Slots for 2 channel radio, 2 channel induction loop detector or 6 channel safety edge evaluator
- Connection for I/O extension card (for 6 inputs, 7 outputs, clock, 2 channel detector, external display, RS485- and CAN interface)
- Connection for interface module TST RFUZ-COM for parallel operation of two doors
- Mechanical limit switch operation
- Incl. CEE plug as main switch
- Plug in terminals for main control functions
- Up to 16 digital inputs and 2 relay outputs are factory adjusted for standard applications – various special functions can be adjusted by parameter:  
Funktionalität, operation mode, contact, warning- and hold open time, direction, diagnostic texts for plaintext display,...

## STANDARD CONFORMITY

Doors	EN 12453 / EN 12978
Voltage	EN 60335 / EN 60335-1
EMC	EN 50081 / EN 50082

## APPROVAL

TÜV Baumusterprüfung

FEIG ELECTRONIC reserves the right to change specification without notice at any time.  
Stand of information: January 2012.

## Assembly TST FUZ-B:

### 4-times 7-segment

- User interface
- Diagnostic, status information
- Parameter adjustment
- Service, cycle counter
- Fault memory

### Positioning by

- Mechanical limit-switches
- Absolute encoder

### Integrated safety edge evaluation

- Resistor systems
- Optic-dynamical edges
- Electrical edges
- Pneumatical edge incl. test



Motor up to 0.75 kW at 230 V  
(U, V, W)

### Power supply for external devices

- line, fused on board
- 24 V safety low voltage  
(up to 250 mA, short-circuit-proof)

### 2x Relay

- (potential free changeover contact)
- Position status
  - Warning light / traffic lights
  - Fault
  - Door lock
  - Light control
  - Brake
  - ...

Power supply  
110...240 V AC  
(L, N, PE)

### 24 V-Eingänge 1...9

- Adjustable by parameters, e.g.:
- Ext. Open-, Stop-, Close commands
  - Light barriers
  - Additional safety commands
  - One channel, input series
  - Cross traffic control
  - Door lock
  - Dead man / automatic operation
  - Mechanical limit-switches
  - ...

FEIG ELECTRONIC reserves the right to change specification without notice at any time.  
Stand of information: January 2012.