

PCI Express to FeaturePak Adapter

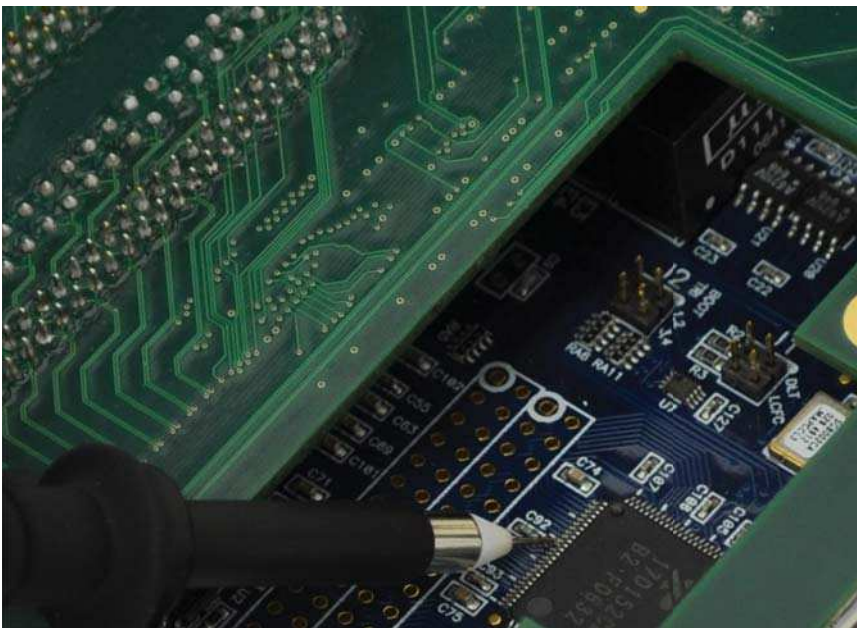
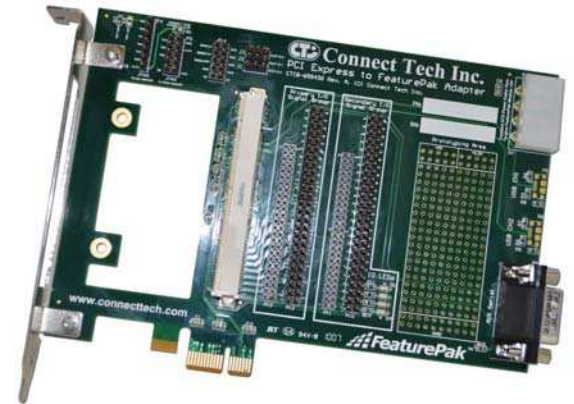
Connect Tech's PCI Express to FeaturePak Adapter board allows users to install a FeaturePak module into any PCI Express system slot.

This adapter allows for easy development, debugging, and prototyping directly on the adapter and it brings out all of the FeaturePak IO signals to separate headers and connectors, as well as giving the user access to all of the critical additional FeaturePak signals.

This adapter supports any x1, x4, x8 or x16 lane PCI Express slot.

Simply mount the FeaturePak module to the adapter and install the adapter into any PCI Express slot.

Product Name: PCI Express to FeaturePak Adapter
Part Number: ADG022



The FeaturePak adapter features an open access area for instrumentation and measurement on the top or bottom side of the adapter

FEATURES

- ✓ *Converts FeaturePak modules to PCI Express*
- ✓ *x1 lane PCI Express card edge allows installation in any slot width (x1, x4, x8, x16)*
- ✓ *All 100 FeaturePak IO signals are brought out to .1" and 2mm vertical headers*
- ✓ *All other FeaturePak system interface signals are terminated and accessible on adapter*
- ✓ *Custom prototyping area*

Specifications

Connectors	2mm + .1" FeaturePak IO headers, 2x Micro B USB, JTAG, ATX Power, DB-9
Dimensions	4.350" x 6.000"
Bus	PCI Express 1.1 Elec Mech
Additional FeaturePak Signals Available	1x DB-9 for FeaturePak auxiliary serial signals USB, SMBus, Slot ID, User LEDs
Compliance	Complies with PCI Express 1.1 electromechanical requirements
Warranty and Support	Lifetime warranty and free technical support

RoHS

Specifications subject to change without notice.
©2010, Connect Tech Inc. All trademarks are property of their respective holder.

Connect Tech Inc.
42 Arrow Road, Guelph ON Canada
Tel: 519.836.1291 **Fax:** 519.836.4878
Toll: 800.426.8979 (North America)
Email: sales@connecttech.com
www.connecttech.com

CTIX-00142.0.01 - 04.21.10