

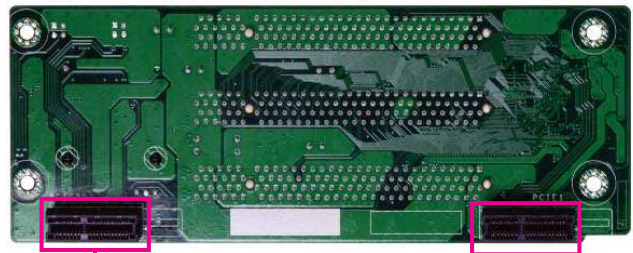
# T300-3P1M

## Mini PCIe/PCI Riser Card



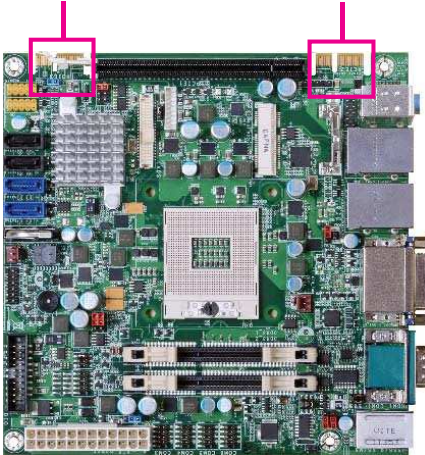
PCI  
PCI  
PCI

Mini PCIe



DFI Proprietary Extension Bus

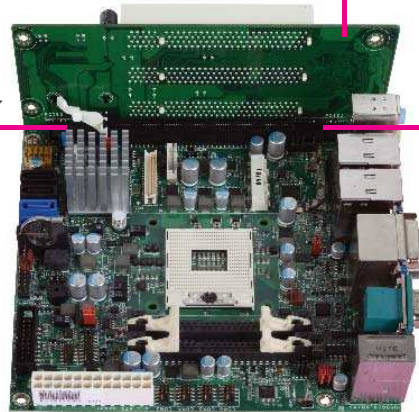
DFI Proprietary Extension Bus



Motherboard

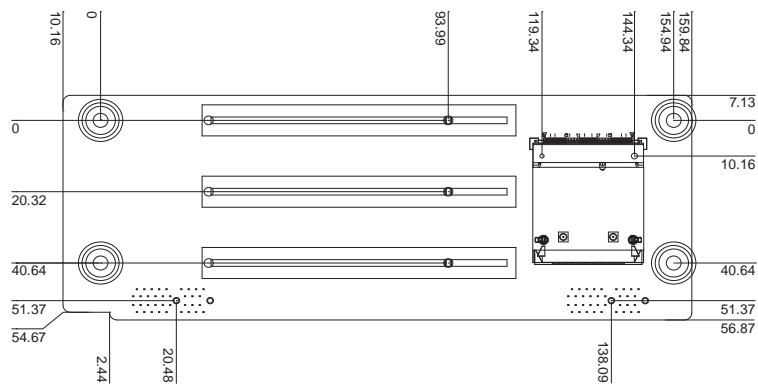
DFI Proprietary Extension Bus

T300-3P1M



DFI Proprietary Extension Bus

T300-3P1M Connected to the Motherboard



Mechanical Diagram

## Specifications

### Expansion Slots

- 1 Mini PCIe slot
- 3 PCI slots
  - PCI 2.3, 32-bit, 33MHz

### Interface

- 2 DFI Proprietary Extension Bus
  - Connects to the 2 DFI Proprietary Extension Bus of the Motherboard

### Dimensions

- 170 mm (6.7") x 64 mm (2.52")

### Applicable Motherboards

- HR100-CRM, CR100-CRM, CM100-C