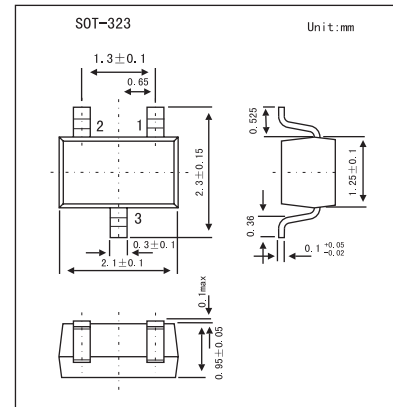
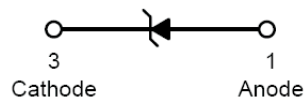


## 200mW Surface Mount Zener Diode MMBZ5239BW

### Features

- Planar Die Construction
- General Purpose, Medium Current
- Ideally Suited for Automated Assembly Processes



### Absolute Maximum Ratings $T_a = 25^\circ\text{C}$

Parameter	Symbol	Rating	Unit
Forward Voltage @ $I_F = 10\text{mA}$	$V_F$	0.9	V
Power Dissipation *1	$P_d$	200	mW
Thermal Resistance, Junction to Ambient Air *1	$R_{\theta JA}$	625	$^\circ\text{C}/\text{W}$
Operating and Storage Temperature Range	$T_j, T_{STG}$	-65 to +150	$^\circ\text{C}$

\*1. Part mounted on FR-4 PC board with recommended pad layout

### Electrical Characteristics @ $T_A=25^\circ\text{C}$ unless otherwise specified

Type Number	Zener Voltage Range *1				Maximum Zener Impedance *2		Maximum Reverse Leakage Current *1	
	$V_Z @ I_{ZT}$			$I_{ZT}$	$Z_{ZT} @ I_{ZT}$	$Z_{ZK} @ I_{ZK} = 0.25\text{mA}$	$I_R$	@ $V_R$
	Nom (V)	Min (V)	Max (V)	mA	$\Omega$		$\mu\text{A}$	V
MMBZ5239BW	9.1	8.65	9.56	20	10	600	3	7

\*1. Short duration test pulse used to minimize self-heating effect.

\*2.  $f = 1\text{KHz}$ .

### Marking

Marking	KF4
---------	-----

### MMBZ5239BW

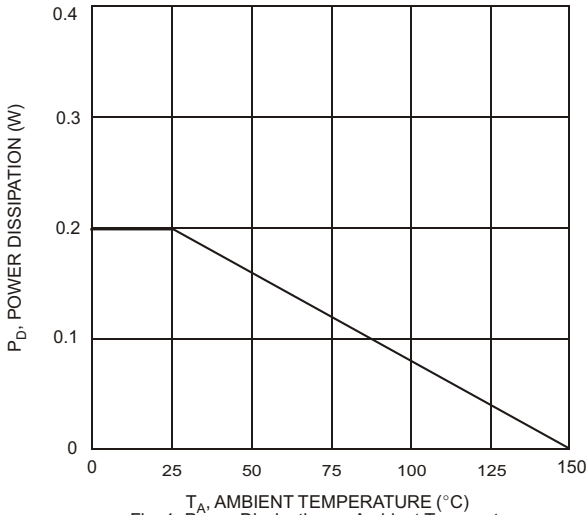


Fig. 1 Power Dissipation vs Ambient Temperature

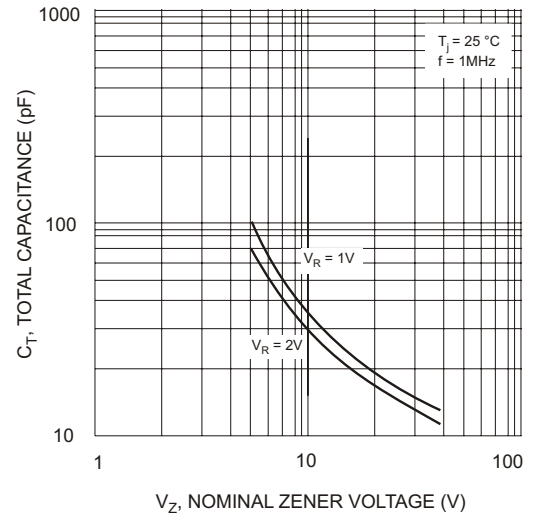


Fig. 2 Total Capacitance vs Nominal Zener Voltage

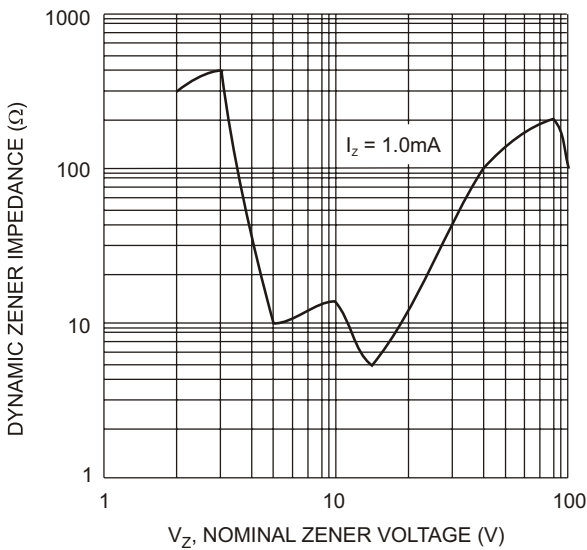


Fig. 3 Zener Voltage vs. Zener Impedance

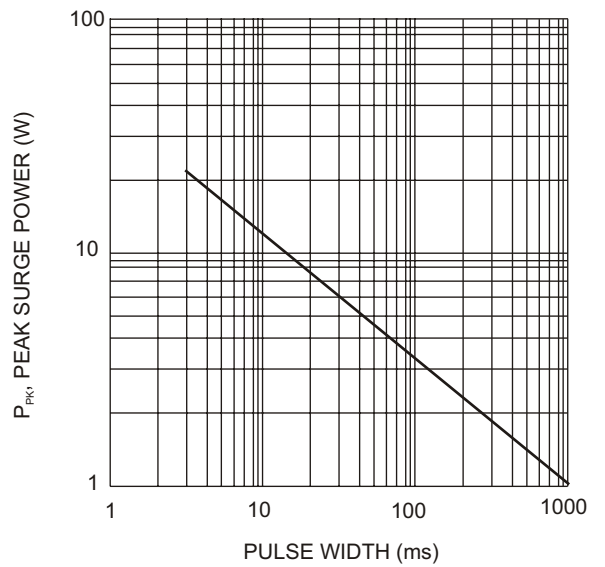


Fig. 4 Maximum Non-repetitive Surge Power

### MMBZ5239BW

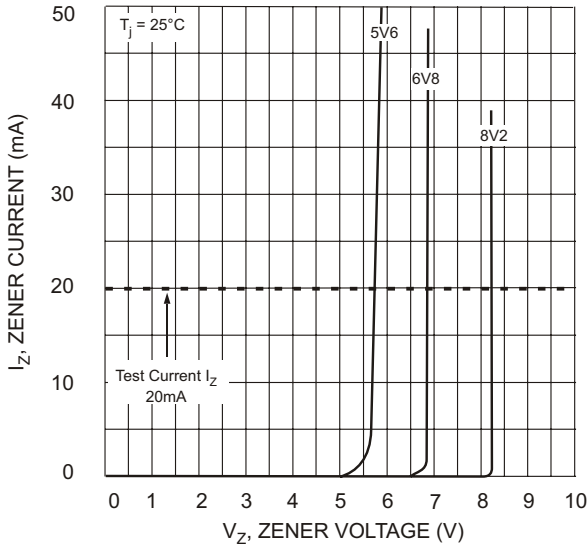


Fig. 5 Zener Breakdown Characteristics

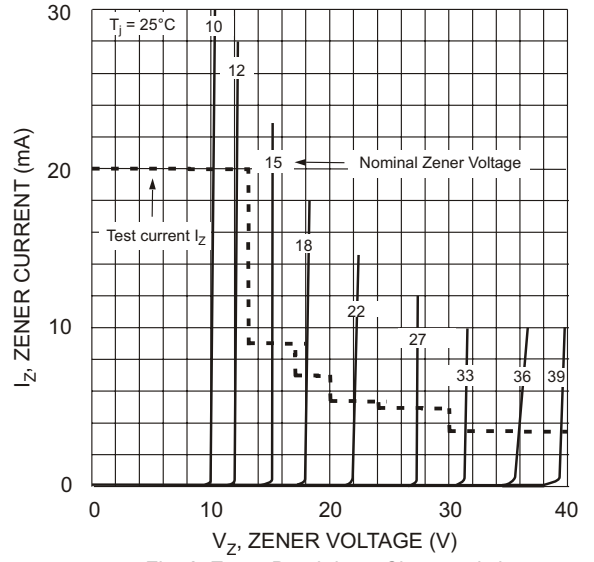


Fig. 6 Zener Breakdown Characteristics