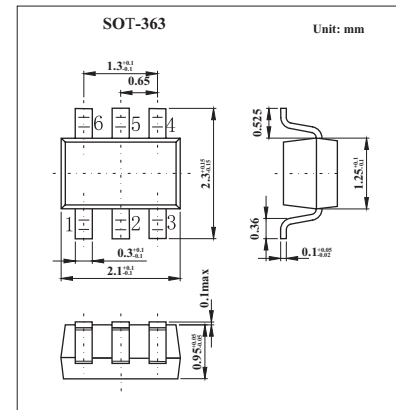
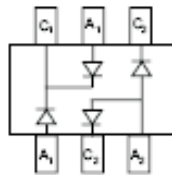


Quad Surface Mount Switching Diode Array KAV756DW(BAV756DW)

■ Features

- Fast Switching Speed
- Ultra-Small Surface Mount Package
- For General Purpose Switching Applications
- High Conductance



■ Absolute Maximum Ratings Ta = 25°C

Parameter	Symbol	Rating	Unit
Non-Repetitive Peak Reverse Voltage	V _{RM}	100	V
Peak Repetitive Reverse Voltage	V _{R(RM)}	75	V
Working Peak Reverse Voltage	V _{R(WM)}		
DC Blocking Voltage	V _R		
RMS Reverse Voltage	V _{R(RMS)}	53	V
Average Rectified Output Current	I _O	150	mA
Forward Continuous Current	I _{FM}	300	mA
Non-Repetitive Peak Forward Surge Current @ t = 1.0 μs	I _{FSM}	2.0	A
@ t = 1.0s		1.0	
Power Dissipation	P _d	200	mW
Thermal Resistance Junction to Ambient Air	R _{θJA}	625	K/W
Operating and Storage Temperature Range	T, T _{STG}	-65 to +150	°C

■ Electrical Characteristics Ta = 25°C

Parameter	Symbol	Testconditions	Min	Typ	Max	Unit
Maximum Forward Voltage	V _{FM}	I _F = 1.0mA			0.715	V
		I _F = 10mA			0.855	
		I _F = 50mA			1.0	
		I _F = 150mA			1.25	
Maximum Peak Reverse Current	I _{RM}	V _R = 75V			2.5	μA
		V _R = 75V, T _j = 150°C			50	μA
		V _R = 25V, T _j = 150°C			30	μA
		V _R = 20V			25	nA
Junction Capacitance	C _j	V _R = 0, f = 1.0MHz			2	pF
Reverse Recovery Time	t _{tr}	I _F = I _R = 10mA, I _{tr} = 0.1 X I _R , R _L = 100 Ω			4	ns

■ Marking

Marking	KCA
---------	-----