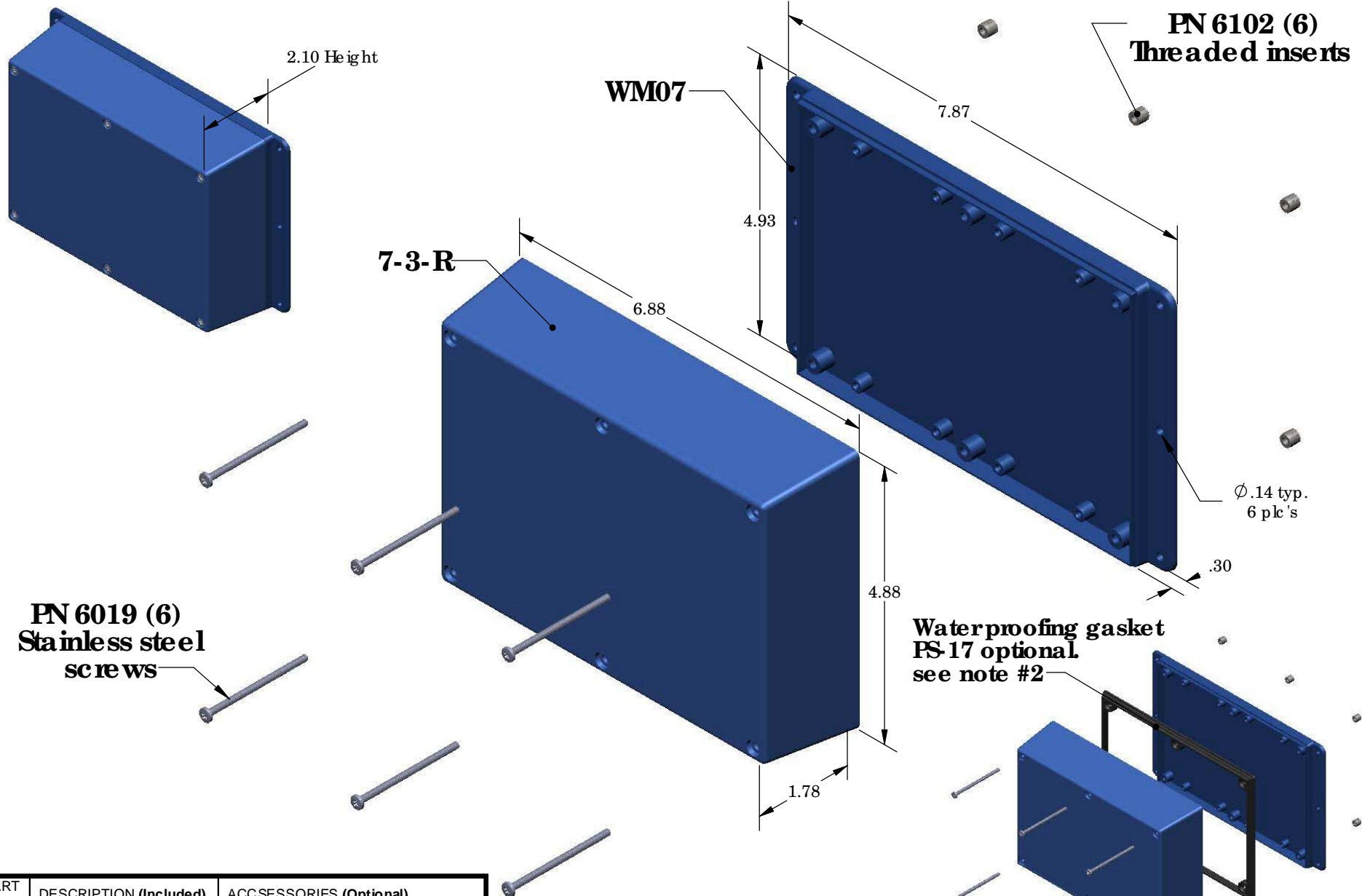


WM073-R (exploded isometric)

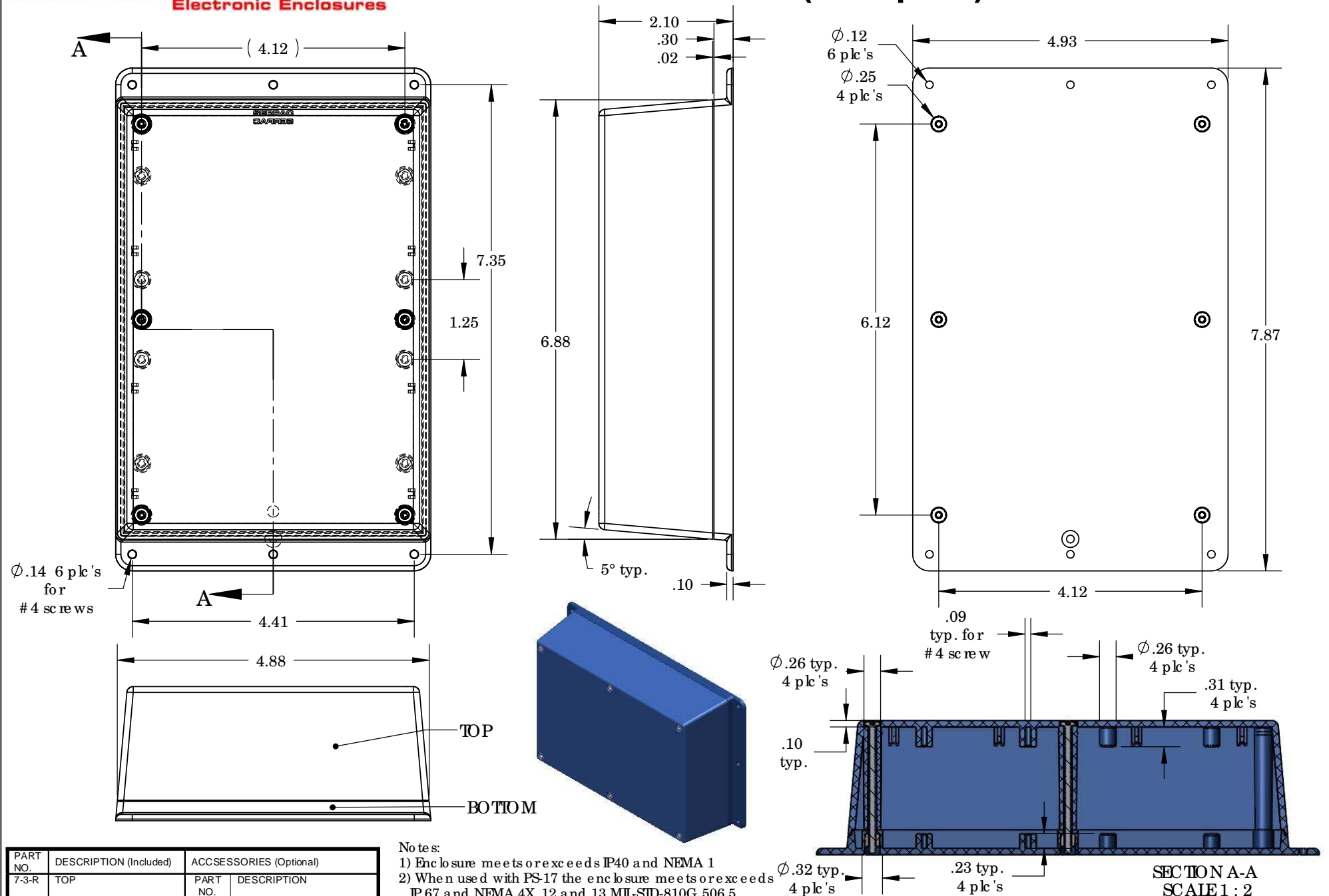


| PART NO. | DESCRIPTION (Included) | ACCESSORIES (Optional) | |
|----------|------------------------|------------------------|----------------|
| 7-3-R | TOP | PART NO. | DESCRIPTION |
| WM07 | BOTTOM | 50 | Non-skid Feet |
| 6019 | 4-40 SCREW (6) | PS-17 | Perimeter Seal |
| 6102 | THREADED INSERTS (6) | | |

- Notes:
- 1) Enclosure meets or exceeds IP40 and NEMA 1
 - 2) When used with PS-17 the enclosure meets or exceeds IP 67 and NEMA 4X, 12 and 13 MIL-STD-810G 506.5
 - 3) Circuit Board drawings can be downloaded at:
http://www.serpac.com/Products/Series/x7x/drawings/X73_to-p-CB.pdf
 - 4) All components are RoHS Compliant.

SERPAC WM073-R (user print)

Electronic Enclosures



| PART NO. | DESCRIPTION (Included) | ACCESSORIES (Optional) | |
|----------|------------------------|------------------------|----------------|
| 7-3-R | TOP | PART NO. | DESCRIPTION |
| WM07 | BOTTOM | 50 | Non-skid Feet |
| 6019 | 4-40 SCREW (6) | PS-17 | Perimeter Seal |
| 6102 | THREADED INSERTS (6) | | |

- Notes:
- 1) Enclosure meets or exceeds IP40 and NEMA 1
 - 2) When used with PS-17 the enclosure meets or exceeds IP 67 and NEMA 4X, 12 and 13 MIL-SID-810G 506.5
 - 3) Circuit Board drawings can be downloaded at: http://www.serpac.com/Products/Series/x7x/drawings/X73_top-CB.pdf
 - 4) All components are RoHS Compliant.

ALL DIMENSIONS ARE $\pm .010"$ 6/03/09 (2 of 2)
 619 Commercial Ave. Covina, CA 91723
 Ph. (626) 331-0517 Ex. (626) 331-8584 www.serpac.com