

REVISION AL  
DO NOT SCALE FROM THIS PRINT

UNLESS OTHERWISE NOTED TOLERANCES ARE:  
ONE PLACE DECIMALS ± .1 [2.5] THREE PLACE DECIMALS ± .005 [.13] ANGLES ± 2'  
TWO PLACE DECIMALS ± .01 [2.5] FOUR PLACE DECIMALS ± .0020 [0.05]

TITLE: ASSEMBLY .025 [1.64] SQ. POST HI-TEMP TERMINAL STRIP  
DWG NO: HMTSW-XXX-XX-XXX-X-XXXX-XX-XX  
SHEET 1 OF 2

TABLE 1  
TERMINAL SPECIFICATIONS

TERMINAL SPEC	PIN #1	PIN #1 OAL	PIN #2	PIN #2 OAL	PIN #3	PIN #3 OAL
-05	T-1S8-21-XXX-2	.335 [8.51]	N/A	N/A	N/A	N/A
-06	T-1S8-19-XXX-2	.300 [7.62]	N/A	N/A	N/A	N/A
-07	T-1S8-07-XXX-2	.430 [10.92]	T-1S8-15-XXX-2	.630 [16.00]	T-1S8-16-XXX-2	.830 [21.08]
-08	T-1S8-06-XXX-2	.530 [13.48]	T-1S8-09-XXX-2	.730 [18.54]	T-1S8-11-XXX-2	.930 [23.62]
-09	T-1S8-08-XXX-2	.730 [18.54]	T-1S8-11-XXX-2	.930 [23.62]	T-1S8-20-XXX-2	1.130 [28.70]
-10	T-1S8-10-XXX-2	.830 [21.08]	T-1S8-12-XXX-2	1.030 [26.16]	T-1S8-13-XXX-2	1.230 [31.24]
-11	T-1S8-11-XXX-2	.930 [23.62]	T-1S8-20-XXX-2	1.130 [28.70]	T-1S8-19-XXX-2	1.330 [33.78]
-12	T-1S8-12-XXX-2	1.030 [26.16]	T-1S8-13-XXX-2	1.230 [31.24]	T-1S8-14-XXX-2	1.430 [36.23]
-13	T-1S8-13-XXX-2	1.230 [31.24]	T-1S8-14-XXX-2	1.430 [36.23]	N/A	N/A
-21	T-1S8-14-XXX-2	1.430 [36.23]	N/A	N/A	N/A	N/A
-22	T-1S8-15-XXX-2	.630 [16.00]	T-1S8-10-XXX-2	.830 [21.08]	T-1S8-12-XXX-2	1.030 [26.16]
-23	T-1S8-16-XXX-2	.445 [11.30]	N/A	N/A	N/A	N/A
-24	T-1S8-17-XXX-2	.480 [12.19]	N/A	N/A	N/A	N/A
-27	T-1S8-19-XXX-2	1.330 [33.78]	N/A	1.330 [33.78]	N/A	N/A
-28	T-1S8-20-XXX-2	1.130 [28.70]	T-1S8-19-XXX-2	N/A	N/A	N/A

- NOTES:  
1. TERMINAL PUSHOUT FORCE: 3 LBS. MIN.  
2. HEIGHT VARIATION BETWEEN ANY TWO ROWS SHALL BE .005 [.13] MAX (R.A. TAIL N/A).  
3. ASSEMBLE GOLD PLATE END AS SHOWN.  
4. (C) REPRESENTS CRITICAL DIMENSION FOR STATISTICAL PROCESS CONTROL.  
5. TOW & SWAY SPEC. OF 2' APPLIES TO ALL POSITIONS, POST & TAIL, IN ALL DIRECTIONS.  
6. NOTE DELETED  
7. MAXIMUM CUT FLASH: .010 [.25]  
8. INSULATOR MATERIAL: NATURAL LCP, UL 94 VO

CRITICAL DIMENSION INSPECTION TABLE

ASSEMBLY OPERATION	IN-PROCESS INSPECTION
FILL	C2
RA	C3, C4, C5
CRIMP	C6
MUTI CUT	C1

ASSEMBLY INSTRUCTIONS

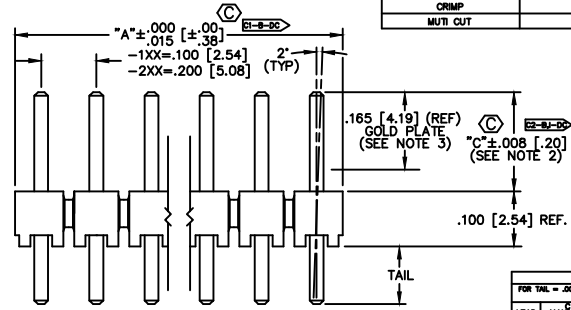


TABLE 2  
BODY SPECIFICATION

ROW/OPTION	USE BODY	TABLE 3
-S/-S-NA/-S-NE	HTSW-50-S-LCP	-XX
-S-RA/-S-RE	HTSW-50-S-RA-LCP	-RA .060 [1.52]
-D/-D-NA/-D-NE	HTSW-50-D-LCP	-RE .160 [4.06]
-D-RA	HTSW-50-D-RA-LCP	
-T/-T-NA/-T-NE	HTSW-50-T-LCP	
-T-RA	HTSW-50-TRA-LCP	
-Q	HTSW-50-T-LCP	

TABLE 4  
FOR TAIL = .500 [12.70] MIN FOR -RA & -RE  
MIN [10.16] MIN [10.16] MIN [10.16]

LEAD STYLE	MAXIMUM STRAIGHT	MAXIMUM W/RA	MAXIMUM W/RE
-05	.235 [5.97]	N/A	N/A
-06	.200 [5.08]	N/A	N/A
-07	.330 [8.38]	.130 [3.30]	N/A
-08	.430 [10.92]	.330 [8.38]	.130 [3.30]
-09	.630 [16.00]	.430 [10.92]	.330 [8.38]
-10	.730 [18.54]	.630 [16.00]	.430 [10.92]
-11	.830 [21.08]	.630 [16.00]	.430 [10.92]
-12	.930 [23.62]	.730 [18.54]	.430 [10.92]
-13	1.130 [28.70]	.830 [21.08]	.430 [10.92]
-21	1.330 [33.78]	1.130 [28.70]	1.030 [26.16]
-22	.630 [16.00]	.330 [8.38]	.230 [5.84]
-23	.345 [8.76]	.145 [3.68]	N/A
-24	.380 [9.65]	.180 [4.57]	N/A
-27	1.330 [33.78]	1.030 [26.16]	.830 [21.08]
-28	1.030 [26.16]	.830 [21.08]	.730 [18.54]

TERMINAL SPACE SPEC. (SEE ASSEMBLY INSTR.)  
-1= .100 [2.54] (FILL EVERY POS.)  
-2= .200 [5.08] (FILL E/D POS. STARTING W/ 1st & ENDING W/ LAST POS. IN BODY)

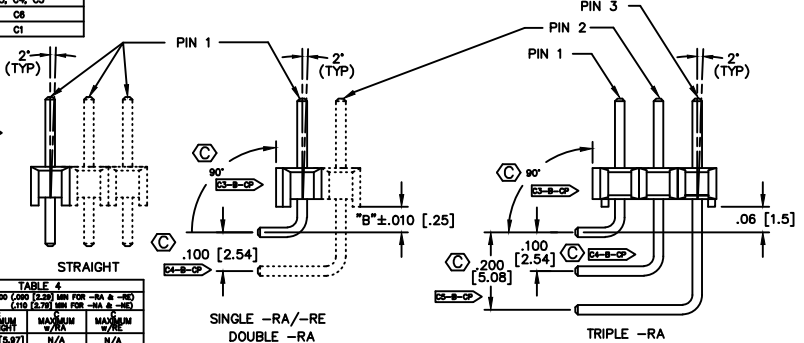
OPTION #2  
-POLARIZATION SPEC. (SEE ASSEMBLY INSTR.)  
XXX INDICATES POS. TO BE OMITTED (SEE FIG. 2)

OPTION #1  
-BLANK= STRAIGHT  
-RA= RIGHT ANGLE (SEE TABLE 3 & FIG. 3)  
-RE= EXTENDED RIGHT ANGLE (SEE TABLE 3 & FIG. 3) (SINGLE ROW ONLY) (-07, -08, -09, -13, -14, -24 N/A)  
-NA= RA OPTION WITH STRAIGHT OPTION BODY  
-NE= RE OPTION WITH STRAIGHT OPTION BODY  
-LC= LOCKING CLIP (USE LTC-01 FOR SOL. ROW & LTC-02 FOR DBL. ROW)  
-LL= LOCKING LEAD (SEE FIG. 1) (N/A WITH -RE OPTION OR SINGLE ROW (TAILS FROM .090 [2.29] TO .400 [10.16] ONLY) (N/A IN SINGLE ROW, 1 & 2 POSITIONS)  
-LA= -RA OPTION WITH -LL OPTION (SEE FIG. 2 & 3) (N/A WITH OR SINGLE ROW 1 OR 2 POSITION) (TAILS FROM .090 [2.29] TO .310 [7.87] ONLY) POST = .530 [13.48] MAX.

POST HEIGHT  
XXX = "C" (SEE TABLE 4)

ROW SPECIFICATION (SEE TABLE #2)  
-S: SINGLE  
-D: DOUBLE  
-T: TRIPLE  
-Q: TRIPLE ROW/FILL OUTER TWO ROWS

PLATING SPECIFICATIONS  
-G: 10µ GOLD IN CONTACT AREA, 10µ GOLD ON TAIL  
-T: MATTE TIN CONTACT AND TAIL  
-S: 30µ SELECTIVE GOLD IN CONTACT AREA, MATTE TIN ON TAIL  
-H: 30µ GOLD IN CONTACT AREA, 3µ GOLD ON TAIL  
-L: 10µ SELECTIVE GOLD IN CONTACT AREA, MATTE TIN ON TAIL  
-F: 3µ SELECTIVE GOLD IN CONTACT AREA, MATTE TIN ON TAIL  
-E: 50µ GOLD IN CONTACT AREA, 3µ GOLD ON TAIL (ONLY AVAILABLE ON TERMINAL SPECIFICATIONS -07, -08, -09, -13, -14, NOT AVAILABLE ON -RA, -RE, -NA, -NE, -LA)  
-TL: TIN/LEAD (90/10+/-5%) CONTACT AND TAIL (AVAILABLE ONLY ON LEAD STYLES -07, -08, & -09)  
-TM: MATTE TIN CONTACT AND TAIL  
-SM: 30µ SELECTIVE GOLD IN CONTACT AREA, MATTE TIN ON TAIL  
-LM: 10µ SELECTIVE GOLD IN CONTACT AREA, MATTE TIN ON TAIL  
-FM: 3µ SELECTIVE GOLD IN CONTACT AREA, MATTE TIN ON TAIL  
-STL: 30µ SELECTIVE GOLD IN CONTACT AREA, TIN LEAD (90/10+/-5%) TAIL



PROPRIETARY NOTE  
THIS DOCUMENT CONTAINS PROPRIETARY INFORMATION AND IS THE PROPERTY OF SAMTEC CORPORATION. IT IS TO BE USED ONLY FOR THE PURPOSES AND IN THE MANNER SPECIFIED HEREIN. IT IS NOT TO BE REPRODUCED OR TRANSMITTED IN ANY FORM OR BY ANY MEANS, ELECTRONIC OR MECHANICAL, INCLUDING PHOTOCOPYING, RECORDING, OR BY ANY INFORMATION STORAGE AND RETRIEVAL SYSTEM, WITHOUT THE WRITTEN PERMISSION OF SAMTEC CORPORATION.

EXHDP/ASSEMBLY/100 HMTSW-XX

**samtec**

520 PARK EAST BLVD. NEW ALBANY, INDIANA 47150  
PHONE (812) 944-6733 P.O. BOX 1147  
CODE 55322

MADE BY JORDAN 3-25-87 HMTSW-XXX-XX-XXX-X-XXXX-XX-XX  
SHEET 1 OF 2