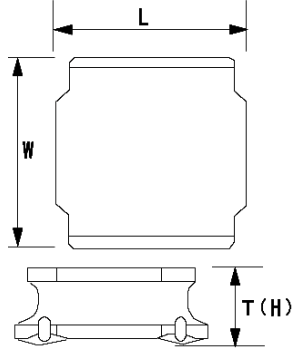


# SMD Power Inductors (NR series S type)

## NRS5020T2R2NMGJ



### ■ Features

- Item Summary  
2.2  $\mu$ H( $\pm$ 30%), 2900mA, 2900mA
- Lifecycle Stage  
Mass Production
- Standard packaging quantity (minimum)  
Taping 800pcs

### ■ Products characteristics table

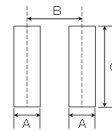
CaseSize (EIA/JIS)	-/5020
Inductance	2.2 $\mu$ H( $\pm$ 30%)
Inductance Measuring Frequency	100kHz
Rated Current -Saturation Current	2900mA
Rated Current -Temperature Rise Current	2900mA
DC Resistance (max)	0.042 $\Omega$
Avg. of DC.Resistance	0.035 $\Omega$
Temperature Range	-25°C to 125°C
Self-resonant Frequency (min)	57MHz
RoHS Compliance	Yes
Halogen Free	Yes
Soldering Method	Reflow

### ■ External Dimensions

L	4.9mm $\pm$ 0.2
W	4.9mm $\pm$ 0.2
H	2mm max

### ■ Recommended Land Patterns

【推奨ランドパターン】  
 実装上の注意  
 ・実装状態を確認の上で使用ください。また、ご購入の際は、本製品のほんだ付けはフラットはんだ工法で行います。  
 【Recommended Land Patterns】  
 Surface Mounting  
 ・Mounting and soldering conditions should be checked beforehand  
 ・Applicable soldering process to these products is reflow soldering only.



SMD Power Inductors (NR series/NR series H type/S type /V type)

Type	A	B	C
NRS010			
NRS012			
NRS014			
NRS020	1.5	3.6	4
NRS024			
NRS030			
NR 5040, NRS040			

unit:mm

The data is reference only. Electrical characteristics vary depending on environment or measurement condition. TAIYO YUDEN reserves the right to make change to the Date at any time without notice. Before making final selection, please check product specification.