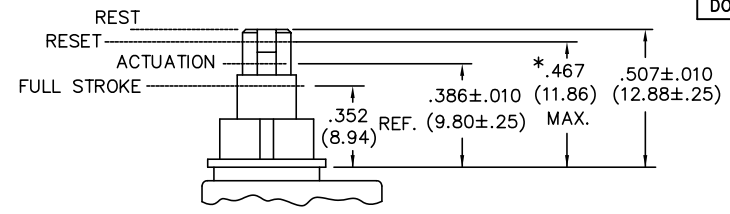
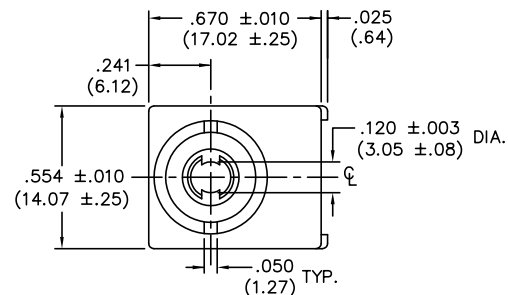


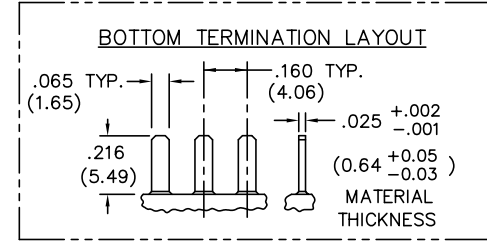
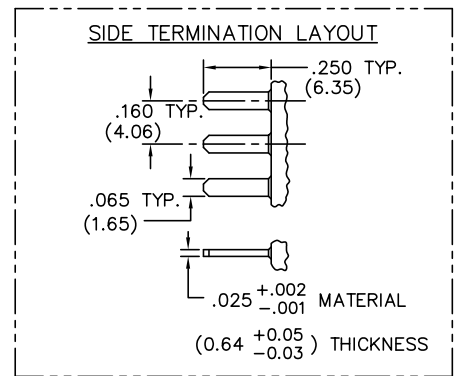
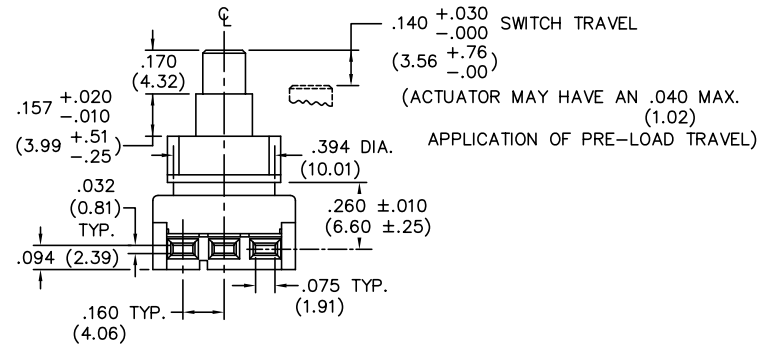
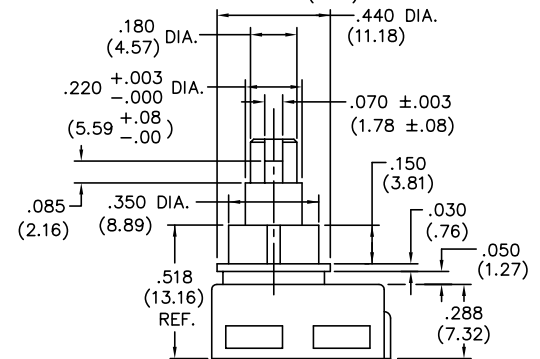
E
D
C
B
A

DIMENSIONS IN INCHES (MILLIMETERS)
DO NOT SCALE DRAWING
Dwg. No. GC-536C-0111

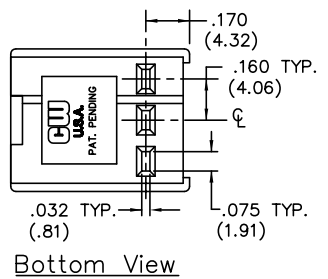


SWITCH TRAVEL SPECIFICATIONS

* Mating Part can Pre-Load Actuator down to .467 (11.86) max..



TERMINATION - Insert male tabs into switch housing using side or bottom termination option. Refer to termination option layout for dimensions."




Bottom View

1 2 3 4 5 6 7 8 9 10

FORM-B3 REVISIONS

THIS INFORMATION IS CONFIDENTIAL AND PROPRIETARY TO CW INDUSTRIES INCORPORATED AND ITS AFFILIATES. IT MAY NOT BE DISCLOSED TO ANYONE, OTHER THAN CW INDUSTRIES PERSONNEL, WITHOUT WRITTEN AUTHORIZATION FROM CW INDUSTRIES INCORPORATED, SOUTHAMPTON, PENNSYLVANIA USA.

 <p>Southampton, Pa. 18966</p>		<p>Title: SWITCH ASSEMBLY PUSH ON -PUSH OFF S.P.D.T. W/CUSTOM KNOB</p>	
		<p>Division: SWITCH</p>	
<p>TOLERANCES UNLESS OTHERWISE SPECIFIED</p>		<p>METRIC</p>	
<p>2 Place Decimal ±.010</p>		<p>1 Place Dec. ±.25mm</p>	
<p>3 Place Decimal ±.005</p>		<p>2 Place Dec. ±.13mm</p>	
<p>Angles ±1°</p>			
<p>Made for: CW IND.</p>			
<p>Drawn by: DGW 11-17-2010</p>			
<p>Checked by: G. Guld 11-18-10</p>			
<p>Approval: EJP 11/19/10</p>			
<p>Dwg. No. GC-536C-0111</p>			