

F
D
C
B
A

THIS INFORMATION IS CONFIDENTIAL AND PROPRIETARY TO CW INDUSTRIES INCORPORATED AND ITS AFFILIATES. IT MAY NOT BE DISCLOSED TO ANYONE OTHER THAN CW INDUSTRIES PERSONNEL, WITHOUT WRITTEN AUTHORIZATION FROM CW INDUSTRIES INCORPORATED, SOUTHAMPTON, PENNSYLVANIA USA.

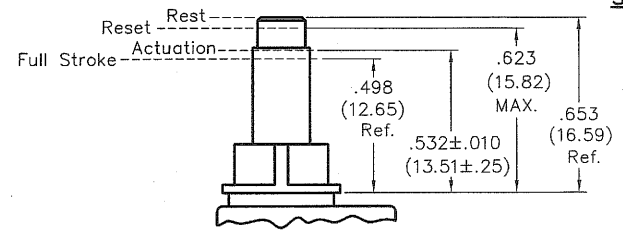
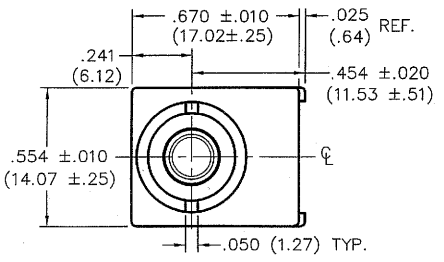
DIMENSIONS IN INCHES (MILLIMETERS)
DO NOT SCALE DRAWING

Dwg. No. GC-536A-0315

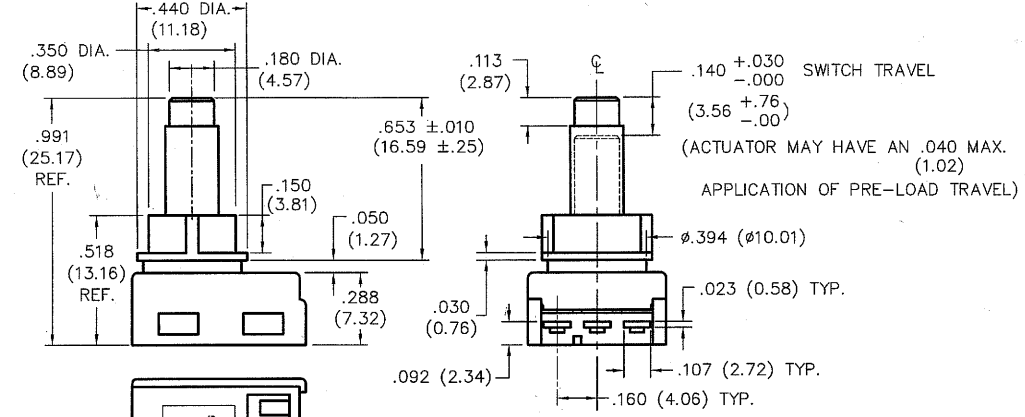
SPECIFICATIONS:

MATERIALS:

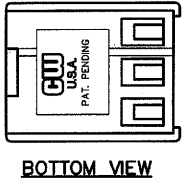
- HOUSING & BASE - Nylon and or Glass Filled
Nylon 6/6 UL 94-V2 minimum
- ACTUATOR - Nylon 6/6 UL 94-V2 minimum
- MOVING CONTACT - Copper Alloy/Phos. Bronze Silver Plated
- STATIONARY CONTACT - BeCu 174 Alloy, Silver Plated
- ① ELECTRICAL RATING - 1A. 125V.A.C.
3A. 14-24V.D.C.
- MECHANICAL PERFORMANCE - 30,000 Cycles minimum
at Rated Load.
- OPERATING FORCE - 9 - 13ozs.
2.5 - 3.5 Newtons,
Spec. as Tested
- VOLTAGE DROP - Less than 100mV @ 1A.
- ① OPERATING TEMPERATURE - 105°C Max.
- TERMINATION - Switch mates with CW wire crimp terminal
part no. G-20-217. Terminals insert & lock
into slots shown on base of switch.
Terminal can accept single 18 AWG. or Double
Terminated 24 AWG. Wire Leads.



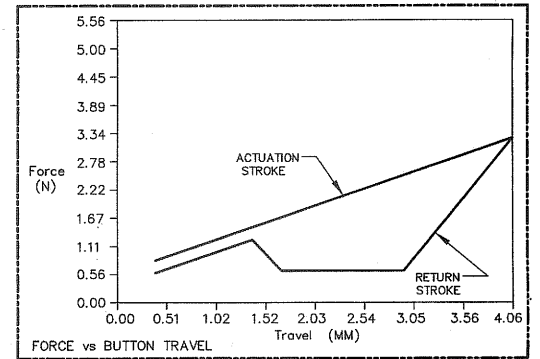
SWITCH TRAVEL SPECIFICATIONS



(ACTUATOR MAY HAVE AN .040 MAX. (1.02) APPLICATION OF PRE-LOAD TRAVEL)



BOTTOM VIEW



1	2	3	4	5	6	7	8	9	10
<p>B-FORMAT 2002</p> <p>REVISIONS</p> <p>RELEASED: 07/09/2010 EJP</p> <p>ADDED 24 TO 3A:14VDC AND ADDED OPERATING TEMP. 105°C MAX. D&W 3-15-2012</p> <p>MAR 16 2012</p>									

PDF FILE MADE	<p>CW INDUSTRIES Southampton, Pa. 18966</p> <p>TOLERANCES UNLESS OTHERWISE SPECIFIED</p> <table border="1"> <tr> <td>2 Place Decimal ±.010</td> <td>METRIC</td> </tr> <tr> <td>3 Place Decimal ±.005</td> <td>1 Place Dec. ±.25mm</td> </tr> <tr> <td>Angles ±1°</td> <td>2 Place Dec. ±.13mm</td> </tr> </table>	2 Place Decimal ±.010	METRIC	3 Place Decimal ±.005	1 Place Dec. ±.25mm	Angles ±1°	2 Place Dec. ±.13mm	<p>Title: SWITCH ASSEMBLY PUSH ON-PUSH OFF S.P.D.T.</p>
	2 Place Decimal ±.010	METRIC						
	3 Place Decimal ±.005	1 Place Dec. ±.25mm						
	Angles ±1°	2 Place Dec. ±.13mm						
<p>Made for: CW IND.</p>	<p>Division: SWITCH</p>							
<p>Drawn by: EJP 07/09/2010</p>	<p>Dwg. No. GC-536A-0315</p>							
<p>Checked by: G. Gold 11-08-10</p>								
<p>Approval: G. Gold 11-08-10</p>								

MASTER