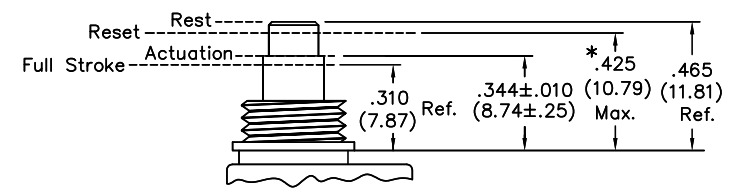
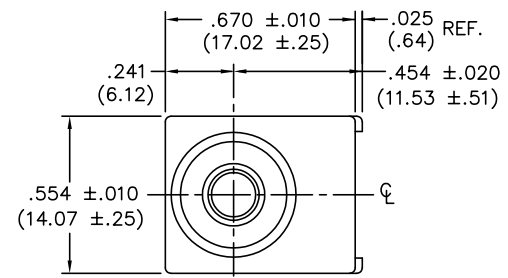


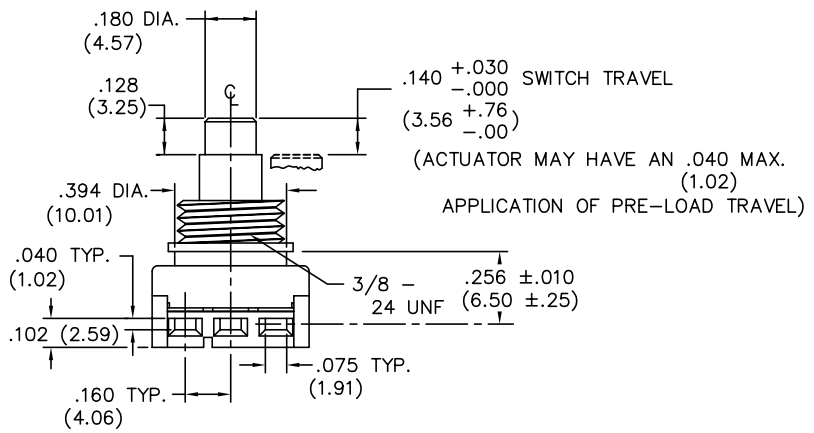
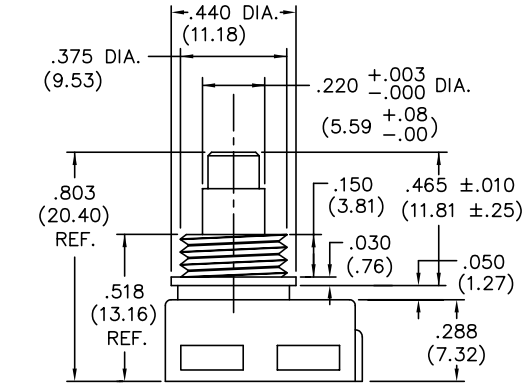
E
D
C
B
A

DIMENSIONS IN INCHES (MILLIMETERS)
DO NOT SCALE DRAWING

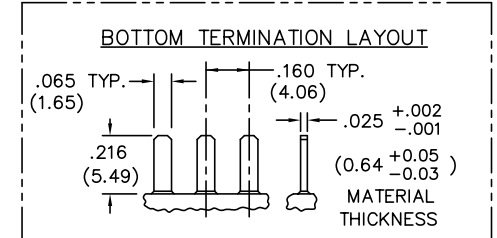
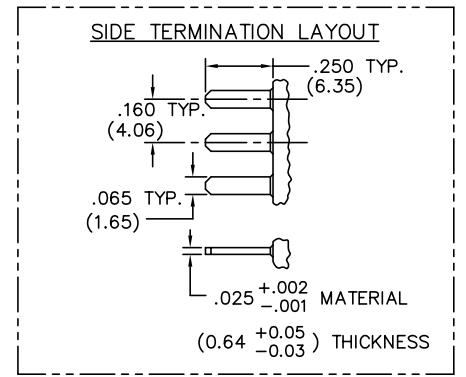
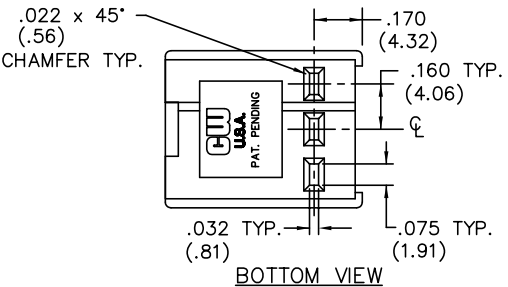
Dwg. No.
GC-536-0107



SWITCH TRAVEL SPECIFICATIONS
* Mating Part can Pre-Load Actuator down to .425 (10.79) max..



APPLICATION OF PRE-LOAD TRAVEL
(ACTUATOR MAY HAVE AN .040 MAX. (1.02))



TERMINATION - Insert male tabs into switch housing using side or bottom termination option. Refer to termination option layout for dimensions."

1 2 3 4 5 6 7 8 9 10

FORM-B3	REVISIONS	THIS INFORMATION IS CONFIDENTIAL AND PROPRIETARY TO CW INDUSTRIES INCORPORATED AND ITS AFFILIATES. IT MAY NOT BE DISCLOSED TO ANYONE, OTHER THAN CW INDUSTRIES PERSONNEL, WITHOUT WRITTEN AUTHORIZATION FROM CW INDUSTRIES INCORPORATED, SOUTHAMPTON, PENNSYLVANIA USA.	

<p>Southampton, Pa. 18966</p> <p>TOLERANCES UNLESS OTHERWISE SPECIFIED</p> <p>2 Place Decimal ±.010 METRIC</p> <p>3 Place Decimal ±.005 1 Place Dec. ±.25mm</p> <p>Angles ±1° 2 Place Dec. ±.13mm</p> <p>Made for: CW IND.</p> <p>Drawn by: DGW 11-17-2010</p> <p>Checked by: G. Guild 11-18-10</p> <p>Approval: EJP 11/19/10</p>	<p>Title: SWITCH ASSEMBLY PUSH ON-PUSH OFF S.P.D.T. W/SPECIAL BUTTON</p>
	<p>Division: SWITCH</p>
	<p>Dwg. No. GC-536-0107</p>