

DISCO-B4

Automotive Vehicle Location solution (AVL)

- High Sensivity Satellite Navigation
- AGPS capable
- Communication via Quad Band GSM
- SMS, Data, GPRS, TCP/IP, Email
- IP69K proof casing
- User configurable
- Thief Alert / Motion Detection
- Online Tracking
- Fleetmanagement
- Car Security and Recovery
- Drivers Logbook/History
- Territory Management / Geofencing
- Remote administration & firmware update
- Fully approved (CE, e1)
- Option: CAN / FMS interface



The FALCOM DISCO-B4

is a free configurable smart tracking device which can be fully adapted to user requirements. Its main purpose is to act as a mobile client for various system solutions like AVL, fleet management, vehicle security and recovery. The device can operate fully autonomous and is able to interact using sensors and actors.

It can be adapted to existing tracking solutions and can be easily configured to gather or exchange relevant information with servers or users directly. An often used example is to send status reports or verbose alert messages directly via SMS to users and/or via TCP to tracking servers.

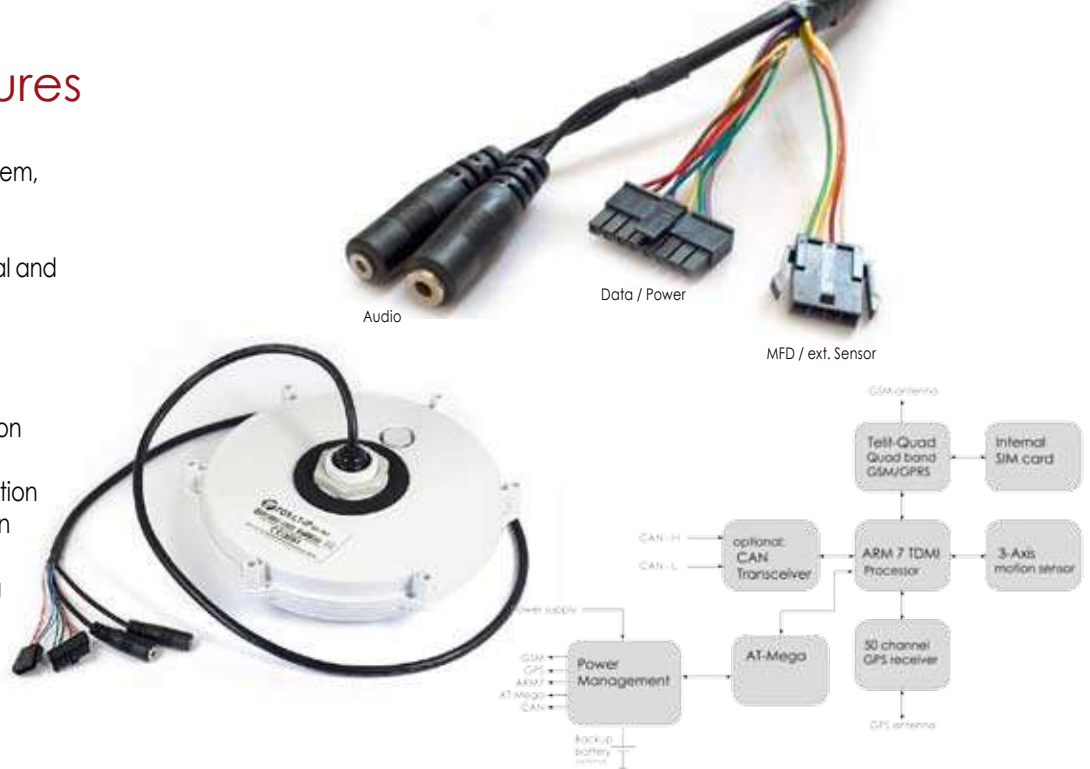
Users benefit most from combining comfort and security aspects – for example having regular voice calls as well as spy calls in emergency cases. Drivers logbook and data logging functionalities are combined in the history feature.

Geofencing can be used to report violations of predefined routes or areas (for example if a car enters or leaves a specific area/no-go-zones).

All of these features are perfectly integrated in a device concept which significantly reduces time-to-market and provides low cost tracking and security solutions.

Software features

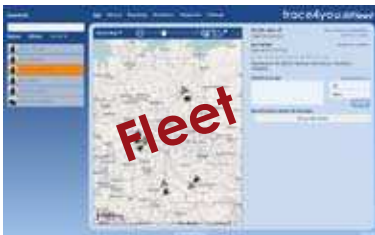
- PFAL commands for full control
- Intelligent and flexible alarm system, suitable for most applications
- Customizable device messages
- Easy to combine with most digital and analogue sensors
- Drivers Logbook / History
- Geofence, distance calculation
- Trip management
- Local and remote communication
- Optional
 - Encrypted communication
 - Security authentication
- Remote access
 - Status reports / tracking
 - Commands
 - Configuration
 - Firmware update



Applications

- Real time online tracking
- Fleet management / monitoring
- Security / emergency services
- Real time satellite navigation
- Territory management
- Personalized drivers logbook
- Route verification
- Trip management / distance calculations
- Theft protection
- Toll collection / pay as you drive
- Compatible with FALCOM Trace4you Server solution

trace4you



Technical specification

GSM core	Physical characteristics
Quad-Band GSM/GPRS engine	Dimensions (DxH): 210 x 40 (75) mm
GSM Frequency Bands: 850/900/1800/1900 MHz	Weight: approx. 310 g
GPRS class 10, class B	Housing
Internet (TCP/IP/UDP/HTTP/SMTP)	PA6 Plastic
GPS core	Protection class: IP69K
50 channel GPS engine	Temperature range**
A-GPS offline / Autonomous	Operating: -40 °C to +85 °C
Protocols: NMEA, GGA, GGL, GSA,	Storage: -40 °C to +85 °C
GSV, RMC, WGS-84	GSM: -40 °C to +85 °C
Accuracy: Position < 2.5 m	Battery ¹⁾ discharging: -20 °C to +60 °C
SBAS < 2 m	Battery ¹⁾ charging: 0 °C to +45 °C
Acquisition: TTF hot start: < 1 s average	Motion sensor
TTF warm start: < 29 s average	3 axis motion sensor
TTF cold start: < 29 s average	Interfaces
Sensitivity: Acquisition: -160 dBm	4 IOs: • 3 configurable digital/analogue inputs
Tracking: -160 dBm (12 dBHz)	with open collector output (100 mA)
Cold start: -144 dBm	(2 are used for CAN feature)
Limits: Velocity: 500 m/s (972 knots)	• 1 digital input (IGN)
Altitude: 50.000 m	RS232 (RX,TX V24 level) / RS232 TTL
Processor core	SIM card reader for 1,8/3 V SIM cards
ARM7/TDMI	CAN/FMS* (up to 1 Mbps)
8 MB Flash / 2 MB RAM	Audio jacks:
	1 x Microphone (2.5mm jack)
	1 x Speaker (3.5mm jack)
Electrical characteristics	GPS / GSM Antennas
Power: +10,8 V to +32 V DC	internal antennas
Internal Lithium-Ion rechargeable battery (2150 mAh)* ¹⁾	

* Optional

** The GSM/GPRS module is fully functional (-20 °C to + 55 °C meets the 3GPP specifications) .

¹⁾ Storage and using conditions of the device with battery option are limited to the battery temperature range.

Note: Specifications and information given in this document are subject to change by FALCOM without notice.