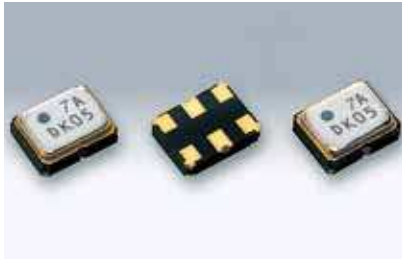


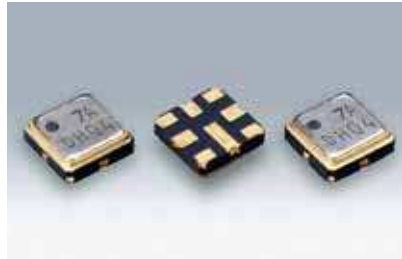
SMD Monolithic Crystal Filters

DSF223S 2POLE/DSF334S 2POLE, 3POLE



DSF223S

Actual size

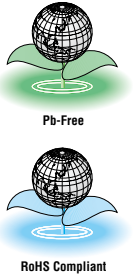


DSF334S

Actual size

Features

- 2520 size, lightweight (0.02g) and ultra miniature SMD crystal filter. Just 0.9mm high. 3030 size, lightweight (0.03g) and miniature SMD crystal filter. Just 0.9mm high.
- Excellent shock and vibration resistance.
- Low spurious
- Applications
 - Radio communications



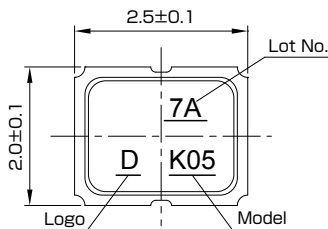
Standard Specification

Type	DSF223SAF		DSF334SAF		
Model	DA3030AN	D50015AM	DA1030AM	D63420FM	D85330FM
Pole	2	2	2	3	3
Overtone Order	Fundamental	Fundamental	Fundamental	Fundamental	Fundamental
Nominal Frequency	130.000 MHz	50.000 MHz	110.520 MHz	63.400 MHz	85.380 MHz
Pass Bandwidth	±15kHz min./3dB	±7.5kHz min./3dB	±15kHz min./3dB	±10kHz min./3dB	±15kHz min./3dB
Stop Bandwidth	±100kHz max./20dB	±25kHz max./13dB	±60kHz max./18dB	±50kHz max./25dB	±60kHz max./25dB
Ripple	1dB max.	1dB max.	1dB max.	1dB max.	1dB max.
Insertion Loss	4dB max.	3.5dB max.	4dB max.	3.5dB max.	5dB max.
Guaranteed Attenuation	70dB min.	60dB min.	70dB min.	70dB min.	70dB min.
Terminating Impedance	200Ω//1.7pF	750Ω//3pF	200Ω//3pF	300Ω//0.5pF	400Ω//0.5pF
Operating Temperature Range	-20~+70°C				
Packing Unit	3000pcs./reel(φ180)		2000pcs./reel(φ180)		

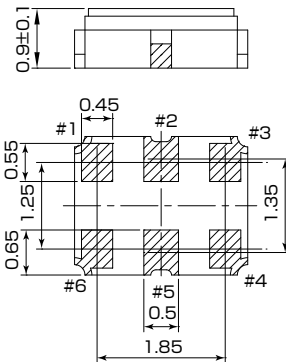
Consult our sales representative for other specifications.

DSF223S

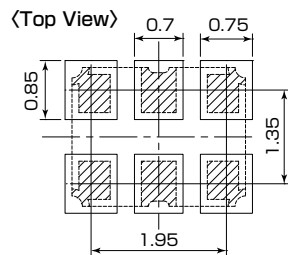
Dimensions[mm]



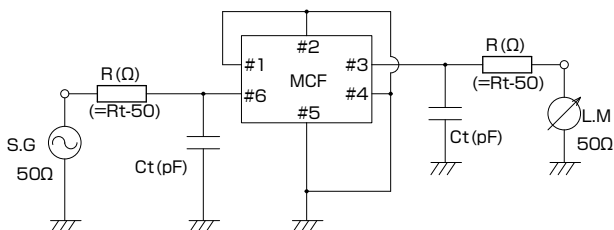
Pin No.	Connection
#1	GND.
#2	GND.
#3	OUTPUT
#4	GND.
#5	GND.
#6	INPUT



Recommended Land Pattern[mm]

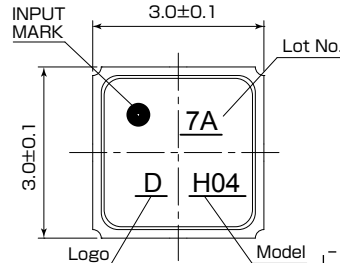


Measurement Circuit

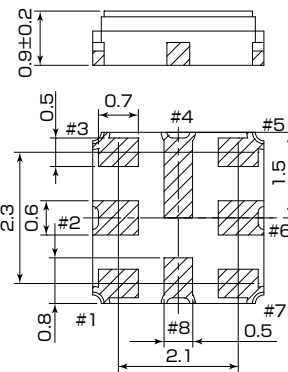


DSF334S

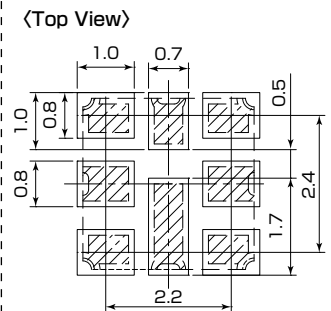
Dimensions[mm]



Pin No.	Connection
#1	INPUT
#2	GND.
#3	GND.
#4	GND.
#5	OUTPUT
#6	GND.
#7	GND.
#8	GND.



Recommended Land Pattern[mm]



Measurement Circuit

