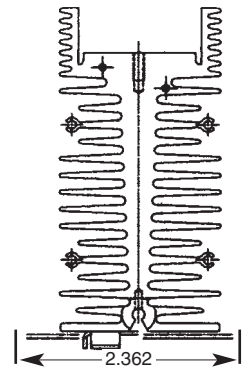
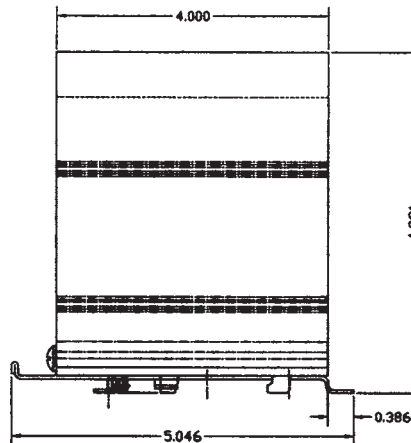


## SOLID STATE RELAYS

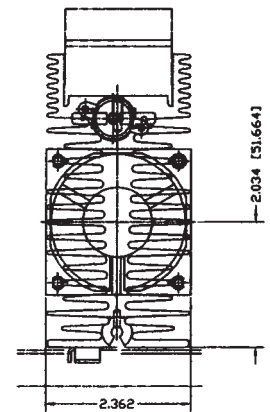
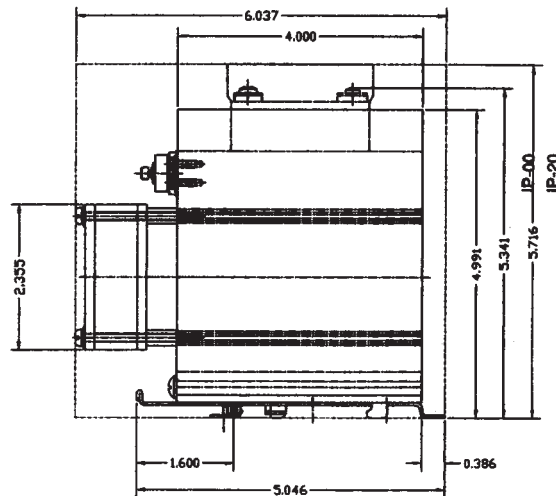
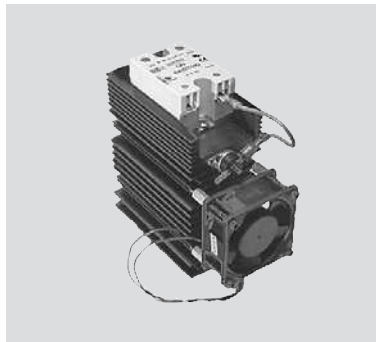
### HS10 HEATSINK



#### ORDERING INFORMATION:

Model #	Description
HS10	Heatsink 1.1°C/W (For Single Phase SSR's)

### HS12 HEATSINK



(Relay Optional)

#### ORDERING INFORMATION:

Model #	Description
HS12	Heatsink 0.55°C/W (For Single Phase SSR's)

**DIMENSIONS:** inches (mm)

**TOLERANCES:** ±0.02 inches

**MATERIAL:** AISI 6063-T5 Aluminum

**FINISH:** Black Anodized