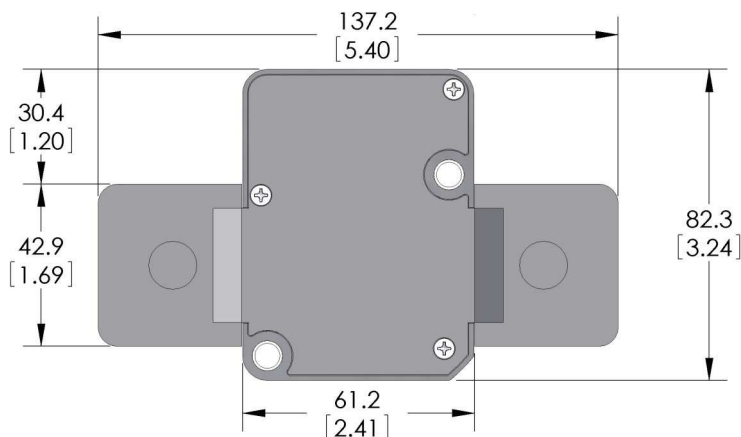
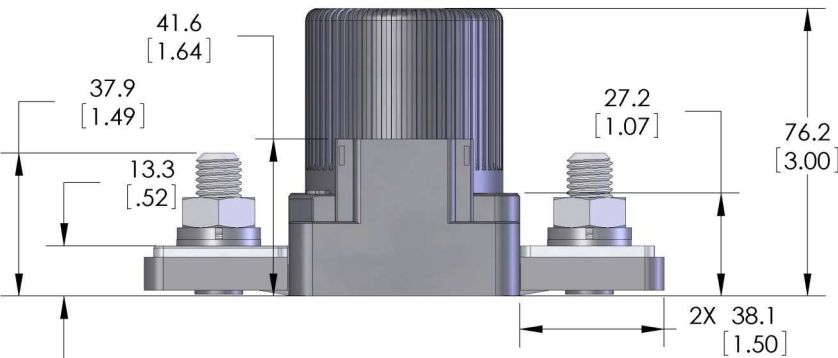


## Key Features

<b>EPIC® Seal</b>	Ceramic to metal braze. Gas filled hermetic chamber protects key components. Exceeds IP69K standard
<b>Temperature</b>	Tested to temperatures up to 200°C
<b>Contacts / Form</b>	Silver / SPST / NO
<b>Coil</b>	Efficient two coil design with no PWM or EMI emissions. Coil suppression built in
<b>High Shock and Vibration</b>	For rugged environments, off-road and tracked vehicles
<b>Installation</b>	Not direction sensitive
<b>Made in USA</b>	Designed and manufactured in the USA
<b>Reference</b>	MIL-R-6106, RoHS



### Power Terminals

Zinc Plated M12 X 1.75 Bolt  
Stainless M12 X 1.75 Nut  
Stainless Lock Washer  
Stainless Flat Washer

Torque 15-22 Nm [130-200 in-lb]

### Mounting Hardware

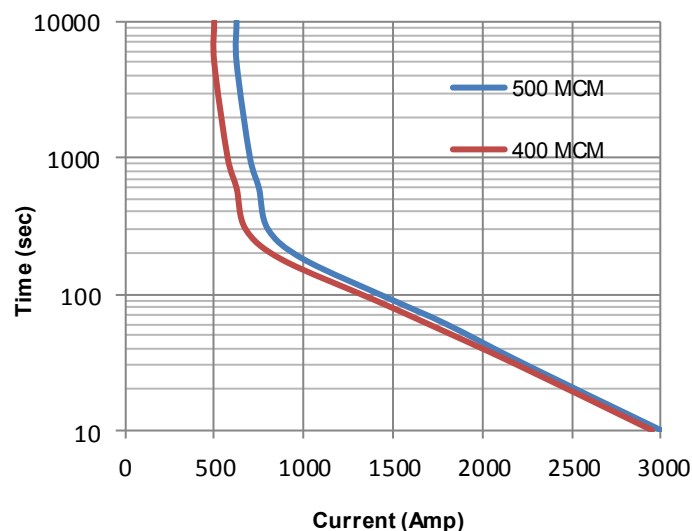
M6 [No. 8] Bolts (not incl.)

Torque 2-4 Nm [18-35 in-lb]

**Mating Connector**  
Deutsch DT06-08S

\*GIGAVAC sells mating connector as assembly or component package. See Accessories pg 2.

Current Carry vs Time  
with 85°C terminal temperature rise



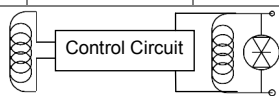
Technical Specification	
Continuous Current	600A w/ 500MCM (see graph on reverse)
Max Current—1 sec	4000A
Max Current—10 sec	3000A
Max Current—90 sec	1500A
Contact Voltage Drop (max)	150mV at 600A
Insulation Resistance (min)	100MΩ (50MΩ after life)
Dielectric Withstanding	1500VRMS (1050 VRMS after life)
Operate Time (max)	20 msec (include bounce)
Release Time (max)	12 msec
Weight	1.9 lb (900 grams)

Resistive Load Switching	
600A at 24 VDC	100,000 cycles
Mechanical Life	300,000 cycles
Fault Interrupt @ 28VDC	4000A

Environmental Specifications	
Seal	Hermetic, 10 E-9 atm cc/sec
Temperature Range	-55°C to +90°C
Shock	Sawtooth @ 20G, 11ms, ½ Sine @ 25G, 11ms
Vibration	10-2000 Hz, 20G
Water / Steam	2750 psi waterjet, 105 psi steam, boiling water
Salt Spray Corrosion	MIL-STD-810G
Resistant to corrosion, chemicals, and fungal growth	

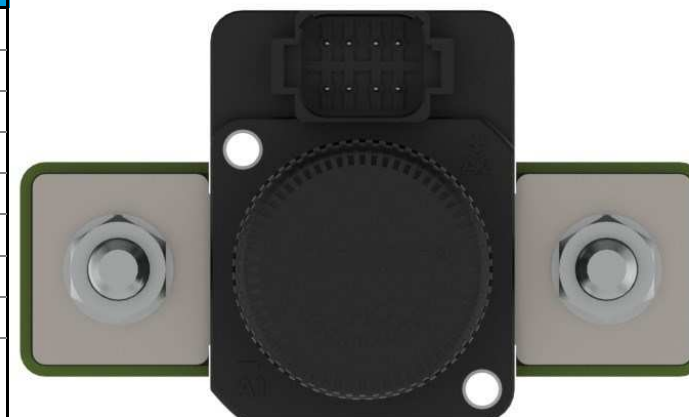
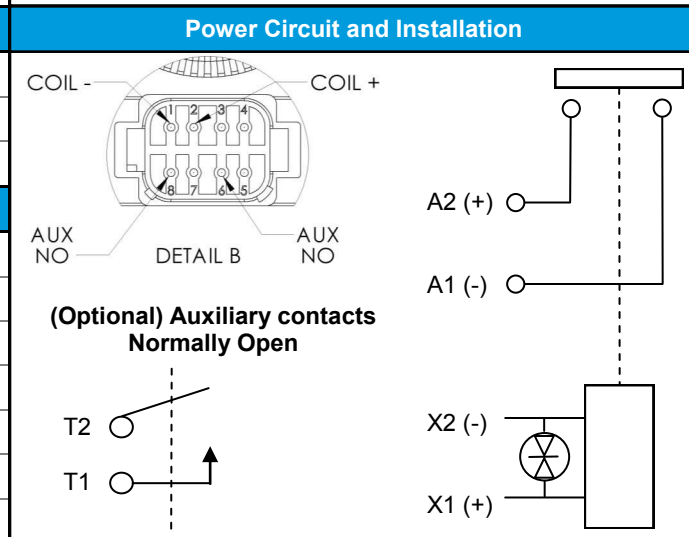
Auxiliary contacts (optional) - Form A, SPST Normally Open	
Switching Current (max)	1A at 28VDC
Switching Current (min)	0.1mA at 5V

Coil Ratings at 25°C	
*Contact factory for additional coil voltages	

Coil P/N Designation	B	C	F
Coil Voltage, Nominal	12 VDC	24 VDC	48 VDC
Coil Voltage, Max	16 VDC	32 VDC	64 VDC
Pick-Up Voltage, Max	8 VDC	16 VDC	30 VDC
Drop-Out Voltage	0.5 to 4.5 VDC	0.5 to 7.5 VDC	2 to 15 VDC
Pick-Up Current, Max (75 ms)	3.8 A	1.9 A	0.9 A
Coil Current	0.64 A	0.32 A	0.16 A
Coil Power	7.8 W	7.8 W	7.8 W
Internal Coil Suppression			
Coil Back EMF	55 V		125 V
Transients, Max (13 ms)	±50 V		±75 V
Reverse Polarity	16 V	32 V	64 V

Options and Accessories	
0696-1	Assembled mating Deutsch connector for non-aux GX16 versions
0696-2	Components (not assembled) for mating Deutsch connector, non-aux
0697-1	Assembled mating Deutsch connector for GX16 versions w/ auxiliaries
0697-2	Components (not assembled) for mating Deutsch connector, w/ aux

Ordering Key
<p><b>MX16 E</b></p> <p><b>Coil Voltage:</b>  <b>B = 12V</b>  <b>C = 24V</b>  <b>F = 48V</b></p> <p><b>Auxiliary Contacts:</b>  <b>Blank = none</b>  <b>B = SPST, Normally Open</b></p>



		P.O. Box 4428 Santa Barbara, CA 93140
<a href="http://www.gigavac.com">www.gigavac.com</a>	<a href="mailto:info@gigavac.com">info@gigavac.com</a>	<b>+805-684-8401</b>
Rev 2 6/19/13	© 2013 GIGAVAC, LLC	Page 2 of 2 <b>MX16</b>