

PART NAME	PLASTIBOX (STYLE A)	PART No.	PT-11338 & PS-11339
-----------	---------------------	----------	---------------------

MATERIAL: HIGH-IMPACT ABS

COLOR: BLACK OR GRAY

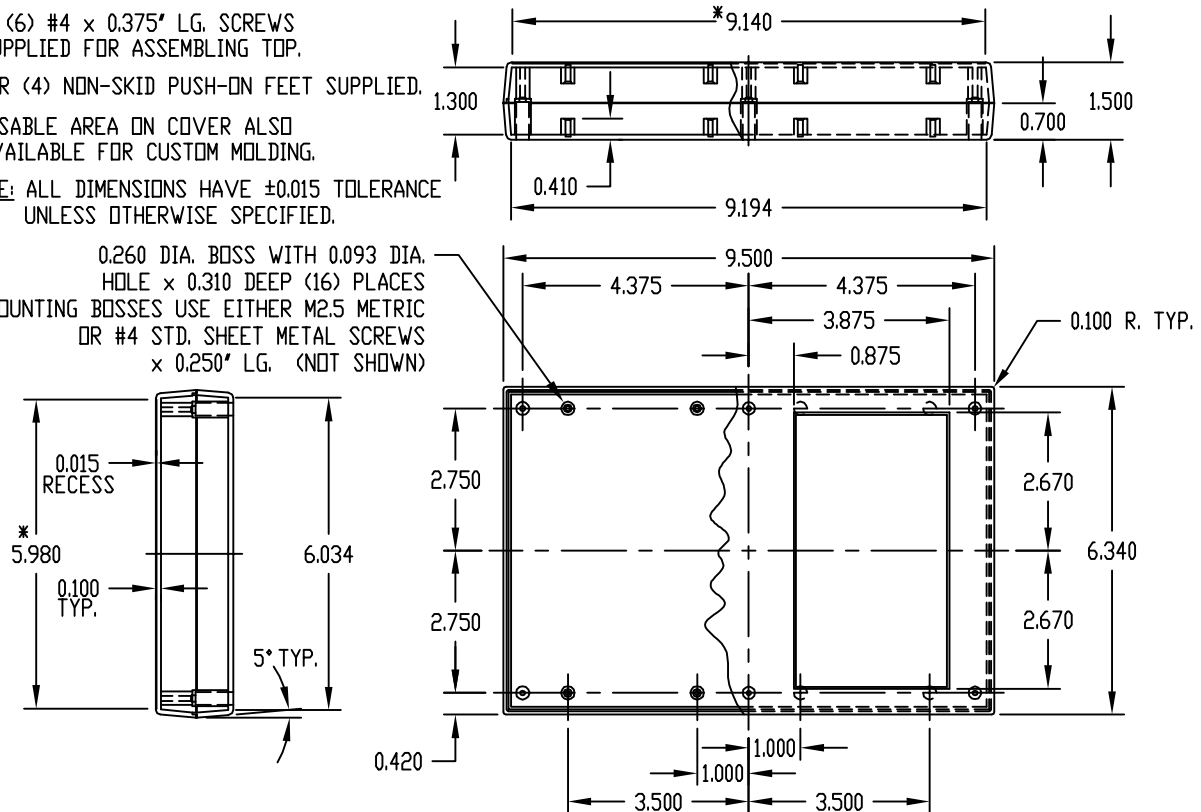
SIX (6) #4 x 0.375" LG. SCREWS
SUPPLIED FOR ASSEMBLING TOP.

FOUR (4) NON-SKID PUSH-ON FEET SUPPLIED.

*-USABLE AREA ON COVER ALSO
AVAILABLE FOR CUSTOM MOLDING.

NOTE: ALL DIMENSIONS HAVE ± 0.015 TOLERANCE
UNLESS OTHERWISE SPECIFIED.

FINISH: PREFIX PS - TEXTURED BODY WITH SMOOTH TOP INSERT.
PREFIX PT - TEXTURED BODY WITH TEXTURED TOP.



PART NAME	PLASTIBOX (STYLE B)	PART No.	PSS-11350 & PNS-11351
-----------	---------------------	----------	-----------------------

MATERIAL: HIGH-IMPACT ABS

COLOR: BLACK OR GRAY

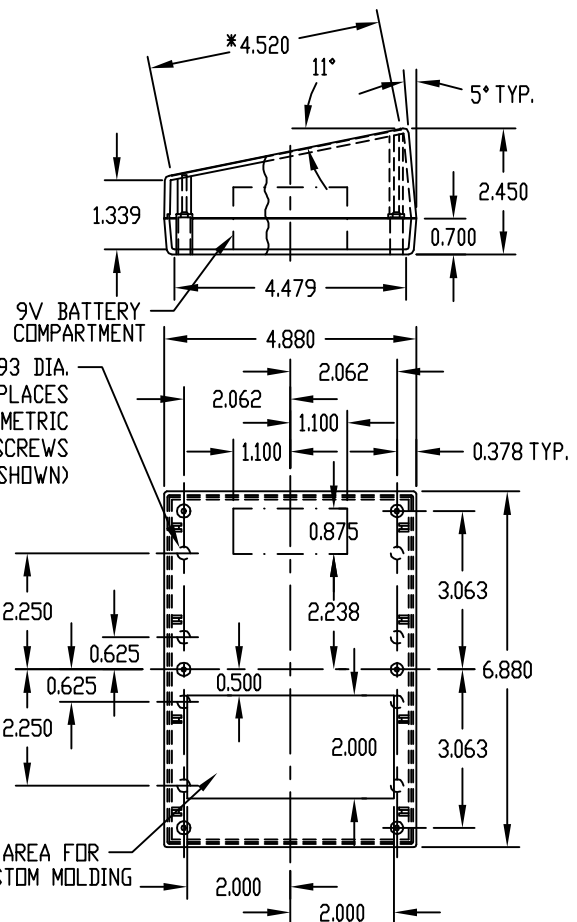
FINISH: PREFIX PSS- TEXTURED BODY WITH SMOOTH
TOP AND END INSERTS.

PREFIX PNS- TEXTURED BODY WITH SMOOTH
TOP AND END INSERTS AND 9V
BATTERY COMPARTMENT.

SIX (6) #4 x 0.375" LG. SCREWS
SUPPLIED FOR ASSEMBLING TOP.

FOUR (4) NON-SKID PUSH-ON FEET SUPPLIED.

*-USABLE AREA ON COVER ALSO
AVAILABLE FOR CUSTOM MOLDING.



NOTE: ALL DIMENSIONS HAVE ± 0.015 TOLERANCE
UNLESS OTHERWISE SPECIFIED.