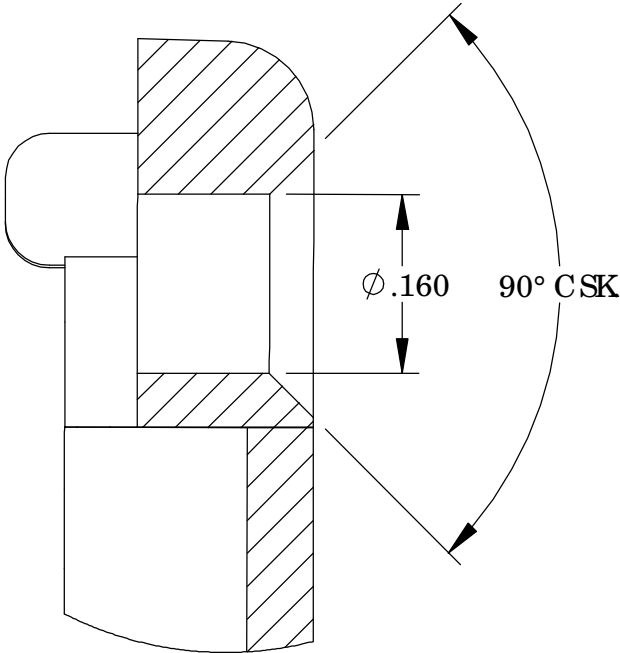
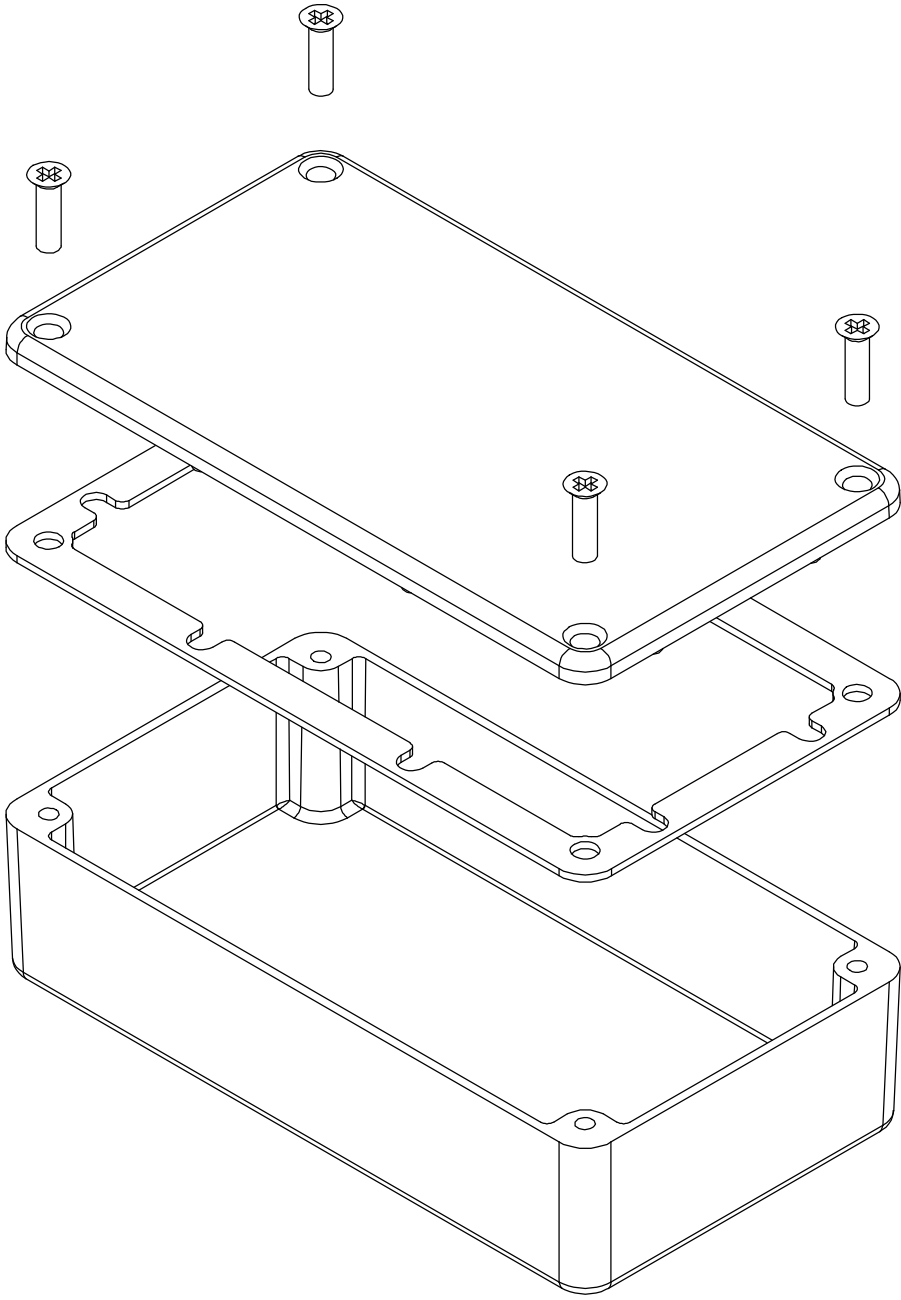


THE INFORMATION CONTAINED IN THIS DRAWING IS THE SOLE PROPERTY OF
BUD INDUSTRIES INC. ANY REPRODUCTION IN PART OR WHOLE WITHOUT
THE WRITTEN PERMISSION OF BUD INDUSTRIES INC. IS PROHIBITED.

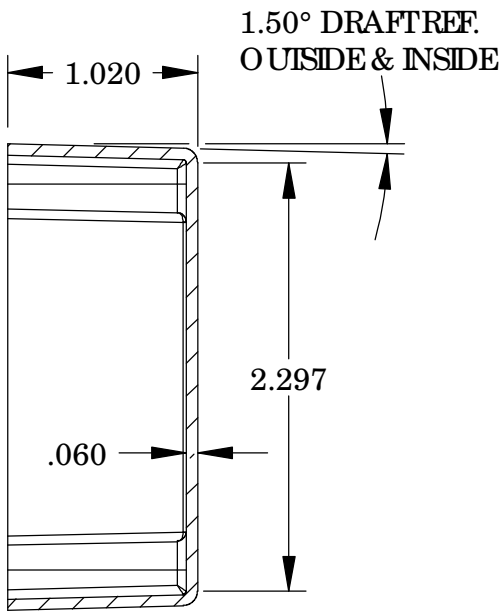
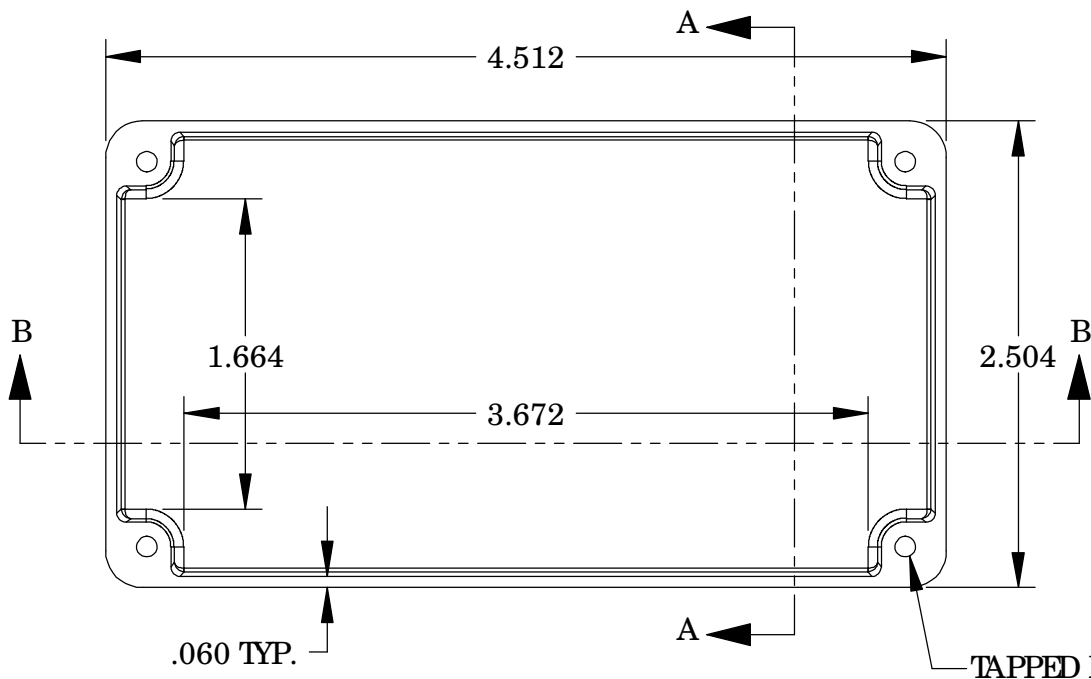
DWG. NO.	CN-5703
ISSUE	REVISIONS

MATERIAL- ALUMINUM ALLOY # ADC-12
FINISH- NATURAL (CONTACTBUD FACTORY FOR
ALTERNATE FINISHES)
GASKET- RATED IP65 NEO PRENE, SELF-ADHESIVE,
3mm THICK, COLOR BLACK
SCREWS- STAINLESS STEEL, M3.5 x 12mm LG.,
CSK HEAD, SELF-THREADING

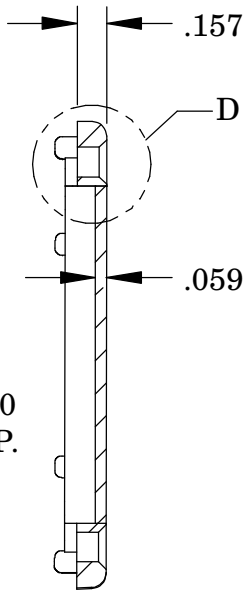
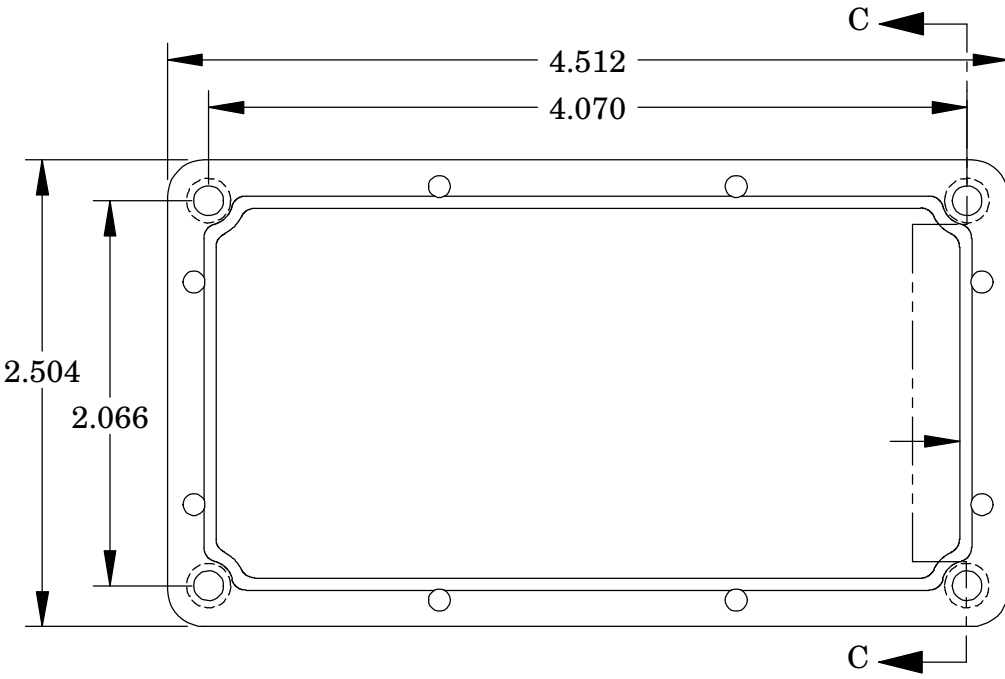
ALL HOLE DIAMETERS HAVE ±.005 TOLERANCE
ALL OTHER DIMENSIONS HAVE ±.015 TOLERANCE
ENCLOSURES ARE SHIPPED UNASSEMBLED WITH
ALL ITEMS SHOWN.



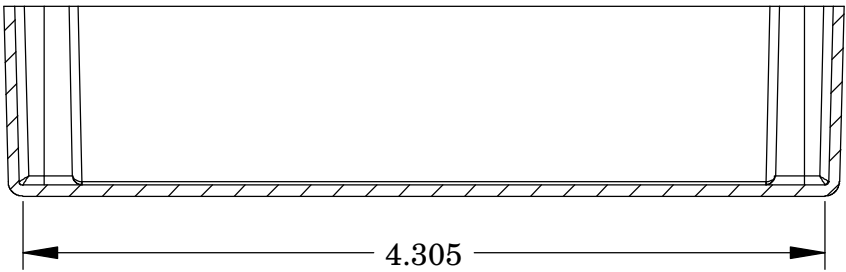
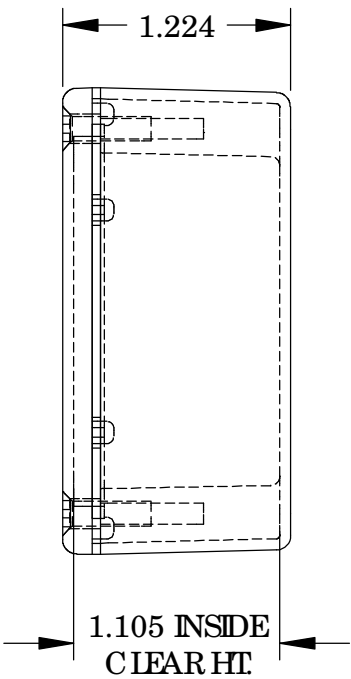
DETAIL D
SCALE 6 : 1



SECTION A-A



SECTION C-C



SECTION B-B

BODY

COVER

PARTS LIST					
+/- .005 BETWEEN HOLE CENTERS +/- .015 FROM SHEARED EDGE +/- .032 FROM A BENT SURFACE +/- .062 BETWEEN ASSEMBLED SURFACES UNLESS OTHERWISE SPECIFIED MATERIAL: FINISH: AS NOTED AS NOTED			CAD GENERATED DRAWING, DO NOT MANUALLY UPDATE		
			APPROVALS	DATE	
			DRAWN DAB	3-31-06	
			CHECKED		
DO NOT SCALE DRAWING			APPROVED		
QTY.	USED ON	SCALE	CAD FILE	DWG. NO. CN-5703	REV.
				SHEET 1 OF 1	