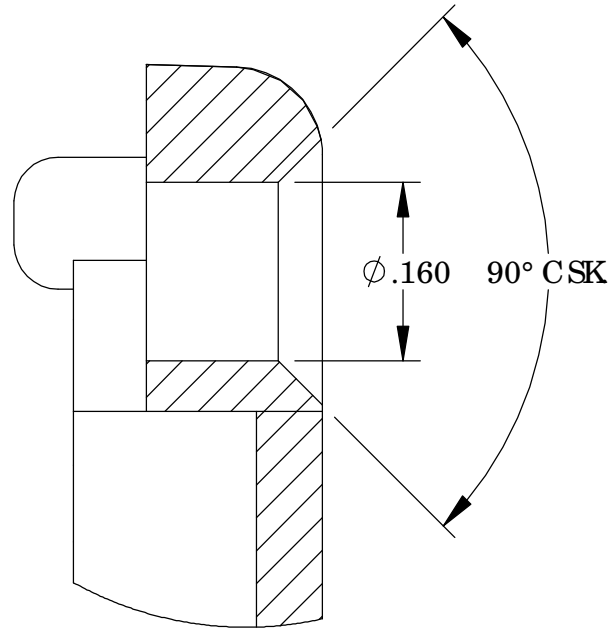
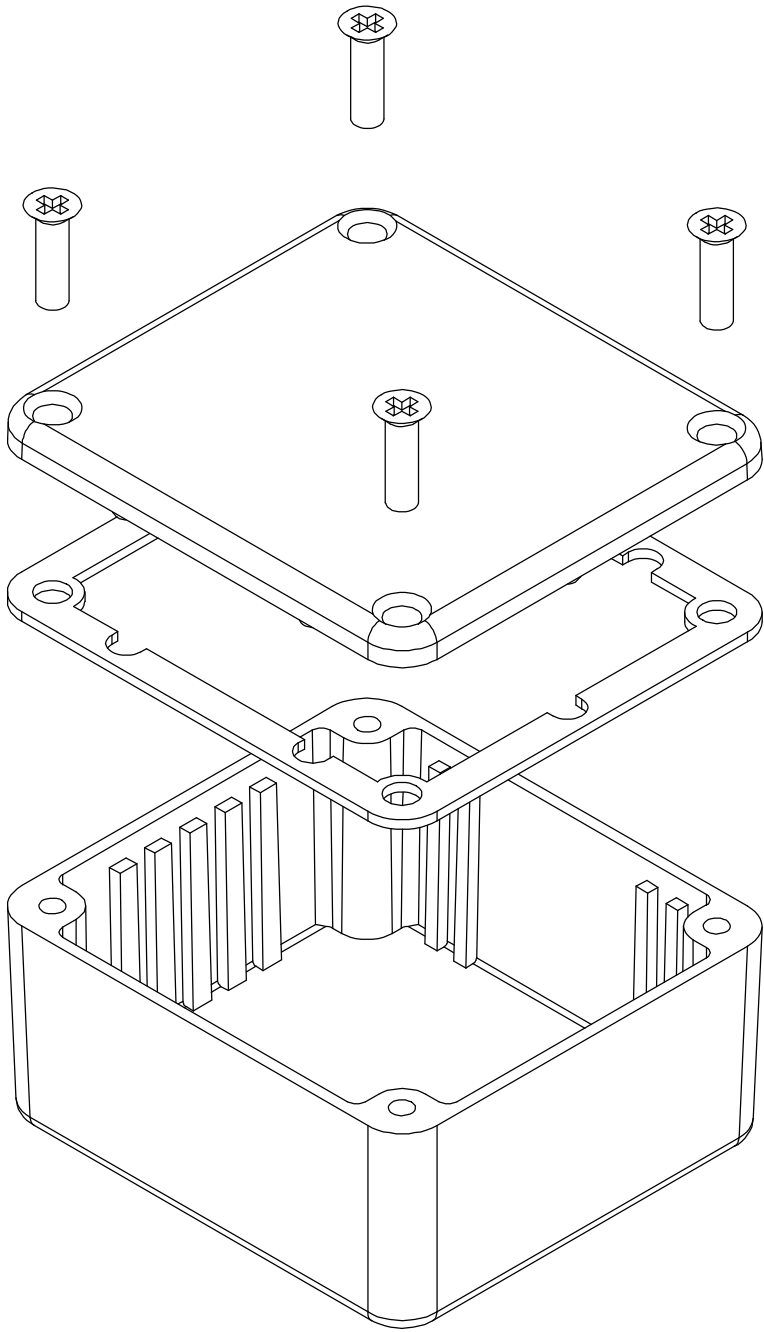


THE INFORMATION CONTAINED IN THIS DRAWING IS THE SOLE PROPERTY OF
BUD INDUSTRIES INC. ANY REPRODUCTION IN PART OR WHOLE WITHOUT
THE WRITTEN PERMISSION OF BUD INDUSTRIES INC. IS PROHIBITED.

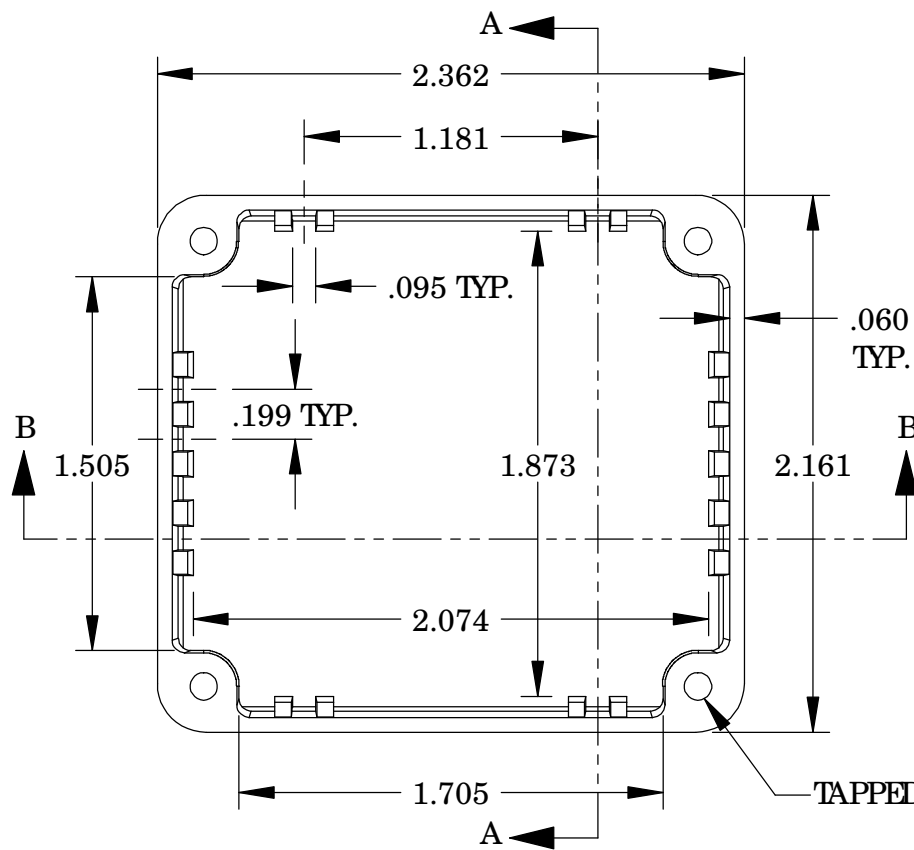
DWG. NO.	CN-5700
ISSUE	REVISIONS

MATERIAL- ALUMINUM ALLOY # ADC-12
FINISH- NATURAL (CONTACT BUD FACTORY FOR
ALTERNATE FINISHES)
GASKET- RATED IP65 NEOPRENE, SELF-ADHESIVE,
3mm THICK, COLOR BLACK
SCREWS- STAINLESS STEEL, M3.5 x 12mm LG.,
CSK HEAD, SELF-THREADING

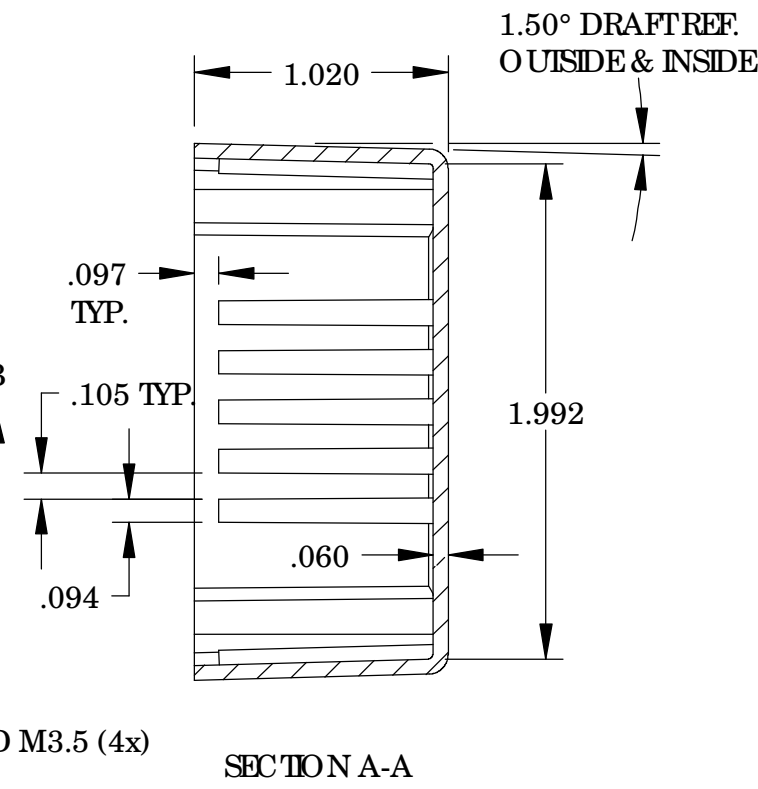
ALL HOLE DIAMETERS HAVE $\pm .005$ TOLERANCE
ALL OTHER DIMENSIONS HAVE $\pm .015$ TOLERANCE
ENCLOSURES ARE SHIPPED UNASSEMBLED WITH
ALL ITEMS SHOWN.



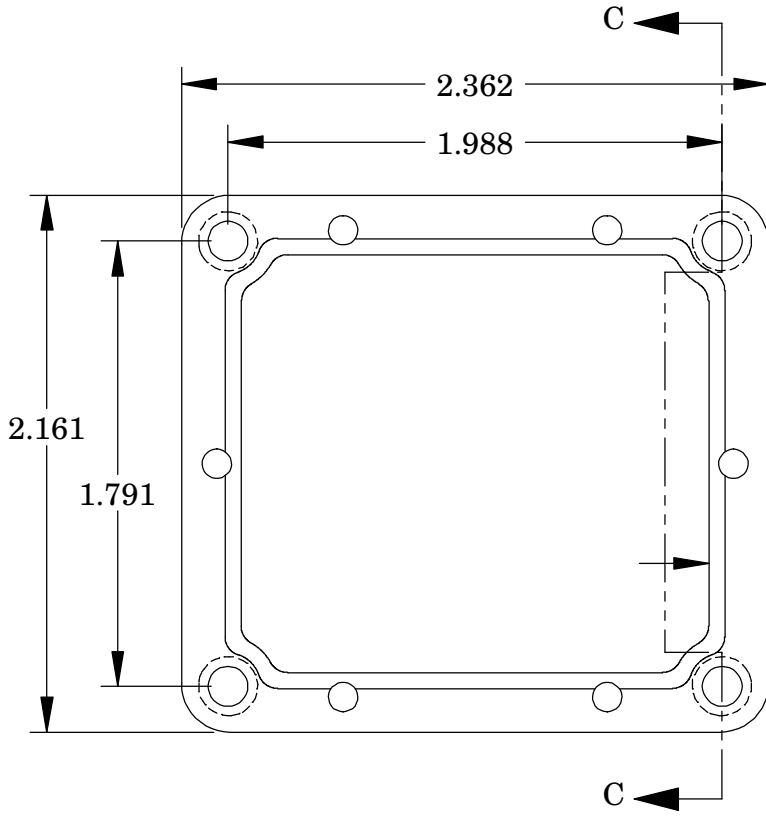
DETAIL D
SCALE 6 : 1



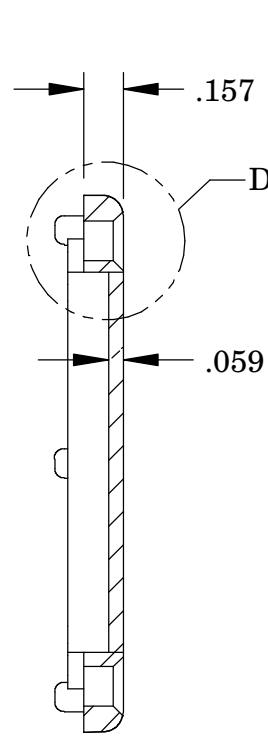
BODY



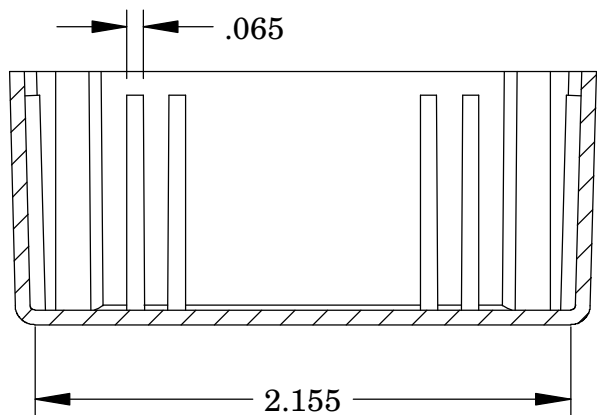
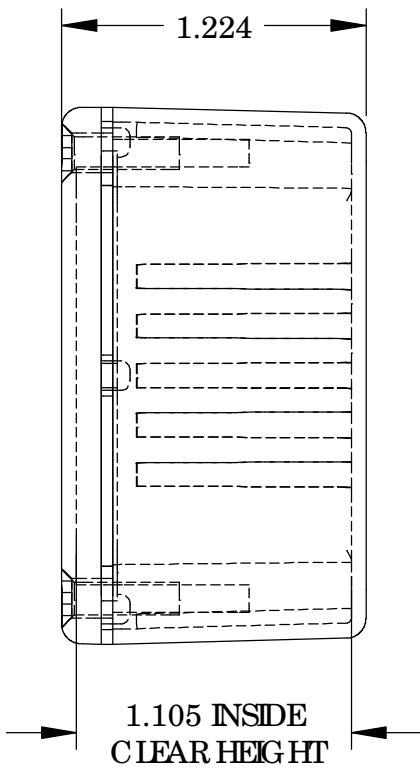
SECTION A-A



COVER



SECTION C-C



SECTION B-B

PARTS LIST				
+/- .005 BETWEEN HOLE CENTERS +/- .015 FROM SHEARED EDGE +/- .032 FROM A BENT SURFACE +/- .062 BETWEEN ASSEMBLED SURFACES UNLESS OTHERWISE SPECIFIED MATERIAL FINISH	CAD GENERATED DRAWING, DO NOT MANUALLY UPDATE		BUD INDUSTRIES INC.	
	APPROVALS	DATE	DIE CAST ALUMINUM ENCLOSURE	
	DRAWN DAB	3-31-06		
	CHECKED		SIZE C DWG. NO. CN-5700	
DO NOT SCALE DRAWING		APPROVED	SCALE	SHEET 1 OF 1

QTY.	USED ON