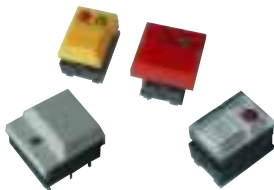


## SERIES KE

### Piano Key Type



## CHARACTERISTICS

- Classic Piano-Key design
- With or w/o LED
- Large and small Keys
- SPDT & SPST
- Multi-design features

## PACKAGING

**Qty/tray:** 100  
**Type of Packaging:** Tray

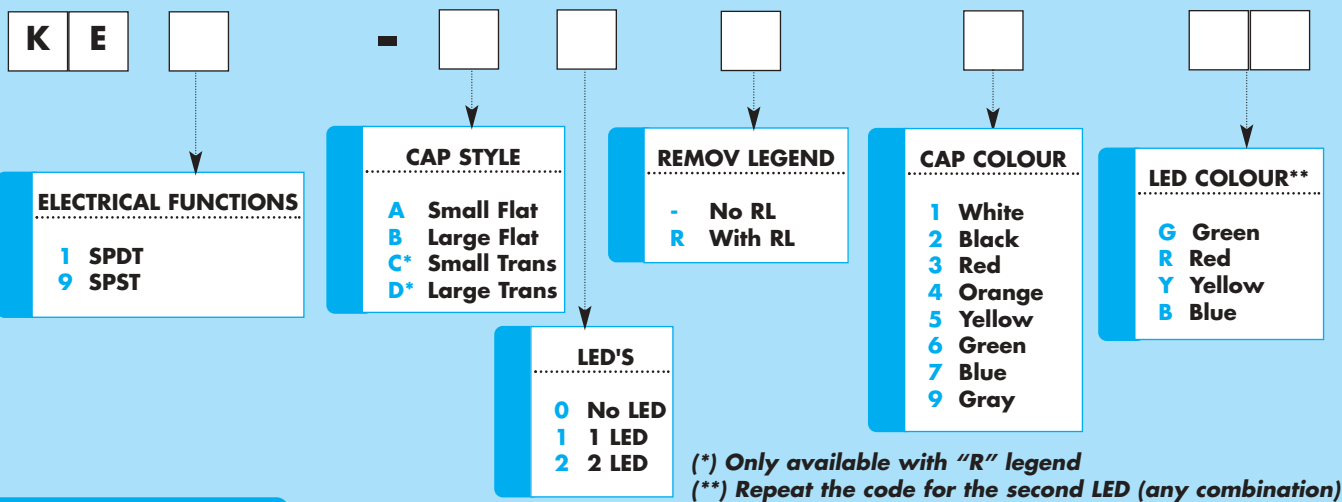
## SPECIFICATIONS

**Rating:** Switching 50 mA @ 12VDC max  
**Contact Resistance:** 50 mΩ max initial\*  
**Insulation Resistance:** 100 MΩ min @ 500V  
**Temperature:** Operating +10°C to +60°C  
**Operating Life:** 500.000 operations\*\*  
**Operating Force:** 170 ±50 gf  
**Soldering specifications:** 250°C for 5 secs

\* 100 mohm for SPST contact

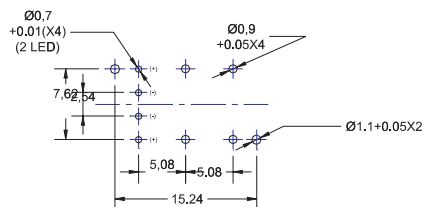
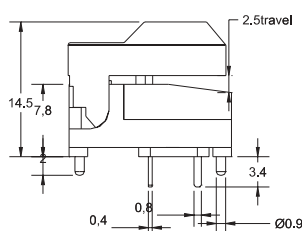
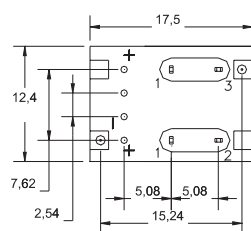
\*\*100.000 operations for SPST

## HOW TO ORDER

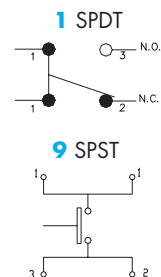


## DIMENSIONS

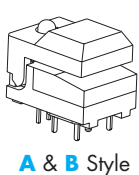
### 1 SPDT



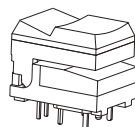
P.C.B. Layout



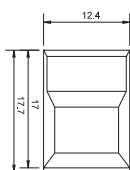
## CAP STYLES



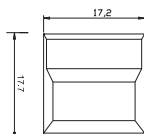
A & B Style



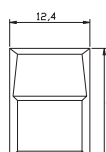
C & D Style



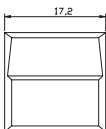
A Style



B Style



C Style



D Style

## Removable Legends

(under transparent overlay C & D type only)

