



DESCRIPTION

PT2366L is an audio power amplifier IC utilizing advanced CMOS technology. It can deliver 1W power output under 5V supply voltage. The power consumption is very low in stand-by mode.

Built-in over-temperature protection, package size is not occupies PCB space. It is suitable for small or portable products.

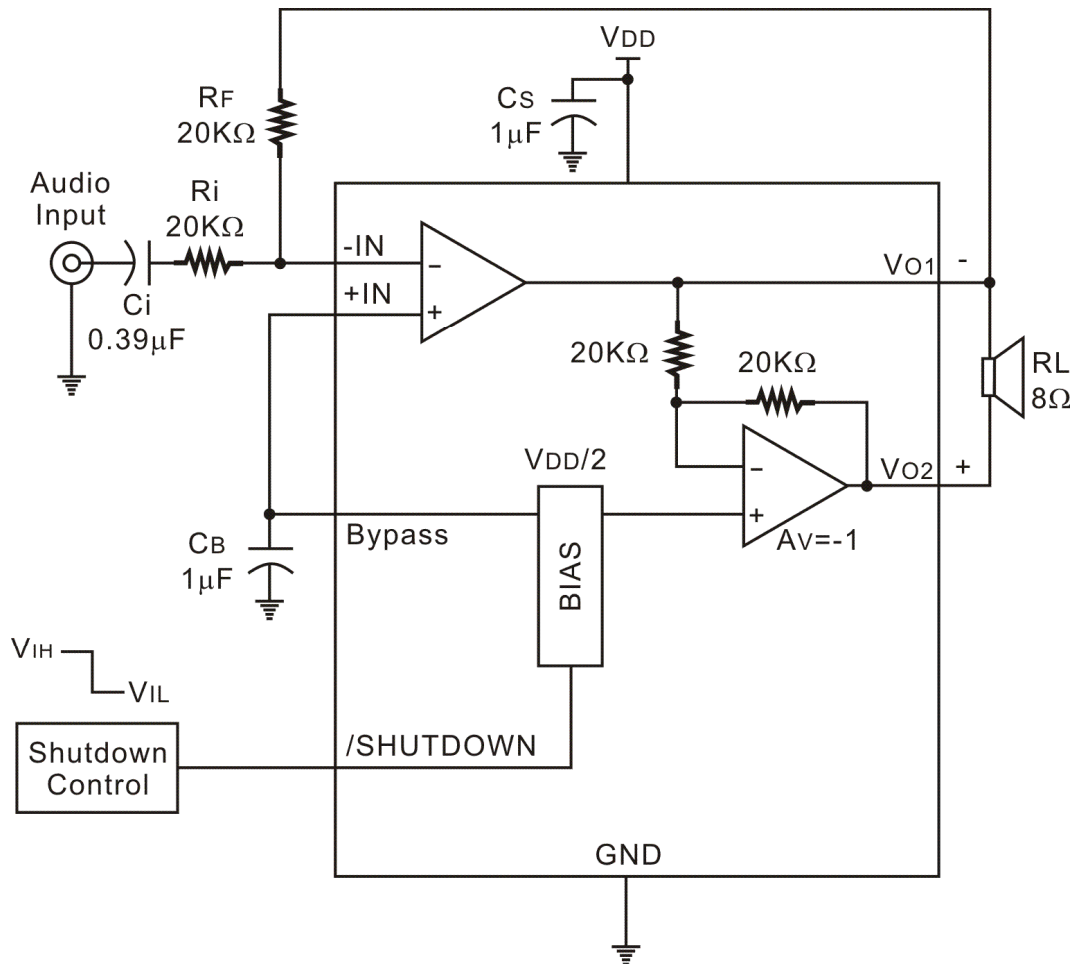
FEATURES

- CMOS technology
- Output power 1W (8Ω)
- Low harmonics distortion
- Built-in pop and click noise suppress
- Shutdown function, turn on can into save mode ($I_{cc} < 0.1\mu A$)
- Built-in over-temperature protection

APPLICATIONS

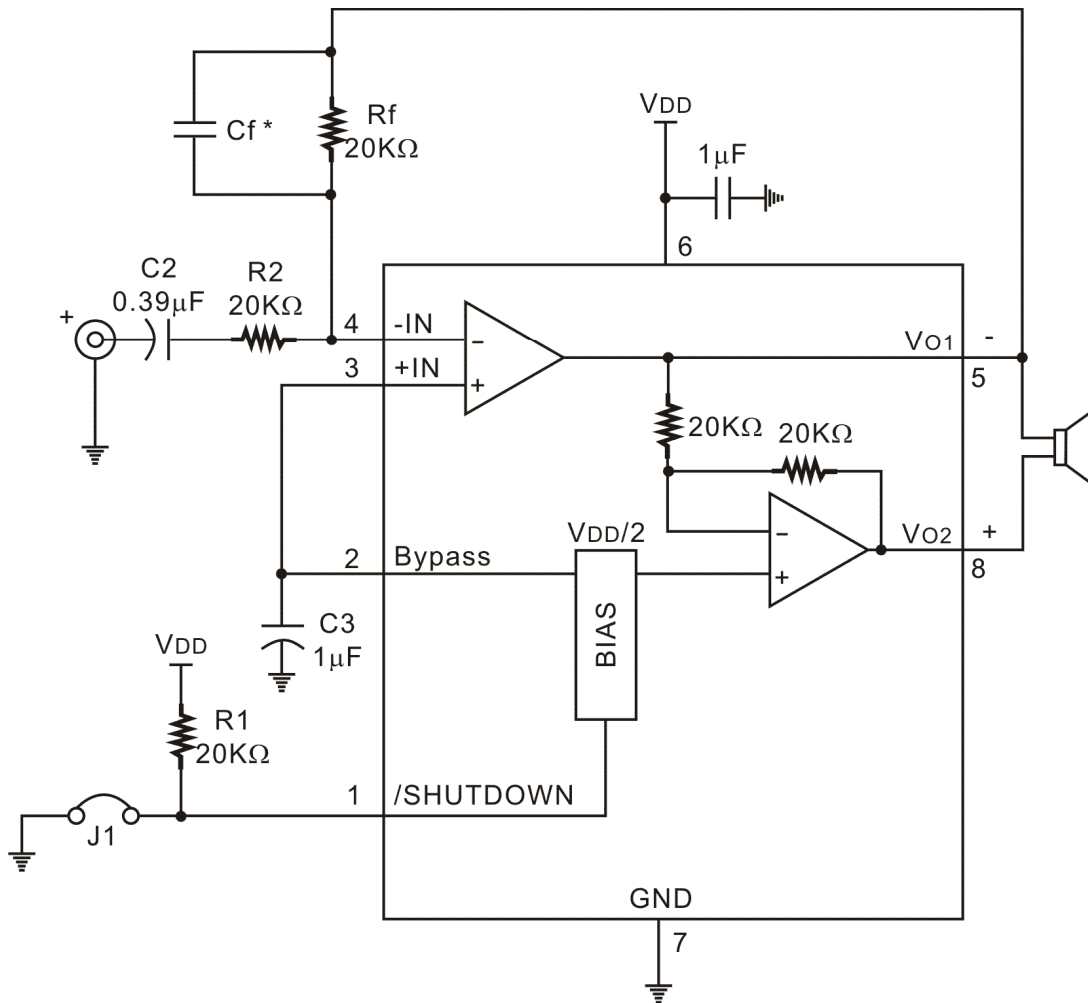
- DSC, PDA
- LCD TV or Monitor
- Electronic dictionary
- Multimedia speaker
- Other A/V applications

BLOCK DIAGRAM



APPLICATION CIRCUIT

SINGLE ENDED INPUT



Notes:

1. *=Not stuffed
2. Add a circuit (Cf) if needed, it can be a low filter to delete high frequency oscillation, but must to avoid incorrect Rf and Cf combination to cause "glide" before 20KHz. In general Rf=20KΩ, Cf=25pF, -3dB is 320KHz is recommended.

