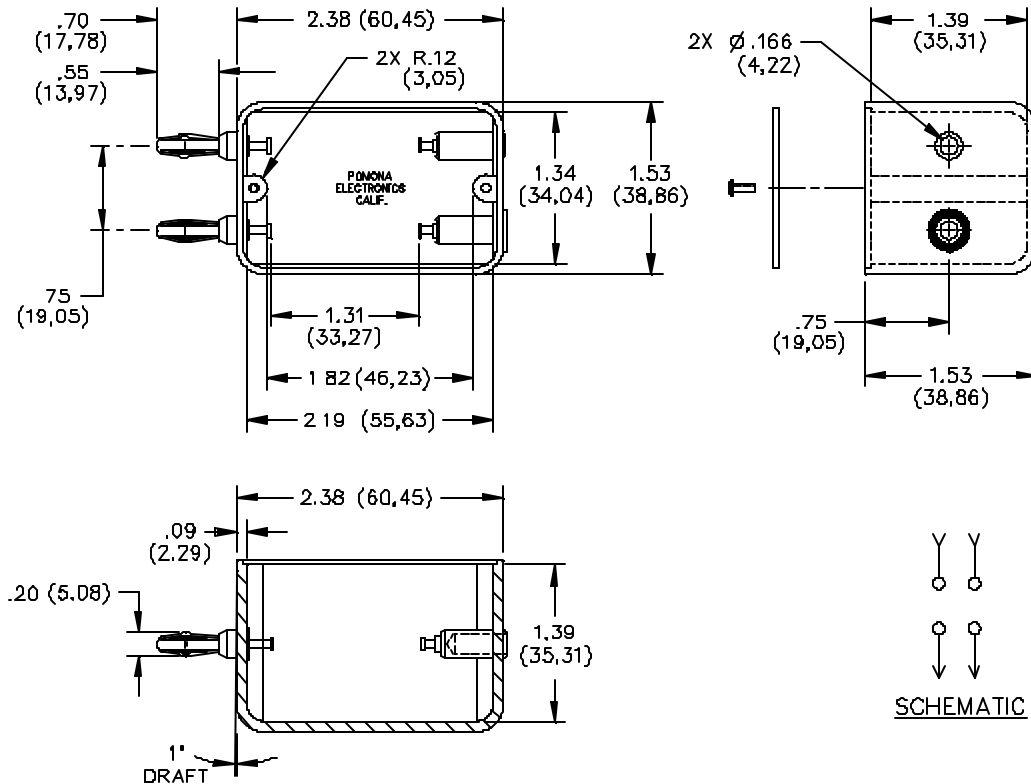


# Model 2224

## Phenolic Box Component Mounting

### Banana Jack To Double Plug

Operating Temperature: +150°C. (+302°F.) Max.



## MATERIALS:

## Banana Plug Springs: Beryllium Copper

Finish: Nickel plated

Polarity Marker: Color: Red

## Banana Plug Bodies, Solder Turret Terminals and

Banana Jacks: Brass, Alloy 360 1/2 Hard.

Finish: Bright tin plated

Molded Housing: Electrical grade phenolic. Color: Black

Marking: "MODEL 2224 POMONA  
ELECTRONICS CALIF."

Screws: 2 Ea.. #2-56 x (3/16") P. Head – Steel

Cover: Phenolic Plate. Color: Black

**ORDERING INFORMATION:** Model 2224

## RATINGS:

All dimensions are in inches. Tolerances (except noted): .xx =  $\pm .02$ " (.51 mm), .xxx =  $\pm .005$ " (.127 mm).

All specifications are to the latest revisions. Specifications are subject to change without notice.

Registered trademarks are the property of their respective companies. Made in USA