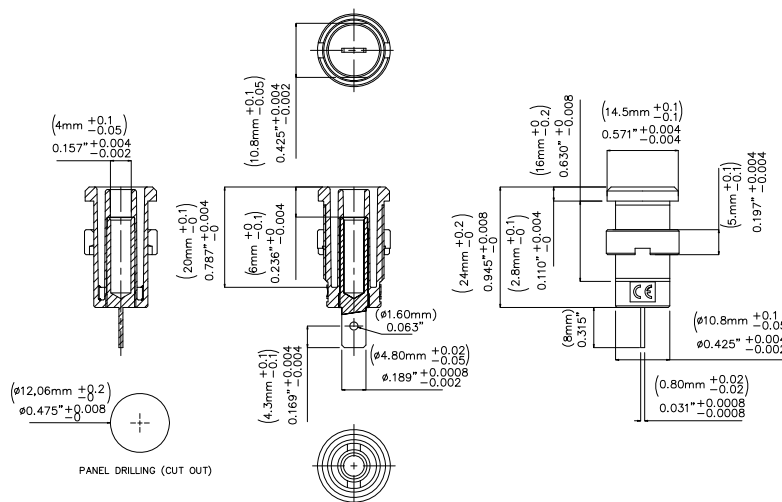


Model 72913

Panel Mt IEC61010 4mm (0.16in) Jack for Sheathed Banana Plugs



Model 72913
Panel Mount IEC61010 4mm (0.16in) Jack for
Sheathed Banana Plugs



Features

- Panel Mt. IEC61010 4mm (0.16in) Jack for Sheathed Banana Plugs.
- Solder Tab.

Materials

- Body: Polyamide
- Nut: Nickel-plated
- Solder Tab: Gold-plated Nickel Brass

Specifications

Max Current	36A
Max Voltage	1000 V CAT III
Max Resistance	Less than 5 mΩ

Ordering Information

Model: 72913-*

* = Color; Sold in packages of 10 pieces.
Available colors: Black (-0), Red (-2)