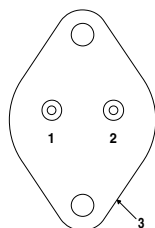
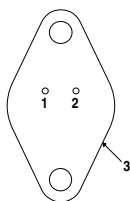


1.5 AMP NEGATIVE VOLTAGE REGULATOR



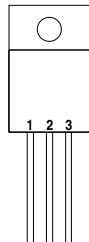
Pin 1 – Ground
Pin 2 – V_{OUT}
Case – V_{IN}

K Package – TO-3



Pin 1 – Ground
Pin 2 – V_{OUT}
Case – V_{IN}

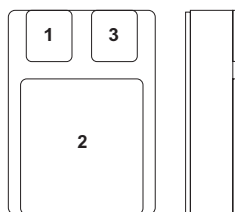
R Package – TO-66



Pin 1 – Ground
Pin 2 – V_{IN}
Pin 3 – V_{OUT}
Case – V_{IN}

G Package – TO-257
IG Package – TO-257*

* isolated Case on IG package



Pin 1 – Ground
Pin 2 – V_{IN}
Pin 3 – V_{OUT}

SMD Package – SMD1
Ceramic Surface Mount

FEATURES

- OUTPUT VOLTAGE OF -5V
- 0.7% / V LINE REGULATION AVAILABLE
- 0.5% / A LOAD REGULATION AVAILABLE
- THERMAL OVERLOAD PROTECTION
- SHORT CIRCUIT PROTECTION
- OUTPUT TRANSISTOR SOA PROTECTION
- 1% VOLTAGE TOLERANCE OPTION
(-A VERSIONS)

DESCRIPTION

The A suffix devices provide 0.7% / V line regulation, 0.5% / A load regulation and $\pm 1\%$ output voltage tolerance at room temperature.

Protection features include Safe Operating Area current limiting and thermal shutdown.

ABSOLUTE MAXIMUM RATINGS ($T_{case} = 25^{\circ}\text{C}$ unless otherwise stated)

V_I	DC Input Voltage	35V
P_D	Power Dissipation	Internally limited
T_j	Operating Junction Temperature Range	-55 to 150°C
T_{stg}	Storage Temperature	-65 to 150°C

Semelab Plc reserves the right to change test conditions, parameter limits and package dimensions without notice. Information furnished by Semelab is believed to be both accurate and reliable at the time of going to press. However Semelab assumes no responsibility for any errors or omissions discovered in its use. Semelab encourages customers to verify that datasheets are current before placing orders.

Parameter		Test Conditions		LM7905A LM120A-05			LM7905 , LM120-05 LM120-05			Units	
				Min.	Typ.	Max.	Min.	Typ.	Max.		
V _O	Output Voltage	I _O = 500mA	V _{IN} = -10V	-4.95	-5	-5.05	-4.9	-5	-5.1	V	
		I _O = 5mA to I _{MAX} P _D ≤ P _{MAX}	V _{IN} = -7.5V to -20V T _J = -55 to 150°C	-4.85		-5.15	-4.8		-5.2		
ΔV _O	Line Regulation	I _O = 0.5 I _{MAX}	V _{IN} = -7V to -25V		3	10		3	25	mV	
			V _{IN} = -7.5V to -20V T _J = -55 to 150°C		3	10		3	50		
		V _{IN} = -8V to -12V			1	4		1	25		
		I _O ≤ I _{MAX}	T _J = -55 to 150°C		1	12		2	50		
ΔV _O	Load Regulation	V _{IN} = -10V	I _O = 5mA to 1.5A		25	35		25	100	mV	
			I _O = 5mA to I _{MAX} T _J = -55 to 150°C		25	35		25	100		
I _Q	Quiescent Current	I _O ≤ 0.5 I _{MAX}			1	1.9		1	1.9	mA	
		V _{IN} = -10V	T _J = -55 to 150°C		1	2		1	2		
ΔI _Q	Quiescent Current Change	I _O = 5mA to I _{MAX}			0.2	0.4		0.2	0.4	mA	
		V _{IN} = -10V	T _J = -55 to 150°C		0.2	0.5		0.2	0.5		
V _N	Output Noise Voltage	f = 10Hz to 100kHz V _{IN} = -10V			100			100		μV	
$\frac{\Delta V_{IN}}{\Delta V_O}$	Ripple Rejection	f = 120Hz	I _O ≤ I _{MAX}	58				54			dB
		V _{IN} = -8V to -18V	I _O ≤ 0.5 I _{MAX} T _J = -55 to 150°C	58				54			
Dropout Voltage		I _O = I _{MAX}		1.4			1.4			V	
R _O	Output Resistance	f = 1 kHz		5			5			mΩ	
I _{sc}	Short Circuit Current	V _{IN} = -35V		0.6 1.2			0.6 1.2			A	
I _{pk}	Peak Output Current Average	V _{IN} = -10V		2.4 3.3			2.4 3.3				
Temperature Coefficient of V _O		I _O = 5mA		0.2			0.2			mV /°C	
Input Voltage required to maintain line regulation		I _O ≤ I _{MAX}		-7.3			-7.3			V	

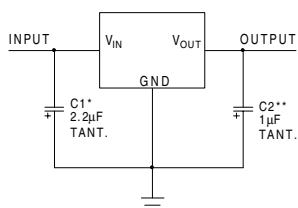
- 1) All characteristics are measured with a capacitor across the input of $0.22\mu\text{F}$ and a capacitor across the output of $0.1\mu\text{F}$.
 All characteristics except noise voltage and ripple rejection ratio are measured using pulse techniques ($t_p \leq 10\text{ms}$, $\delta \leq 5\%$). Output voltage changes due to changes in internal temperature must be taken into account separately.

- 2) Test Conditions unless otherwise stated: $P_{MAX} = 10\text{W}$ for SMD , $P_{MAX} = 20\text{W}$ for all other package devices

$$I_{MAX} = 1.0\text{A} , T_J = 25^\circ\text{C}$$

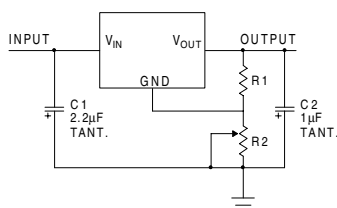
Semelab Plc reserves the right to change test conditions, parameter limits and package dimensions without notice. Information furnished by Semelab is believed to be both accurate and reliable at the time of going to press. However Semelab assumes no responsibility for any errors or omissions discovered in its use. Semelab encourages customers to verify that datasheets are current before placing orders.

APPLICATIONS INFORMATION



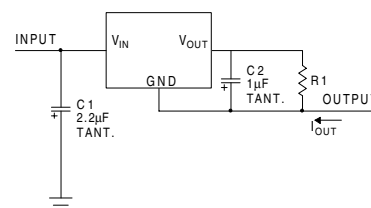
Fixed Output Regulator

- * Required if the regulator is located far from the power supply.
- ** Required for stability. 25µF electrolytic may be substituted.



Adjustable Output Regulator

$$V_{OUT} \approx V_{REG} \frac{(R1+R2)}{R1}$$



Current Regulator

$$I_{OUT} = \frac{V_{REG}}{R1} + I_Q$$

Order Information

Part Number	K-Pack (TO-3)	R-Pack (TO-66)	G/IG-Pack (TO-257)	SMD-Pack SMD1	Temp. Range	Note: To order, add the package identifier to the part number. eg. LM7905AK LM120SMD-05
LM7905A	✓	✓	✓	✓	-55 to +150°C	
LM7905	✓	✓	✓	✓	"	
LM120A-05	✓	✓	✓	✓	"	
LM120-05	✓	✓	✓	✓	"	