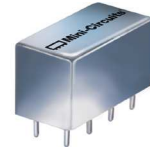


Plug-In Power Splitter/Combiner

PSCQ-2-400+

2 Way-90° 50Ω 250 to 400 MHz



CASE STYLE: A01
PRICE: \$29.20 ea. QTY. (1-9)

+RoHS Compliant

The +Suffix identifies RoHS Compliance. See our web site for RoHS Compliance methodologies and qualifications

Maximum Ratings

Operating Temperature	-55°C to 100°C
Storage Temperature	-55°C to 100°C
Power Input (as a splitter)	1W max.

Permanent damage may occur if any of these limits are exceeded.

Pin Connections

SUM PORT	1
PORT 1 (+90°)	2
PORT 2 (0°)	5
GROUND	3,4,7,8
CASE GROUND	3,4,7,8
50 OHM TERM EXTERNAL	6

Features

- wideband, 250 to 450 MHz
- low insertion loss, 0.5 dB typ.
- rugged shielded case

Applications

- modulators
- balanced amplifiers

Electrical Specifications

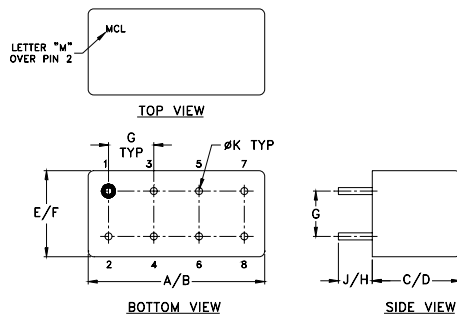
FREQ. RANGE (MHz)	ISOLATION (dB)	INSERTION LOSS (dB) Avg. of Coupled Outputs ABOVE 3 dB	PHASE UNBALANCE (Degrees)	AMPLITUDE UNBALANCE (dB)
f_L - f_U	Typ. Min.	Typ. Max.	Max.	Max.
250-400	23 16	0.5 0.9	4	1.5

Typical Performance Data

Frequency (MHz)	Total Loss ¹ (dB)		Amplitude Unbalance (dB)	Isolation (dB)	Phase Unbalance (deg.)	VSWR S	VSWR 1	VSWR 2
	S-1	S-2						
250.00	3.49	3.06	0.42	29.46	90.83	1.06	1.10	1.16
252.50	3.45	3.08	0.37	29.34	90.72	1.06	1.10	1.16
257.50	3.42	3.12	0.30	29.17	90.59	1.06	1.10	1.16
262.50	3.40	3.16	0.24	28.97	90.53	1.06	1.10	1.17
270.00	3.37	3.23	0.15	28.72	90.57	1.06	1.11	1.17
277.50	3.34	3.28	0.07	28.44	90.48	1.06	1.11	1.18
285.00	3.30	3.28	0.02	28.14	90.45	1.06	1.12	1.18
292.50	3.24	3.27	0.03	27.79	90.63	1.06	1.12	1.19
300.00	3.19	3.26	0.07	27.44	90.86	1.06	1.12	1.19
320.00	3.16	3.37	0.21	26.65	91.03	1.05	1.14	1.20
340.00	3.23	3.46	0.23	25.90	90.67	1.06	1.15	1.21
360.00	3.38	3.43	0.05	25.10	90.18	1.06	1.18	1.22
380.00	3.57	3.26	0.31	24.21	90.26	1.08	1.21	1.23
390.00	3.63	3.15	0.49	23.68	90.57	1.09	1.23	1.23
400.00	3.75	3.09	0.65	23.19	90.57	1.11	1.26	1.24

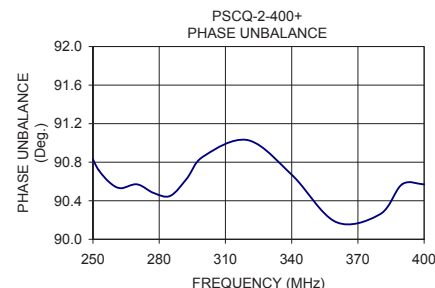
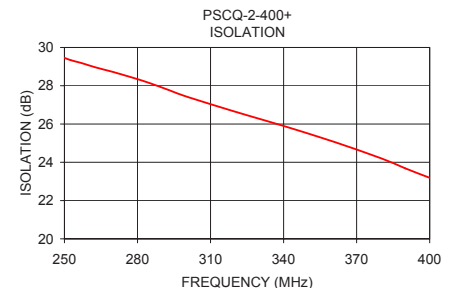
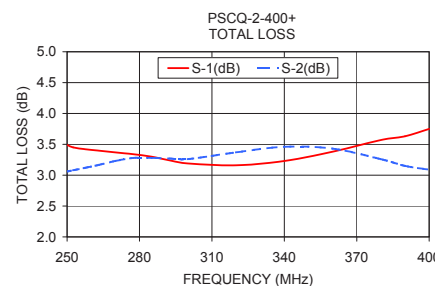
1. Total Loss = Insertion Loss + 3dB splitter loss.

Outline Drawing

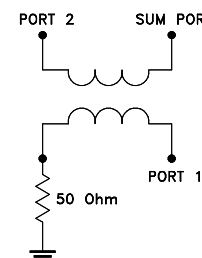


Outline Dimensions (inch/mm)

A	B	C	D	E	F
.770	.800	.385	.400	.370	.400
19.56	20.32	9.78	10.16	9.40	10.16
G	H	J	K	wt	
.200	.20	.14	.031	grams	
5.08	5.08	3.56	0.79	5.2	



electrical schematic



For detailed performance specs & shopping online see web site

Mini-Circuits®
ISO 9001 ISO 14001 AS 9100 CERTIFIED
IFIRF MICROWAVE COMPONENTS

P.O. Box 350166, Brooklyn, New York 11235-0003 (718) 934-4500 Fax (718) 332-4661 The Design Engineers Search Engine Provides ACTUAL Data Instantly at minicircuits.com

Notes: 1. Performance and quality attributes and conditions not expressly stated in this specification sheet are intended to be excluded and do not form a part of this specification sheet. 2. Electrical specifications and performance data contained herein are based on Mini-Circuit's applicable established test performance criteria and measurement instructions. 3. The parts covered by this specification sheet are subject to Mini-Circuits standard limited warranty and terms and conditions (collectively, "Standard Terms"); Purchasers of this part are entitled to the rights and benefits contained therein. For a full statement of the Standard Terms and the exclusive rights and remedies thereunder, please visit Mini-Circuits' website at www.minicircuits.com/MCLStore/terms.jsp.

REV. C
M131858
PSCQ-2-400
HY/TD/CP
130626