

Coaxial Power Splitter/Combiner

ZFSC-24-1

24 Way-0° 50Ω 0.2 to 100 MHz

Maximum Ratings

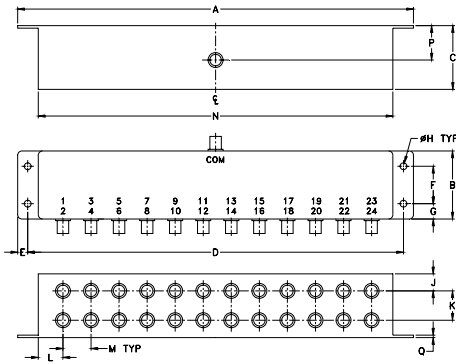
Operating Temperature	-55°C to 100°C
Storage Temperature	-55°C to 100°C
Power Input (as a splitter)	1W max.
Internal Dissipation	0.87W max.

Permanent damage may occur if any of these limits are exceeded.

Coaxial Connections

SUM PORT	S (COM)
PORT 1,2,3,4,.....,24	1,2,3,4,.....,24

Outline Drawing



Outline Dimensions (inch/mm)

A	B	C	D	E	F	G	H
9.31	1.60	1.50	8.84	.24	.88	.36	.160
236.47	40.64	38.10	224.54	6.10	22.35	9.14	4.06

J	K	L	M	N	P	Q	wt.
.40	.69	.54	.66	8.34	.81	.06	grams
10.16	17.53	13.72	16.76	211.84	20.57	1.52	490.0

Features

- good isolation, 25 dB typ.
- rugged shielded case

Applications

- HF/VHF
- test set-ups
- instrumentation



BNC version shown

CASE STYLE: R31

Connectors	Model	Price	Qty.
BNC	ZFSC-24-1	\$264.95	(1-9)
SMA	ZFSC-24-1-S	\$329.95	(1-9)

Electrical Specifications

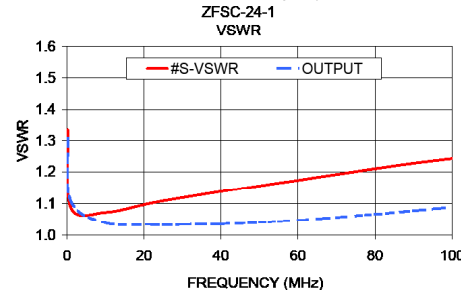
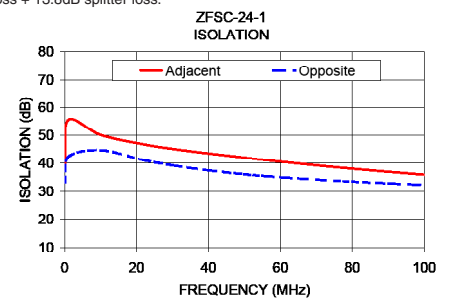
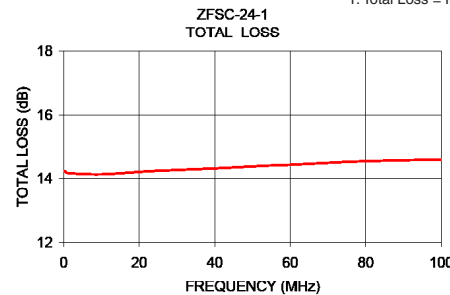
FREQ. RANGE (MHz)	ISOLATION (dB)		INSERTION LOSS (dB) ABOVE 13.8 dB		AMPLITUDE UNBALANCE (dB)		
	Typ.	Min.	Typ.	Max.	L	M	U
0.2-100	25	20	1.0	2.0	0.6	0.4	0.5

L = low range [f_L to $10 f_L$] M = mid range [$10 f_L$ to $f_U/2$] U = upper range [$f_U/2$ to f_U]

Typical Performance Data

Freq. (MHz)	Total Loss ¹ (dB)	Amplitude Unbalance (dB)	Isolation (dB)		VSWR S	VSWR OUTPUT
			Adjacent	Opposite		
			S-1			
0.20	14.24	0.04	39.41	33.21	1.33	1.31
1.00	14.17	0.02	55.54	42.27	1.09	1.11
10.00	14.13	0.02	50.08	44.68	1.07	1.04
22.00	14.22	0.01	46.72	41.12	1.10	1.03
30.00	14.26	0.02	45.13	39.29	1.12	1.03
40.00	14.31	0.02	43.49	37.48	1.14	1.04
50.00	14.37	0.03	42.03	36.11	1.16	1.04
55.00	14.40	0.03	41.27	35.55	1.16	1.04
60.00	14.42	0.04	40.59	35.07	1.17	1.05
65.00	14.45	0.04	39.94	34.61	1.18	1.05
70.00	14.48	0.04	39.30	34.22	1.19	1.06
75.00	14.51	0.05	38.67	33.85	1.20	1.06
80.00	14.53	0.05	38.09	33.49	1.21	1.07
90.00	14.56	0.06	36.99	32.88	1.23	1.08
100.00	14.58	0.07	35.94	32.31	1.24	1.09

1. Total Loss = Insertion Loss + 13.8dB splitter loss.



electrical schematic



Mini-Circuits®
ISO 9001 ISO 14001 AS 9100 CERTIFIED

P.O. Box 350166, Brooklyn, New York 11235-0003 (718) 934-4500 Fax (718) 332-4661 The Design Engineers Search Engine Provides ACTUAL Data Instantly at minicircuits.com

IF/RF MICROWAVE COMPONENTS

For detailed performance specs & shopping online see web site

Notes: 1. Performance and quality attributes and conditions not expressly stated in this specification sheet are intended to be excluded and do not form a part of this specification sheet. 2. Electrical specifications and performance data contained herein are based on Mini-Circuit's applicable established test performance criteria and measurement instructions. 3. The parts covered by this specification sheet are subject to Mini-Circuits standard limited warranty and terms and conditions (collectively, "Standard Terms"); Purchasers of this part are entitled to the rights and benefits contained therein. For a full statement of the Standard Terms and the exclusive rights and remedies thereunder, please visit Mini-Circuits' website at www.minicircuits.com/MCLStore/terms.jsp.

REV. A
M127604
ZFSC-24-1
HY/TD/CP/AM
100602